

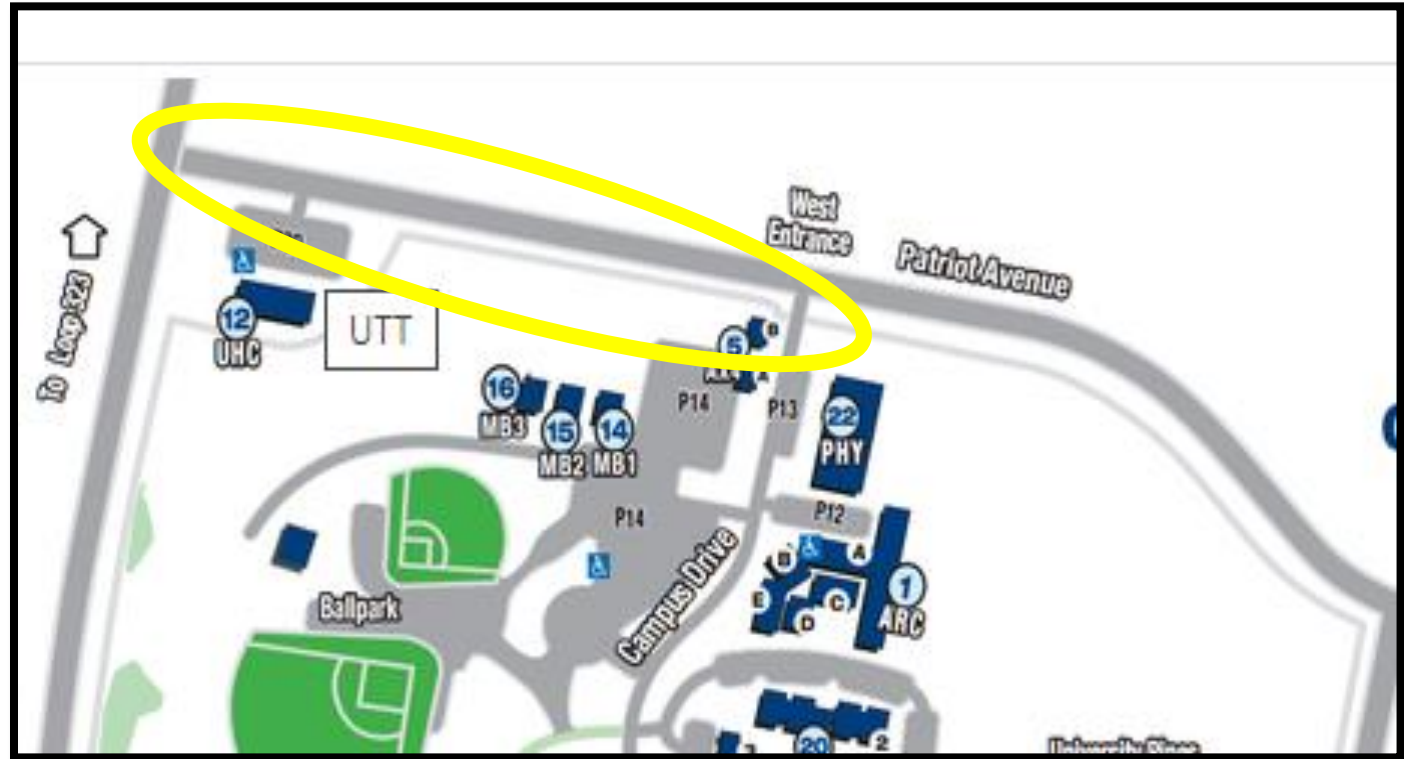


Pavement Study

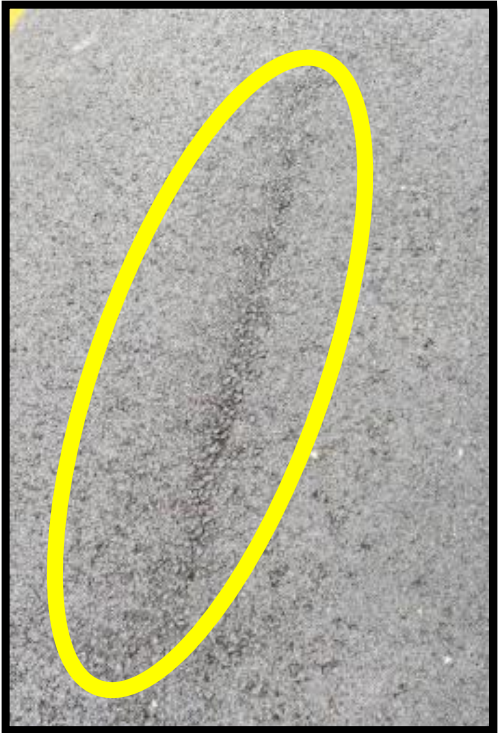
SHAYLA MENDIOLA

Introduction

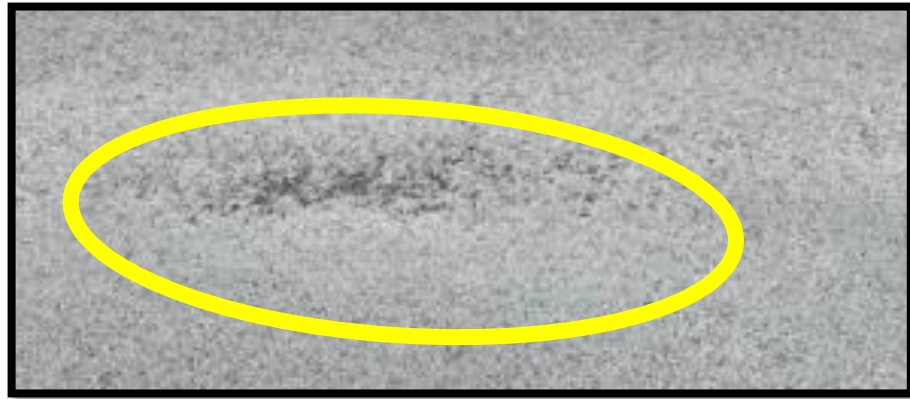
- Do a pavement study
- Identify the level of severity of distresses in the pavement
- Calculate the PCI (Pavement Condition Index)
- Rehabilitation Recommendations



Images



Raveling



Raveling

Cause of raveling in asphalt is due to the separation of aggregate and asphalt cause by weather



Raveling

Conclusion

- ▶ The main distress in this section of the road is raveling the way to fix it is by applying sealcoat since the severity of the distress is at low and early.
- ▶ PCI number for this section of the road is at 92 the condition is good



References

- ▶ <https://copavementsolutions.com/asphalt-raveling>
- ▶ **ASTM D6433**