

University of Texas at Tyler

Scholar Works at UT Tyler

The UT Tyler Patriot

Student Newspapers

5-2-1984

UT Tyler Patriot Vol. 11 no. 14

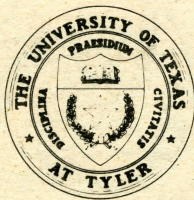
University of Texas at Tyler

Follow this and additional works at: <https://scholarworks.uttyler.edu/uttylerpatriot>

Recommended Citation

University of Texas at Tyler, "UT Tyler Patriot Vol. 11 no. 14" (1984). *The UT Tyler Patriot*. 46.
<https://scholarworks.uttyler.edu/uttylerpatriot/46>

This Book is brought to you for free and open access by the Student Newspapers at Scholar Works at UT Tyler. It has been accepted for inclusion in The UT Tyler Patriot by an authorized administrator of Scholar Works at UT Tyler. For more information, please contact tgullings@uttyler.edu.



Graphic artist moves into fine arts

By Nita Shirley

Have you ever thought about dropping out of college to pursue your dream? I'm sure many of us, at one time or another, have at least thought about it. You tell yourself that you'll come back and finish in a year or two, but many of us never make it back.

The thoughts that run in our mind like "It's too much of a transition for me" or "I won't be able to cut it anymore" seem to make our decision for us. But then what about those individuals that did make it back? What motivated them to make the change?

For one such person, it was the fact that he was in the right place, and it was the right time. Thirty-seven-year-old Lannie Spurgers has made that transition after being out of college for 14 years.

In the beginning, he was working for a degree in the commercial arts area and also working as a commercial artist. While he never finished that degree, he is on his way to a degree in Fine Arts at UT Tyler.

Spurgers said that he had quit college before because he was "...having trouble keeping interested. I felt that I was learning more at work than at school."

Although Spurgers is a very successful commercial artist, he feels that "...it has kept me from developing the fine arts."

Now he is able to spend more

time with his first love of Western art. "As a kid, I grew up in West Texas where the Comanches were," he says.

FALL SCHEDULE INSIDE

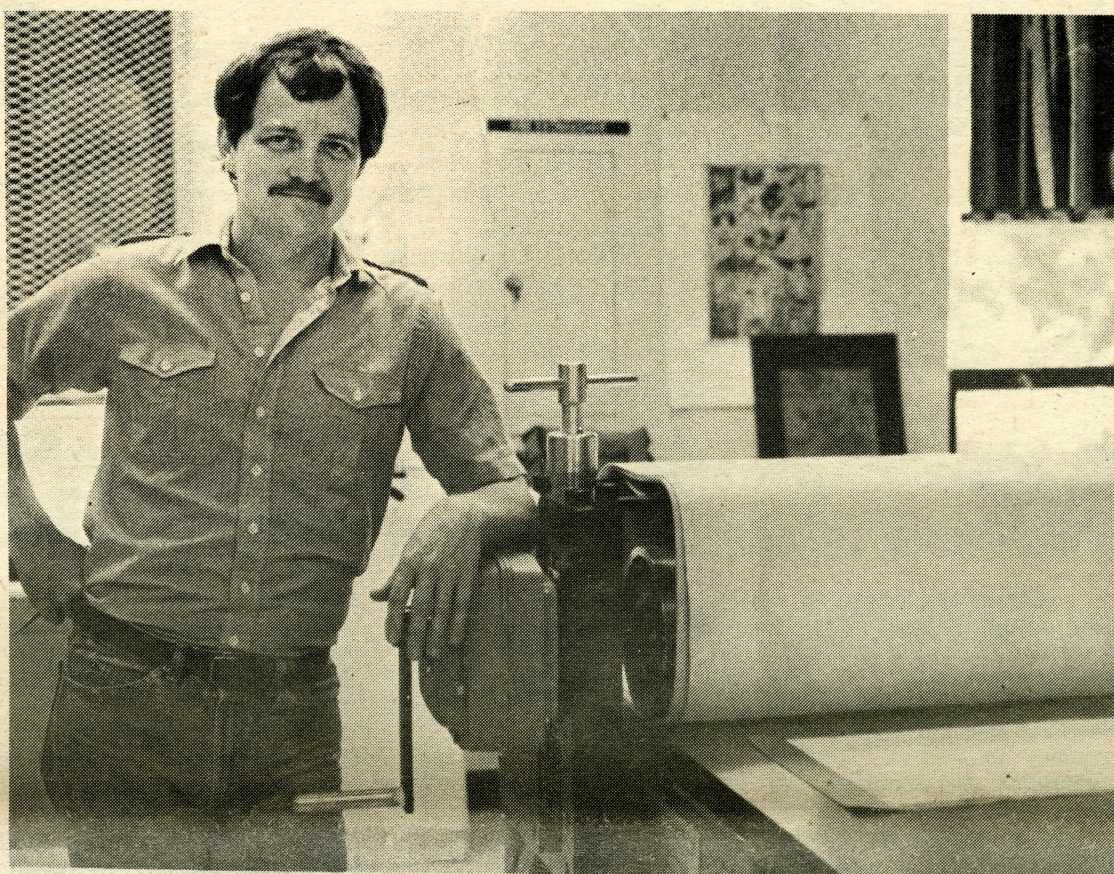
Spurgers first career choice, he said, would have been a journalism artist when they had to draw the pictures, particularly the Indian artwork, when there were no cameras. "I feel I was born 100 years too late," he says.

His love of Western art is reflected in his home as most of it is decorated in the time era he prefers such as the tool implements they used, old photographs and old documents.

Spurgers' primary project right now is finishing his house that he has built himself. He lives in the country and loves it. His studio is also in his house. It consumes a large part and the interior is made out of old barnwood. Spurgers also makes his own picture frames. Since most of his paintings reflect the West, he believes that his frames help enhance the mood of the picture.

His partner is his ex-wife, Carolyn, whom he was married to for nine years. She was responsible for bringing Spurgers to Tyler because her family is from here. His only worry was if he would be able to make a living here, but soon he found that it was no problem at all.

Some of his work in the East Texas area has been doing graphics for Carrier Air Conditioning and Trane Air Condition-



ARTIST ENJOYS WORK—Lannie Spurgers, senior art major, shows satisfaction with an etching (artwork done on a zinc plate and etched in acid). [Photo by Ken Bryson]

ing. Most of the area schools have also had the Spurgers touch. The Tyler Independent School District has also had Spurgers do the graphics for its administration building.

He finds school and institution graphics "...more rewarding than doing fine arts. I like painting for the masses, not just a select few."

Spurgers sees his graphics as "...a planned effort to enhance

the employer's environment. I try to relate it to their work and make it more pleasant to spend eight hours a day in." Doing this, he says, helps relieve the guilt he feels for being able to do exactly what he wants, when he wants to do it, and be able to make a living.

Coming back to school was a slight change, though. Spurgers decided to become a fine arts artist. "There are a lot of mediums

I haven't tried, and I wanted the association and atmosphere of being around other artists," he said. "But my work is still too tight. It's not loose enough." He says he doesn't feel that he's made the transition yet. "I'm not where I want to be at all. I've still got a long way to go," he says.

Don Van Horn, associate professor of art, says that he knows the struggle Spurgers has gone through with the change from commercial to fine art. "From a fine arts aspect, necessity has to be more abstract. I think he has some difficulty with focusing in on that thought process," says Van Horn. "But as time goes on, the evolution of the mental process will grow to meet his technical expertise."

Spurgers political cartoons for the university newspaper has recently earned the "UT Tyler Patriot" 1st place honors in Division 2 Newspaper Cartoon at the 75th Texas Intercollegiate Press Association. Adviser to the student newspaper, John Robinson, adds his respect for Spurgers, "In my opinion, Lannie is one of the most gifted talents in East Texas."

Spurgers says that even though UT Tyler's art department is small in numbers, there are many diverse types of artwork. "It's not just classroom instruction," he adds. "I feel that I've been very fortunate to not only study under Bill Stephens and Van Horn, but also under A.C. Gentry and Ansel Nunn, [who are successful artists and guest lecturers at the university.] You're able to pick their brain and learn

(Continued on page 9)

Correction

On page 3 of the April 8 edition, the "Patriot" staff ran a picture captioned "The Stars of Texas."

The photo featured the three flagpoles outside the Administration Building.

Commonly, the university flies a U.S. flag and two Texas flags. On this occasion one Texas flag was replaced with a French na-

This is the final edition of the Patriot for the spring 1984 semester. There will not be a paper published during the summer sessions. Regular publication will resume in the fall 1984 semester.

tional flag banner. This was to honor our guests from Metz, France.

A few corrections were offered by our readers, and one observer wrote, "I read this outline with great interest and concern."

"We are flying only one Texas flag. Does that mean we are half staffed?"

Our congratulations for solving our visual riddle. Look closely, our errors are not always unintentional.

447 candidates to receive diplomas at commencement

The graduation ceremony for fall 1983 and spring 1984 candidates is set for 7:30 p.m. Friday, May 11 at Harvey Hall.

The 447 candidates compose the largest class in the university's history, according to Archie Whitfield, public information director.

The Alumni Association is hosting a reception honoring the graduation candidates from 6-7:15 p.m. in the Garden Center Building.

The commencement speaker will be Evan G. Galbraith, the U.S. Ambassador to France. He was sworn in as ambassador in November 1981.

Galbraith holds a bachelor's degree from Yale and is a graduate of Harvard Law School. He is a member of the bar of the State of New York and the

District of Columbia.

Following a three-year tour of duty in the U.S. Navy, Galbraith practiced law in New York until joining the staff of the Secretary of Commerce as his special assistant from 1960-61.

He has pursued an international banking career for the past 20 years. He was with the Morgan Guaranty Trust of New York from 1961-69. He served as assistant vice-president of the International Finance Division in New York from 1961-63 and as director of Morgan and Cie in Paris from 1963-69. He concurrently served as vice-president of Morgan Guaranty Trust from 1968-69.

He served as managing director and chairman of Bankers Trust International in London

from 1969-75. From that time until 1980, he was chairman of Dillon Read Overseas Corporation at London and director of Dillon Read and Company at New York from 1980 until his ambassador nomination.

Galbraith also served as director of Menasha Corporation of Neenah, Wis.

He is co-author of "The German Stock Corporation Law" which was first published in 1968. He was a director of the "National Review" from 1957 until his appointment as ambassador.

Jon Newton, chairman of The University of Texas System Board of Regents, will be present for the conferring of degrees to the graduation candidates.

Alumni Association President Robert Turner will present the Distinguished Student Award.

Editorial

Let 'The Sage' talk of political choices

By Glynn Beaty

The primaries had been going on, it seemed, for the last twenty years. Ronnie had been president for even longer. The television was telling me to vote for candidate "A" because he was bigger, better; vote for Candidate "B" because he was an old family friend; vote for Candidate "C" because he was. . . and so on and so on and so on. By now, I was thoroughly confused. I needed help. I sought out. . . the Sage.

The Sage had recently moved from his cave in town to a new one just south of here. I had to hunt, which wasn't unusual, but I didn't find him. He greeted me, asked about the family, then sat quietly, waiting for me to pour out my soul to him. He didn't have to wait long.

"Oh, Sage," I moaned. "I'm so confused. I want to elect a president for the 80s, who will have enough vision for the country to take it into the 90s and, hopefully, the next century. Each candidate says he's the one. Help

(Continued on page 9)

Student expresses concern for future of electoral system

By Janet Price

More than feeling tricked by pollsters and professional political advertisers, I am concerned for the future of the American electoral system. Real freedom to find a personal preference in candidates is limited more with each election.

From the local to the national level, the voter is constantly psychologically molded. I wonder if the average voter is politically mature enough to fight back.

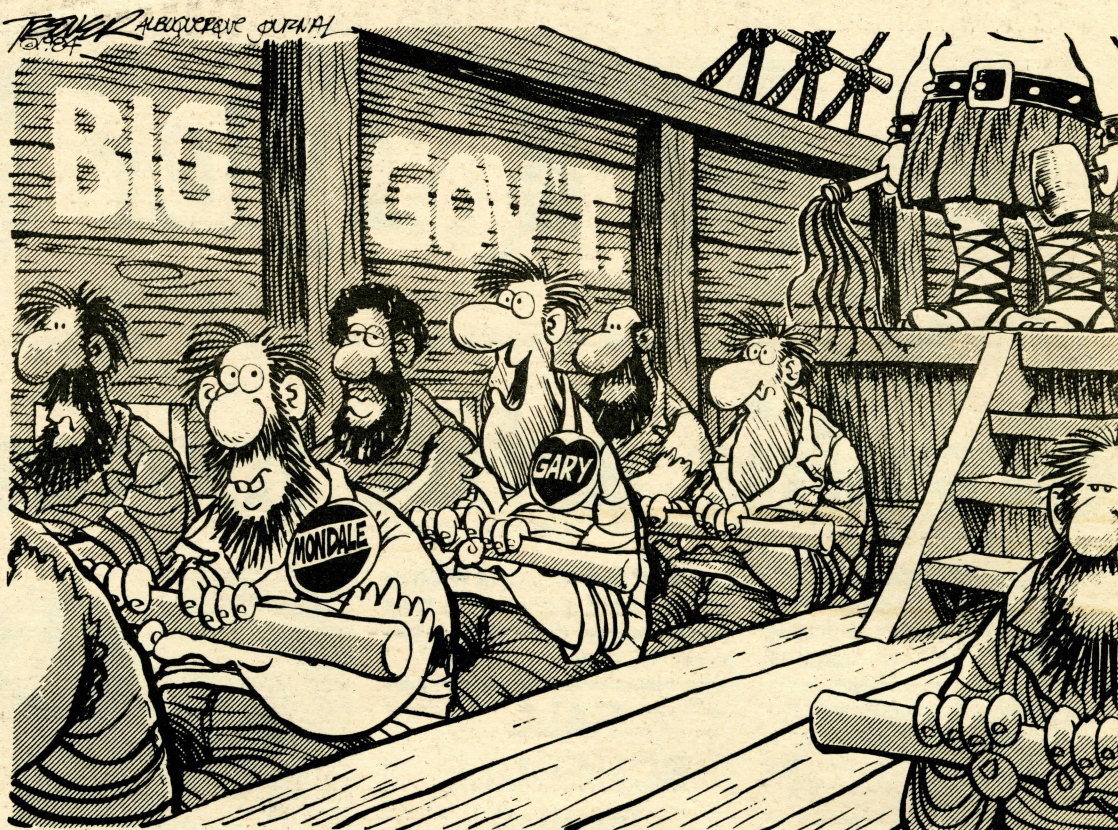
By coincidence, I viewed a film recently on media selling of political candidates. CBS reporter Mike Wallace interviewed agency executives specializing in political advertising. All assured Wallace that their daytime chicanery did not stop them from sleeping at night. It

was their job. But one man went further, "I know politics. I can get a candidate elected and then my duty ends. After that it's government and I know nothing about government."

I will agree that more Americans have more information on more candidates now than before the use of radio and TV. However, since the extensive use of these media in 1948, the public has been promised, assured, cajoled and increasingly misled.

These men are advised not to tout their many previous accomplishments for fear their failures will also show.

What has happened to this human element? Is the voting public so judgmental that the candidates must seem omniscient?



"YEAH, BUT HART WILL STEER A NEW DIRECTION!"

CPS

Letters

Dear Editor:

In regard to the editorial "Poor voter turn-out shows dissatisfaction," printed in the April 18 issue of the "Patriot":

As a student leader I agree with the statement "our student leaders should have constant contact with us (the students)." I have investigated how other UT system universities work toward accomplishing this goal. Their student newspapers send reporters to their student government meetings and print articles in the following issue of their school newspaper.

By reading these articles, students are given the chance to see how their respective student governments are representing them and what they are doing. Through student feedback generated by these articles, student governments become more accountable for their actions and more effective toward fulfilling students' needs and wants.

I enjoy reading the "Patriot." It contains excellent articles on national, state, city and faculty developments and politics. I believe the "Patriot" can report equally as well the local developments in UT Tyler student government. All Student Association meetings are open to the public and we encourage "all" students to attend.

Sincerely yours
David Krape
Vice president
Student Association

Editor's note: In response to the above letter let it be noted that the Student Association has the responsibility to inform the "Patriot" of their meeting times, dates and places, both regular and called meetings. "Patriot" reporters are both willing and able to attend the meetings if they are contacted in advance. We want a cooperative spirit to exist between all organizations on campus but particularly between the "Patriot" and the other organizations. Cooperation is

the key to all success.

Dear Editor:

In the April 18, 1984, issue of the UT Tyler Patriot, political science major and journalism minor student Cosmos Ekwunife published an article titled "Poor Voter Turn-out Shows Dissatisfaction" which must not pass without commentary because the article casts a slur on the integrity of the out-going officers of the UT Tyler Student Association.

The article raised three points which need elucidation—voters turn-out, Student Association budget and accountability.

He blamed the organizers of the elections for not making "candidates more known to the students" and suggested that there be a forum where the students could listen to the candidates speak and state their reasons for running for a particular office.

While he has the right to express his opinion, I do want to point out that it is unfortunate to blame the organizers for what he calls "poor voter turn-out."

UT Tyler does not hold elections in a political jungle. The university has an election code which must be followed. The code specifies the duties of the Rules Committee of which I am the chairperson; the requirements for candidates running for elections; and campaign procedures.

Our duties as organizers of the election was to announce voting dates, which we did a week before the election with an appeal to students to vote on election days, ensure that candidates were qualified to run for office, serve as election judges, provide adequate polling area, and make sure no candidate in the election served on the Rules Committee or was involved in any way in the election process. We obeyed these rules.

The election code also outlines duties which include furnishing official ballots, providing voting boxes, presiding over candidates meeting a week prior to election, enforcing all rules governing

campus elections, providing adequate persons to man the polling booths, having the results of the election posted within twenty-four hours after the polls have closed, and retaining the ballots for two weeks after the election.

Members of the Rules Committee worked assiduously to meet all these obligations such that we had a smooth and clean election.

It could be true that some "students who wanted to vote did not because they did not know who the candidates were." But to blame the organizers for not making "candidates more known to students" is an unfortunate reaction because the election

(Continued on page 3)

UT Tyler Patriot

The UT Tyler Patriot is published at two-week intervals on Wednesdays during the fall and spring semesters, except during examination and vacation periods. Most of the production work is done by journalism students. Opinions expressed are those of student editors and do not necessarily reflect those of the student body, faculty or administration. The staff welcomes contributions from students, faculty and staff.

EDITOR
James Bynum

MANAGING EDITOR
Melanie Stracener

ADVERTISING MANAGER
Nita Shirley

PHOTO EDITOR
Ken Bryson

STAFF: Pam Kirby, Diane Davis, Jannabeth McComb, Angie Patterson, John Berry, Debora Pennington, Pat Record, Dian Windham, John Blake, Andrea Jarrell, Larry Philen, Charles Wilson, Tonsi Miller, Debbie Garrett, Clifton Henry, Janet Price.

ADVERTISING STAFF: Maury Hudson, Ida Clemons, Deniz Tugwell, Debra Abuhl.

FACULTY ADVISER
John Robinson

GRADUATE ASSISTANT
Terry Shirley

The UT Tyler Patriot's offices are located in the Hudnall-Pirtle-Roosth Building, Room 261, telephone (214) 566-1471, ext. 249. Send mail to 3900 University Boulevard, Tyler, Texas 75701.

The UT Tyler Patriot subscribes to reprints materials from the Campus Dig. News Service (CDN) and College Press Service (CPS).

U.S. postage paid. Permit No. 963, Tyler, Texas, 75701.



The Right Side

By John Blake

In light of this week's frightening report from the authoritative "Jane's Defense Weekly" about Iran being just two years away from producing The Bomb, and Moammar Khadafy's directive to machine-gun people outside Libya's embassy in London, it would be appropriate to focus upon the growing threat of terrorism.

Who is the primary target of terrorism in the world? Statistics kept by the CIA show that for over 8,000 attacks since 1968, nearly half were against U.S. citizens and property. Most of the other incidents were directed at governments allied with the United States. Not surprisingly, the countries where acts of terrorism were virtually nonexistent are Communist regimes such as the Soviet Union and Cuba, who are being increasingly linked to the international terrorist movement.

With events such as the World's Fair in New Orleans,

(Continued on page 19)

SA chairman replies to editorial

(Continued from page 2)

code does not allow the Rules Committee to campaign for candidates in order to make them "more known." It is always the responsibility of the candidates to campaign for themselves.

The election code gives candidates two days to campaign. If they failed to make themselves known to the students, is there any justification to blame it on the organizers? Could the Rules Committee campaign for candidates and remain fair with the election results? Could our special interests not subvert the democratic process? The idea of a forum is a good one but not permissible by the election code. The issue will be looked into in the future.

To call the voter turn-out "poor" is an understatement. The national average for college and university voter turn-out is approximately 20 percent. If UT Tyler scored an average of 11 percent with education majors who form about 25 percent of the university's registered voters out on internship, should the turn-out be termed "poor?"

For the writer to assess that 'poor voter turn-out shows dissatisfaction,' is a careless and baseless assumption which must quickly be dismissed with impunity. There were students who voted even though they did not

any candidate's name"—instead, they read the campaign statements by candidates which were put on notice boards at the various voting booths and made their choice upon the strength of such statements.

I am more inclined to believe that there were better reasons why some students did not vote than mere "dissatisfaction" by students on the election.

He writes about the Association's Budget as if officers of the Student Association are a bunch of irresponsible kids given \$30,000 to go on a shopping spree. In the first place, the Student Association Budget for 1983-84 was \$28,425 and not \$30,000.

Total appropriation is divided into four categories: maintenance and operations, equipment, travel, and student activities. Half of the appropriation (\$14,075) went into student activities which covered fees for guest speakers, film shows, social activities, annual picnic and miscellaneous activities. An amount of \$6,850 was spent on academic travels by students, Texas Student Association conventions and meetings. There was a contingency fund of \$1,500 for student activities equipment, and \$6,000 to cover maintenance and operation.

No officer of the association handles any money or checks. If they do, the amount is always less than \$50 and for emergency purposes only. Nothing is spent without majority votes or the approval of the Dean of Student Activities. As a result, there has never been any misappropriation in the annals of the Association.

Accountability? Sure. The records of the Association are open for inspection by anyone who cares. The outgoing officers of the Association are men and women of integrity and responsibility. They are graduates and graduating seniors from various disciplines who are gainfully

employed. Some handle budgets and cash for companies which far exceed the meager "\$30,000."

They are men and women who gave service to the university even though the opportunity cost was greater. They served in order to make the university a better place to study and to leave footprints in the sands of time for future generations of the university. They did not ask what the university could do for them, but what they could do for the university. If hats cannot be doffed for their sacrifice, let no one stab them in their backs.

Jackson Yenn-Batah
Chairman, Rules Committee
UT Tyler Student Association

Forum held April 26-27

By Maury Hudson

The second Candidate Forum, sponsored by the Texas Association of College Teachers and the UT Tyler Student Association was held April 26 on the UT Tyler campus.

According to Dr. Jeanie Stanley, associate professor of political science and the TACT legislative liaison, those attending were Republican Tom Blow, Democrat David Hudson, Democrat Tom Barron and Republican Daniel Dinger.

The first primary election will be held Saturday, May 5 with several candidates running for various offices.

Polls will be open from 7 a.m. until 7 p.m.



HONEST EMPLOYEES FIND MONEY—Linda Daily and Dradell Davis, employees of the University Center snack bar, discovered more than \$1,000 while clearing off tables in the UC. It turned out that the money was lost by an evening student. Daily and Davis turned the money, cash and a check, over to university police. The police report showed \$281 in cash and a \$1,119 check was turned in. Police returned the money to the student, who asked not to be identified. [Photo by Ken Bryson]

Problems in Student Association elections need to be corrected

By Cosmos Ekwunife

Your interpretation of some of the points made in the editorial "Poor voter turn-out shows dissatisfaction" seems to be very wrong.

The article in the first place is not a character evaluation of any person. To the best of my comprehension, the editorial indicated that we had a poor voter turn-out and the reasons why we had the low turn-out. It also recommended some changes that might be made in the future to encourage more student participation in the elections.

The turn-out for the last election was everything but great. A less than 10 percent turn-out to me is appalling. Jackson Yenn-

Batah was even the first person to complain about the low turn-out, and had already written an article criticizing students attitudes toward voting.

The issue is that we cannot blame the students for the low turn-out because many of them were not given the chance to know who they were voting for. Many did not vote for that reason only. Many who actually voted did so without knowing who the candidates were. That is why I recommended a forum prior to any future elections.

As for the budget which my article said to be \$30,000 and Yenn-Batah has corrected to \$28,425, I don't see that great a difference. My editorial did not imply that any person is mismanaging the money. What was said is that we should vote to elect the best people who are capable of representing us, and managing our money. We know the student leaders don't handle the money

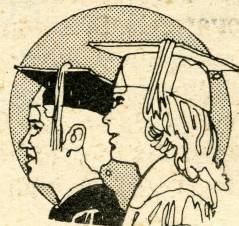
but they are the ones that propose how the money is spent. So if wrong proposals are made, the little amount we have might be unwisely spent.

Every student in the school does not have time to go through the records of the association. So our leaders should devise a way of keeping the students informed of what they are doing. After all we elected them and they represent us, so there must be a constant communication between the students and their leaders.

I do agree with Jackson that more incentives should be given to our leaders. I am in support of giving them some benefits for the time and pain they devote in serving us. They are students like us with normal semester academic loads, so if they find extra time to serve us, we should compensate them for that time.

Finally, Jackson, I think you should read the editorial all over again. Instead of twisting the points made in my editorial to mean something else, you should be looking at ways to encourage greater student turn-out in future elections.

I once again regret you have qualms with the editorial.



Classifieds

NEED CASH?—Earn \$500 each school year, 2-4 (flexible) hours per week placing and filling posters on campus. Serious workers only; we give recommendations. Call now for summer & next fall. 1-800-243-6679.

Seiko
Watches

35% OFF

With Student ID
Jim's Jewelers'

Green Acres Shopping Center

MOTHER'S RINGS
FROM 69" + STONES

Geneva Quartz 10 Diamonds
Reg. \$195 Now \$79.88

Other Brand Name Watches
Up To 20% Off

DIAMONDS FOR LESS

TIMEX WARRANTY STATION
American Express, Visa & MasterCard

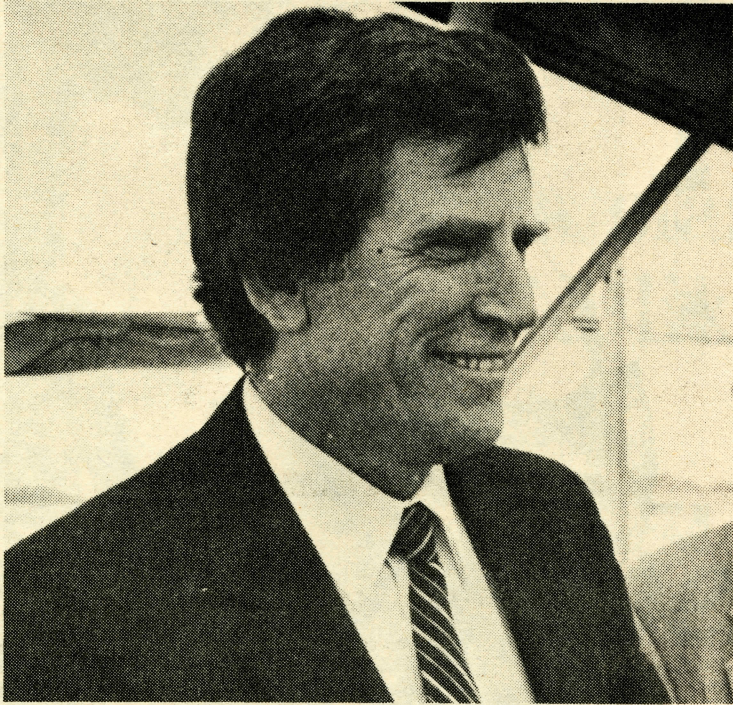
PRUETT'S 417 S. BECKHAM
SERVING EAST TEXAS OVER 35 YEARS

Mark's
FORMALS, INC.

Complete Selection by
Lord West after Six Peter Dink

Over 100 styles to choose from
LOWEST PRICES in EAST TEXAS
On many styles
One Day Service

K-MART PLAZA
1325 S. Beckham



CANDIDATE VISITS TYLER—Colorado Senator Gary Hart is met by reporters as he arrives at Tyler's Pound Field. [Photo by Janet Price]

Democratic hopeful offers new vision for the 1990s

By Janet Price

On April 19 more than 300 people gathered in Tyler's Courthouse Square to hear Colorado Sen. Gary Hart outline his political platform.

The ten-minute, prepared speech began with criticism for current Reaganomics as primarily benefitting the rich.

Hart questioned the current administration policy of tax cuts for big business saying he would have used the same resources to "rebuild entire industries to train our workers and to make our industrial plants the most modern of any on this earth, so we can re-employ hundreds of thousands of workers now without jobs."

Hart noted common interests shared by his home state, which he has served since 1974, and Texas. "We share ancestors who were prepared to leave the com-

fortable past and seek a new future for this nation." He said he could offer a new vision for the 1990s.

"We need a president who has the courage to say no to powerful unions who want to protect this nation's products and erect trade barriers. We must resist that protectionism. If the farmers of this state and my state are to have any chance in the future, it must be by opening up foreign markets and not closing off our own markets to foreign products. We must be the No. 1 trading nation on this earth."

Denouncing Reagan's defense policies, Hart said, "We must have the courage to say no to big national defense weapons contractors that don't make this

(Continued on page 21)

Stanley-political involvement enhances research, teaching

By Cosmos Ekwunife

For some, being married is a full-time job. But for Jeanie Stanley domestic duties are just one of many responsibilities in her life. Stanley is a professional political consultant and an assistant professor of political science at UT Tyler.

Hardly anyone can talk about the Texas Democratic Party political process without speaking of Stanley's contributions towards the process.

Reflecting on her involvement in politics, Stanley said, "It is all part of my job although my primary responsibilities are to be a better teacher, research and writing."

Students who take Stanley's classes share some interesting opinions about her involvements in politics. Many think she is well informed, very active politically and presents materials in class in a very unbiased manner.

Stanley is a member of many democratic party political institutions. She is the District I State Democratic Committee woman, a member of the policy making body for the Texas State Democratic Party Committee. This committee drafts the democratic presidential nomination process. She is also vice chairman of the planning and implementation committee which studies the strengths and weaknesses of the party.

Stanley has also made some notable contributions towards democratic party growth in Texas. She chaired the Non-Urban Areas Task Force—aimed at bringing together non-urban areas in order to challenge the dominant powers of the big cities in the democratic party. She helps local democratic groups and candidates. She is one of the founders of the Gregg County

Democrats, founded in 1980.

At the national level, Stanley helps democratic candidates in making their platforms known to the people of Gregg county. "As an individual I might support a particular candidate, but as soon as the party nominates a candidate, I throw my support behind the person, even if the person is not the candidate I supported prior to the nomination."

Stanley was a member of Governor Mark White's Transition Committee. This committee studied and made some recommendations to the governor on problems and issues confronting the state.

Stanley has no plans for the near future. "I'm satisfied with my teaching and what I'm doing as of now."

Stanley would like to see the students get more involved in the election process. She said students were more involved in politics in the 1960s and more voted then. "I would like to see them become that interested in politics again."

She attributed the decline in student voting to the fact that candidates have neglected to woo students. Instead they have concentrated on the traditional voters.

On how she is able to do so much in her life, Stanley said, "It all boils down to time and stress management." She said her husband has also been very supportive and understanding.

The political science faculty members think Stanley is informative and is a credit to the department. She is easy to work with and her opinion is well respected. They think she is a good organizer and never complains about the work load she gets.

Another faculty member said that the department has only three members and each of them has to do a lot. "It becomes necessary for us to work together and Stanley is very cooperative."



JEANIE STANLEY

One of the major recommendations made by the committee to the governor led to the creation of the Governor's Commission for Women. This commission looks at the status of women in the state. Stanley is also an appointed member of the State Board of Professional Counselors.

She is the University of Texas Legislative Liaison for the Texas Association of College Teachers.

Stanley is a known figure in American politics. She is listed in many political publications including "Who's Who in American Politics," "The World Who's Who of Women," and "Notable Women of Texas." She is presently devoting most of her time to teaching and writing. She will be participating in the writing of the seventh grade Texas history text. She has also presented many papers on politics and hopes to get them published in the near future.

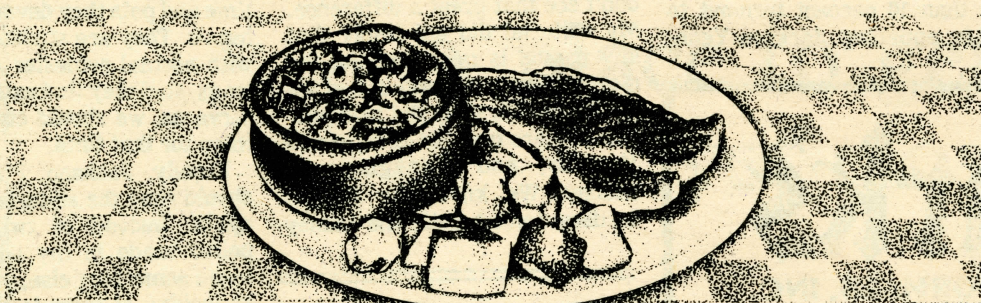
As for running for office,

you are safely away from here, read it." With that, he went back into his cave, leaving me alone in the bright sunlight of the spring day.

Quickly I turned and walked away, never looking back, yet cautiously stealing glances out of the corners of my eyes, afraid of being followed with this perhaps deadly secret in my hand. After a half hour or so of rapid steps, I stopped in a clearing. Looking to make sure no one was around, I slowly opened my hand to read the message.

It was a button. It read: "Stassen for President."

**NOW \$4.50
GETS YOU A MEAL
WE'LL STEAK OUR
REPUTATION ON.**



The Club Steak Platter.
A Half Pound Sirloin, Potatoes and a Salad.
For Lunch and Dinner, but only at

HOFFBRAU

LONE STAR STEAKS

2105 E. 5th • Tyler, Texas • 593-5611

EXUM'S
Gallery & Art Center
10 % DISCOUNT
With This Coupon

3707 Troup Hwy.

561-2371

ARBOR PLACE

323 Chimney Rock Rd.

581-1969

Tyler's finest for adult living...

...Unique and exciting, pleasurable and proud! A perfect balance between social and recreational activities and the quiet, relaxed atmosphere of home.

Monday-Friday
Saturday-Sunday

8 a.m.-6 p.m.
9 a.m.-6 p.m.

Best of luck '84 Grads!

Candidates for Degrees

GRADUATE DEGREES

INTERDISCIPLINARY STUDIES

MASTER OF ARTS

NAME	DISCIPLINES	HOMETOWN
Doris Jean Beacham	English/History/Psychology	Tyler, Texas
John Alexis Blair	Music/Sociology/Art	Longview, Texas
Harold Elliott Brunson, Jr.*	English/History/Drama	Jacksonville, Texas
Monte Vaughan Cooper	Speech/Criminal Justice/ Allied Health Science	Tyler, Texas
John R. Dulin	Criminal Justice/Political Science/ History	Henderson, Texas
Brenda Jean Elrod	History/Sociology/ Allied Health Science	Tyler, Texas
Shirley Revill Falzone	English/Political Science/ Sociology	Tyler, Texas
Glen D. Helm	Sociology/Political Science/ English	Jacksonville, Texas
Linda Hill Hutchins*	Journalism/English/Speech	Tyler, Texas
Sheila Kathryn Kimlicko	Speech/Drama/Music	Tyler, Texas
Pamela Love Pierce Mea	English/Drama/Speech	Lindale, Texas
Donnie Ray Page	Music/Sociology/Art	Jacksonville, Texas
Rhonda L. Scoby	Journalism/Speech/English	Tyler, Texas
Terry Yvonne Perkins Shirley	English/Journalism/Speech	Tyler, Texas
Clyde Everett Trautloff	Art/Applied Music/ Criminal Justice	Tyler, Texas
Gayle Susan Wilkening	Journalism/Psychology/Art	Longview, Texas

MASTER OF SCIENCE

Jimmy R. Calaycay*	Biology/Chemistry/Psychology	Arcadia, California
Melissa Anne Embry	Biology/Chemistry/ Computer Science	Henderson, Texas
Terri L. Fisher	Computer Science/Sociology/ Speech	Longview, Texas
Randy Ray Harwood	Computer Science/Art/ Journalism	Flint, Texas
Carl Frederick Hedges, Jr.	Chemistry/Mathematics/ Computer Science	Kilgore, Texas
Ronald David Kidder	Criminal Justice/Political Science/Sociology	White Oak, Texas

SCHOOL OF BUSINESS ADMINISTRATION

MASTER OF BUSINESS ADMINISTRATION

Ibrahim Mohd. Saleh Asa'd		Kuwait
Janice Lynn Barenkamp		Tyler, Texas
Danny C. Campbell		Mineola, Texas
Bruce Raymond Cannon*		Tyler, Texas
Candice Marie Cowen		Jacksonville, Texas
Venice Wayne Dyess		Tyler, Texas
Leslie Anne Evans		Tyler, Texas
Thomas Egon Jensen		Tyler, Texas
Erin Maureen Joyce*		Tyler, Texas
Bryan William Kirbo*		Gladewater, Texas
David Dorn Krape		Tyler, Texas
Charles O.C. Onyi		Arochukwu, Imo State Nigeria
Christine Marie Palmer*		Marquette, Michigan
Omar M. Rana		Tyler, Texas

SCHOOL OF EDUCATION AND PSYCHOLOGY

MASTER OF EDUCATION

Barbara G. Barnes	Curriculum & Instruction	Tyler, Texas
Reda Barnett	Health & Physical Education	The Woodlands, Texas
E. Eugene Buford	Curriculum & Instruction	Athens, Texas
Shirley Ann Carter	Early Childhood Education	Dallas, Texas
Shirley Faye Duncan Coon*	Reading	Tyler, Texas
Ann Stringer Crofton*	Special Education	Tyler, Texas
Parminder Kaur Dhesi	Curriculum & Instruction	Yorkshire, England
Leila M. Dixon*	Reading	Marshall, Texas
Audrey Gambill Doggett	Curriculum & Instruction	Tyler, Texas
Betty Jean Emmons	Curriculum & Instruction	Carlsbad, New Mexico
Bettye Dahnelle Adcox Freeman*	Curriculum & Instruction	Tyler, Texas
Susan Ehlen Hogan	Reading	Brownsboro, Texas
Martha J. Holmes	Early Childhood Education	Mineola, Texas
Marilyn Ann Taliaferro Johnson*	Health & Physical Education	Henderson, Texas
Ann Lynette Lewis*	Curriculum & Instruction	Bullard, Texas
Cassandra Myers*	Curriculum & Instruction	Lindale, Texas
Jim Ervin Pendergrass	Health & Physical Education	Henderson, Texas
Betty Reedy*	Special Education	Odessa, Texas
Agnes Renee Sanford Roberson*	Reading	Bullard, Texas
Katherine Sue Rudd	Special Education	Tyler, Texas
Janet C. Schliesser	Reading	Tyler, Texas

Anita Louise Spradlin
Pamela Sue Kay Steen
Teresa Marguerite Priest Sturrock
Marilyn Lynell Walker*

Special Education
Curriculum & Instruction
Reading
Curriculum & Instruction

Longview, Texas
Dallas, Texas
Tyler, Texas
Tyler, Texas

BACCALAUREATE DEGREES

SCHOOL OF BUSINESS ADMINISTRATION

BACHELOR OF BUSINESS ADMINISTRATION

David L. Aldredge*	Accounting	Kilgore, Texas
Donald Kent Allan	General Business	Tyler, Texas
Sonia Denise Powell Assaf	Accounting	Marshall, Texas
Craig Matthew Baer	Management	Tyler, Texas
Kelvin D. Baker	Accounting	Henderson, Texas
Harold Ray Beene	Management	Gilmer, Texas
Ricky S. Berry	Management	Tyler, Texas
Brent A. Berryman	General Business	Tyler, Texas
Angela Smith Billings	Finance	Tyler, Texas
Mary Elizabeth Bishop*	Accounting	Longview, Texas
Kristi Lynn Brumlow Cantu	Accounting	Longview, Texas
Richard Lynn Carter	Accounting	Ben Wheeler, Texas
Kevin Dane Cato	Economics	Kilgore, Texas
Sheryl Renee Chapman	Management	Lindale, Texas
Jeffrey Weil Cheavens	Finance	Tyler, Texas
Janna Lee Clardy	General Business	Jacksonville, Texas
Cheryl Lynn Clark	Management	Tyler, Texas
Lisa Caye Cloud	Management	Tyler, Texas
John Curt Copeland*	Marketing	Whitehouse, Texas
Jennifer Lynn Walker Crawford	Accounting	Longview, Texas
Beverly Miller Diviney*	Finance	Linden, Texas
Lucy A. DuBose*	Accounting	Longview, Texas
Fran Allyson Farris	Management	Palestine, Texas
William Robert Faulkner	Finance	Austin, Texas
Benjamin B. Ferrell, Jr.*	Accounting	Tyler, Texas
Cap Field	Marketing	Longview, Texas
Tony J. Florence	Marketing	Troup, Texas
Jeffrey N. Fuller*	Management	Mt. Vernon, Texas
Rheanne Goolsbee*	General Business	Winona, Texas
William Scott Goolsbee*	General Business	Tyler, Texas
Lee Maxedon Gordon	Management	Longview, Texas
Sandra Gayle Halford*	Management	Gonzales, Louisiana
James L. Hassell, Jr.	Marketing	Jacksonville, Texas
David Marshall Hayes	Accounting	Longview, Texas
James Dale Hayes	Accounting	Tyler, Texas
Travis Glenn Hays	Management	Carthage, Texas
Clinton Heines*	Accounting	Tyler, Texas
Carole Peschel Hodges	General Business	Palestine, Texas
Linda M. Kerr	General Business	Quitman, Texas
Patricia Lynn King	Management	Lafayette, Louisiana
Juana Alicia Mancha	Accounting	Longview, Texas
Harvey Lane Mayfield	Management	Mineola, Texas
Kathleen Mays*	Accounting	Longview, Texas
Michael Bryan McCary	Management	Corsicana, Texas
Stephanie Ann McMillan*	Accounting	Troup, Texas
Melvin Lloyd McNeal, Sr.	Accounting	Caribou, Maine
Carl H. Montgomery	General Business	Whitehouse, Texas
Celeste L. Henderson Nations	Accounting	Henderson, Texas
James Paul Nelson	Management	Henderson, Texas
Melanie Gayle O'Brian*	Accounting	Beaumont, Texas
Janice Kay Odom	Accounting	Mineola, Texas
Donna Jean Parrott	Management	Lindale, Texas
Rebecca Lynne Owens Perkins*	Management	Longview, Texas
Kim G. Plemons	Finance	Corsicana, Texas
Sherri Elizabeth Duke Priest	Accounting	Tyler, Texas
Amelia Nell Walker Proctor	Accounting	Tyler, Texas
Sandra Berry Ray	General Business	Corsicana, Texas
Susan Jo Harper Richardson	Finance	Tyler, Texas
Sherrie Dianne Riley	Accounting	Lindale, Texas
Judith Tucker Roberts	Accounting	Gilmer, Texas
Lisa Morse Robinson*	Management	Gilmer, Texas
Tommy James Rolf, Jr.	Marketing	Mt. Pleasant, Texas
Lynne E. Rowland	General Business	Palestine, Texas
Susan Fletcher Salter	Accounting	Longview, Texas
Craig A. Schkade*	Accounting	Austin, Texas
Molly Ann Simms	Finance	Tyler, Texas
Harold W. Skidmore*	Accounting	Palestine, Texas
Barbara Lewis Southern*	Accounting	Longview, Texas
Rodney L. Stephen*	Accounting	Palestine, Texas
Carl Martin Stewart	Finance	Carthage, Texas
Dolores L. Stuckey*	Accounting	Diana, Texas
James Edward Thigpen	General Business	Gresham, Texas
Nancy E. Tow	Accounting	Shallowater, Texas
Valerie Tuttle*	Marketing	Frankston, Texas
Stanley C. Ukaegbu	Marketing	Umuahia, Nigeria
Kathy E. Vigore	Management	Tyler, Texas
Michelle J. Walker	Management	Longview, Texas
S. Gene Walker, Jr.	Management	Gladewater, Texas
Jean J. Wall	Finance	Longview, Texas
Jessica Lange Warren	Accounting	Longview, Texas
Michael Blaine Wilson*	Management	Tyler, Texas
Robin Pascucci Wolters	Accounting	Tyler, Texas
Samuel Forrest Worthen	Accounting	Big Sandy, Texas
Brenda Lanet Wynn	Accounting	Lindale, Texas
Jackson Yenn-Batah*	Finance	Accra, Ghana

SCHOOL OF EDUCATION AND PSYCHOLOGY

BACHELOR OF APPLIED ARTS AND SCIENCES

Linda Gaile Adams*	Athens, Texas
Thomas Eugene Burklin	Tyler, Texas
Rocky Joe Spraggins	Jacksonville, Texas
Byard Stratton Weems	Tyler, Texas

BACHELOR OF ARTS

Kristen Nussbaum Beard	Psychology	Corsicana, Texas
Valenda Bostick	Psychology	Tyler, Texas
Jacquelyn R. Cates*	Psychology	Tyler, Texas
Timothy Edward Davis	Psychology	Gilmer, Texas
Kathryn Palmer Dorff	Psychology	Tyler, Texas
Mary Elizabeth Gordon	Psychology	Tyler, Texas
Rebecca Lynn Graves	Health & Physical Education	Gladewater, Texas
Venita Jean Gray	Health & Physical Education	Gary, Texas
Pauline Dawson Hampton*	Psychology	Tyler, Texas
Kathern Ann Jordan	Psychology	Longview, Texas
Edward Lynn Kelley	Psychology	Athens, Texas
Ellen Pearl Larter*	Health & Physical Education	Rochester, New York
Leigh Ann Legg	Health & Physical Education	Tyler, Texas
Mary Kathleen Mason*	Health & Physical Education	Hallsville, Texas
Charles Robert O'Brien*	Health & Physical Education	Longview, Texas
John Mark Perry*	Psychology	Tyler, Texas
Tamara Hunt Phillips	Psychology	Tyler, Texas
Tommy B. Pruett	Psychology	Jacksonville, Texas
Michael R. Riggs*	Psychology	Galveston, Texas
Patsy Karen Williams Roberts*	Psychology	Gilmer, Texas
Rebecca Jean Wise Smith	Health & Physical Education	Tyler, Texas
Rhonda Beth Pike Spencer*	Health & Physical Education	Whitehouse, Texas
Kathryn Ott Toon*	Health & Physical Education	Kilgore, Texas
John R. Yarbrough	Psychology	Palestine, Texas

BACHELOR OF SCIENCE IN EDUCATION

Cynthia Bush	Early Childhood Education	Tyler, Texas
Teresa Dianne Cannon	Early Childhood Education	Tyler, Texas
Diane S. Chevalier	Early Childhood Education	Gilmer, Texas
Lennie Ann Dunagan*	Early Childhood Education	Hallsville, Texas
Sally Elizabeth Henderson*	Early Childhood Education	Tyler, Texas
Daritra G. Hunley*	Early Childhood Education	Tyler, Texas
Billie Jo Sherman Lawson	Early Childhood Education	Jacksonville, Texas
Cynthia Loretta Owens	Early Childhood Education	Tyler, Texas
Sharon Denise Snow*	Early Childhood Education	Gilmer, Texas

ELEMENTARY EDUCATION

Cynthia Lynn Garner Bailey	Reading	Brownsboro, Texas
Sheila Rae Barker	Reading	Athens, Texas
Pamela S. Best	English	Baton Rouge, Louisiana
Joni Murphy Black	English	Gladewater, Texas
Peggie Ruth Silvertooth Blanton	Reading	New London, Texas
Clyde Rick Brock	Reading	Tyler, Texas
Debra Lynn Gentry Cline	English	White Oak, Texas
Sheree Anne Collins	English	Kilgore, Texas
Charla Felicia Lanier Cox	Special Education	Palestine, Texas
Linda Kay Davis*	English	Teague, Texas
Terrie DeLane Pritchard Davlin	Special Education	Whitehouse, Texas
Patricia G. Fisher*	Reading	Grand Saline, Texas
Nancy Surley Gaines	English	Waco, Texas
Tracy Atkeison Goff	Reading	Corsicana, Texas
Karen Renee Graham	Special Education	Crandall, Texas
James Noah Greear, IV*	Special Education	Wytheville, Virginia
Ester LaVerne Hadnot	Reading	Chandler, Texas
Julie K. Haley	Reading	Tyler, Texas
Kathy Ledger Harris	Reading	Tyler, Texas
Mariann Smith Hassell	Reading	Greenville, Texas
Jill Elizabeth Hicks*	English	Winona, Texas
Ronda Lois Hollingsworth	Reading	Ennis, Texas
Glenda A. Hughes	Special Education	Tyler, Texas
Wanda Jane Hunter*	History	Gilmer, Texas
Dolores Floyd Dawson Johnson*	Reading	Tyler, Texas
Cindy Black Jones*	Reading	Longview, Texas
Luell Jay Jones	Reading	Alvarado, Texas
Pamela Ann Tomlin Jones	Reading	Whitehouse, Texas
Sandra Kay Keeling	Psychology	Kemp, Texas
Kelly Waggoner Leftwich	Reading	Longview, Texas
Molly Lee Long	Reading	Lindale, Texas
Denice Rosie Loven	Special Education	Trinidad, Texas
Karen Madsen*	Reading	Mineola, Texas
James E. Malone	History	Mineola, Texas
Connie Lynn McCrabb	Reading	Tyler, Texas
Amy Lou Minter*	Reading	Longview, Texas
Raschel Brenette Mixon*	Reading	Gladewater, Texas
Kelly Renee Montgomery	Reading	Jacksonville, Texas
Robin Rena Morman	Special Education	Malakoff, Texas
Terri Myers	Reading	Longview, Texas
Renita Oldacre*	Special Education	Talala, Oklahoma
Ethel Hayes Palmer	Special Education	Kilgore, Texas
Gay Nelle Paresky*	Biology	Tyler, Texas
Annalisa Crow Perry	Psychology	Tyler, Texas
Glyn Braly Phillips	Reading	Corsicana, Texas
Kimberly Dawne Shryock Price*	Health Education	Rockwall, Texas
Loretta Currington Roberson	Special Education	Chandler, Texas
Margie Silvertooth	Reading	Longview, Texas
Gwendolyn Skinner	Reading	Longview, Texas
Denise Truitt Smith*	Special Education	Daingerfield, Texas
Jacqueline Denise Krewall Smith*	Reading	Tyler, Texas
Martha Lisabeth Smith	History	Longview, Texas
Margaret Ann Dorsey Soderberg	Reading	Longview, Texas
Carla Suzanne Spearman	History	Tyler, Texas
Shirley Louise Thompson Taylor	Psychology	Henderson, Texas
Ada Louise Terry*	Reading	Hallsville, Texas
Annie Ruth Varnadoe Trawick	Psychology	Colquitt, Georgia
Linda S. Tyler	Reading	Houston, Texas
Patricia Ann Dean Webber*	Reading	Overton, Texas
Laura Kathryn Spivey Wells	Biology	Van, Texas
Joyce Carolyn Westbrook	Reading	Tyler, Texas
Deborah Kay Wheeler	Reading	Kilgore, Texas
Tyke M. Wilkerson*	Reading	Canton, Texas
Nita Faith Nelson Winter*	Reading	Tyler, Texas
Margaret Ann Nail Wright	Reading	Arp, Texas

SECONDARY EDUCATION

Mary Rebecca Dawson Carroll	English/Computer Science	Whitehouse, Texas
Jesse C. Casey*	Mathematics/Physical Education	Hallsville, Texas
Teri Gail Mills Green*	English/Business	Troup, Texas
Regina Kaye Willis Jones*	Special Education/Psychology	Tyler, Texas
Joan Kelly Pace	English/Political Science	Mabank, Texas
Eric Jonothon Sivertson	English/Speech	Chicago, Illinois
Cindy Thompson	English/History	Tyler, Texas
Julie Ann Travis*	Psychology/Special Education	Dallas, Texas

BACHELOR OF SCIENCE

Kent Maynard Abernathy	Technology	Gladewater, Texas
James D. Alexander	Technology	Tyler, Texas
Joseph Edgar Austin, Jr.	Technology	Lindale, Texas
James Joey Baggett*	Technology	Buffalo, Texas
C.T. Baxter*	Technology	Athens, Texas
Billy Burdette Brantley, Jr.	Technology	Kilgore, Texas
Gary Fulton Bradberry	Technology	Tyler, Texas
Kenneth E. Bridger*	Technology	Waco, Texas
Diana Kay Crosby	Health Professions	Tyler, Texas
Jimmy Gwen Durham	Technology	Chandler, Texas
Brenda Kay Epperson	Physical Education	Chandler, Texas
Charles Everett Florence	Technology	Tyler, Texas
David Bryan Foster	Technology	Paris, Texas
Walter Andrew Fuller, III	Vocational Education	Tyler, Texas
Leann Gibson	Physical Education	Gilmer, Texas
Gary R. Gilmore	Technology	Tyler, Texas
Earl Wayne Godt, II	Technology	Kilgore, Texas
Ramiro Gonzalez, Jr.*	Vocational Education	Palestine, Texas
Carol Ann Halcumb	Physical Education	Longview, Texas
James Michael Hale*	Technology	Seagoville, Texas
James Lawrence Kilborn	Technology	Quitman, Texas
Thomas Calvin Lancaster	Technology	Longview, Texas
Robert S. Loftin*	Technology	Bullard, Texas
Marshall William Marshall*	Technology	Tyler, Texas
Carolyn Jo Stanley McClendon*	Physical Education	Ore City, Texas
Joseph Stewart McDaniel	Technology	Kilgore, Texas
Malcolm Jeff Morris	Technology	Lindale, Texas
Carl Wayne Owens	Technology	Tyler, Texas
Sheri Lee Pruitt	Physical Education	Hawkins, Texas
Kenneth Glynn Reynolds*	Technology	New London, Texas
Alan Edgar Rogers	Technology	Tyler, Texas
Don Lewis Sebring	Technology	Tyler, Texas
Francis (Frank) Smyth	Physical Education	Longview, Texas
Harold Jack Starkey	Technology	Tyler, Texas
Raymond James Stayancho	Technology	Athens, Texas
Bobbie Nell Steed	Physical Education	Gilmer, Texas
Johnny Lynn Thompson, II	Technology	New London, Texas
Larry Glynn Wilson*	Technology	Tyler, Texas
Karen Ann Yoder	Health Professions	Tyler, Texas

SCHOOL OF SCIENCES AND MATHEMATICS**BACHELOR OF SCIENCE**

Stanley K. Arnold	Computer Science	Tyler, Texas
Earl C. Beary	Computer Science	Salt Lake City, Utah
William Weatherly Bennett*	Computer Science	Longview, Texas
Timothy Lenson Berry	Computer Science	Tyler, Texas
Kathy Williams Brand*	Computer Science	Liberty City, Texas
Anthony LeRoy Brightwell*	Computer Science	Henderson, Texas
Virgil G. Buell	Computer Science	Seattle, Washington
Randy Lee Burns*	Computer Science	Tyler, Texas
John Thomas Crews	Computer Science	Lindale, Texas
Harold Wayne Eford	Computer Science	Longview, Texas
James T. Fox	Computer Science	Jefferson, Texas
Peggy Marie Froelich*	Computer Science	Longview, Texas
Evert Ray Gasway	Computer Science	Tyler, Texas
Diana Kay Goins	Computer Science	Diana, Texas
Gordon Franklin Green	Biology	Longview, Texas
Terry Lee Goodman	Computer Science	Gladewater, Texas
Ronald Lee Howell	Computer Science	Gilmer, Texas
Curtis Lynn Jordan*	Medical Technology	Frankston, Texas
Eric Wayne Josseland	Computer Science	Tyler, Texas
Diane Lynn Phillips Larsen	Computer Science	Corsicana, Texas
Franklin Daniel Lee*	Mathematics/Computer Science	Tyler, Texas
Janice Sue Moore	Computer Science	Frankston, Texas
Diana Ugo Okeke	Computer Science	Imo-State, Nigeria
Clovis Joseph Pitre*	Mathematics	Longview, Texas
Toni Rae Pollock	Computer Science	Tomah, Wisconsin
Robert Earl Reed, Jr.	Computer Science	Tyler, Texas
Jose Justino Regalado	Computer Science	Laredo, Texas
David Kurt Roy	Computer Science	Longview, Texas
Jack Thomas Slagel*	Computer Science	Longview, Texas
Deborah Kay Smith	Computer Science	Troup, Texas
Dennis Wayne Smith	Computer Science	Rusk, Texas
Bridget Dawn Spencer	Computer Science	Gilmer, Texas
Douglas C. Tassan	Computer Science	Jacksonville, Texas
Ronald Bruce Watts	Computer Science	Gilmer, Texas

BACHELOR OF SCIENCE IN NURSING

David F. Adamson	Nursing	Tyler, Texas
Rita Teague Akins	Nursing	Longview, Texas
Shirley M. Bealer	Nursing	Tyler, Texas
Jacqueline Alta Wells Bowers	Nursing	Lafayette, Louisiana
Laurie J. Brantley	Nursing	Marshall, Texas
Ronatta Sue Brown	Nursing	Troup, Texas
Shirley Ann Bryars*	Nursing	Red Springs, Texas
Kathleen E. Jones Burris	Nursing	Tyler, Texas
Relda Chris Cochran*	Nursing	Tyler, Texas
Marilyn E. Fielding	Nursing	Whitehouse, Texas
Shirley Jones Freeman	Nursing	Tyler, Texas
Vicki McClure Garcia	Nursing	Tyler, Texas
Mary Claire Garrett*	Nursing	Gladewater, Texas
Jan I. Guinn	Nursing	Clarksville, Texas
Jimmie Jill Hill	Nursing	Rotan, Texas
Melanie Hogden	Nursing	Tyler, Texas
Jana Janiece Jones	Nursing	Longview, Texas
Dottie S. Kinney*	Nursing	Longview, Texas
Margaret Lenart	Nursing	West, Texas
Colleen McNicholas Lemons	Nursing	Ft. Worth, Texas
Steven J. Miller	Nursing	Lindale, Texas
Dolores J. Rivas Potts	Nursing	Tyler, Texas
Marla June Raper	Nursing	Longview, Texas
Daisy Roberson	Nursing	Tyler, Texas
Ethel Lee May Roberson	Nursing	Chandler, Texas
Elaine Harris Ross	Nursing	Carthage, Texas
Peggie J. Schriener	Nursing	Athens, Texas
Pamela Gayle Schuler*	Nursing	Clarksville, Texas
Everlean Starling*	Nursing	Tacoma, Washington
Marion K. Stewart*	Nursing	Flint, Texas
Loraye Jane Talaasen	Nursing	Longview, Texas
Donna Tebbetts Trigg	Nursing	Palestine, Texas
Coldon Lee Wilson*	Nursing	Tyler, Texas

SCHOOL OF LIBERAL ARTS**BACHELOR OF ARTS**

Ruth Frances Arps*
Lamern Layton Bailey*
Miodrag A. Botto*
Terry Elizabeth Brown
James Edward Bynum
Doris McCarty Coleman
Kathryn M. Cunningham
Diane Davis
Deborah Ruth Dunn
William C. Fleisher
Danielle Odette McNiel*
Angelia Gay Patterson
Billie Colwell Pope
Sandra Beavers Tarasiuk
Rebecca Elizabeth Taylor*
Cynthia Darlene Winn*

Sociology
English
Political Science
English
Journalism
History
Sociology
Journalism
English
Journalism
English
Journalism
English
Political Science
Sociology

Winona, Texas
Tyler, Texas
Tyler, Texas
Houston, Texas
Overton, Texas
Hallsville, Texas
Scottsdale, Arizona
Longview, Texas
Tyler, Texas
Angleton, Texas
Austin, Texas
Mineola, Texas
Palestine, Texas
Gilmer, Texas
Bogata, Texas
Marshall, Texas

BACHELOR OF FINE ARTS

Adam John Ferguson
Terri Ann Stone Gray*
Ira Gail Hampton
Andrea Dalene Husky
Isabel Kent Myers*
Arnold Pena
Susan Ann Perry
Joy Pugh*
Joe Allen Waldrop, II
Dee Ann Wilson*

Art
Art
Art
Music
Art
Art
Art
Art
Art
Music
Art

Chicago, Illinois
Longview, Texas
Winona, Texas
Lubbock, Texas
Henderson, Texas
Corsicana, Texas
Tyler, Texas
Athens, Texas
Emory, Texas
Tyler, Texas

BACHELOR OF GENERAL STUDIES

Lou Hayes
Ulmer Cone Johnson*
Gregory Alan Moody
Jimmie Ann Dobbs Zeigler*

Hosston, Louisiana
Canton, Texas
Big Sandy, Texas
Longview, Texas

BACHELOR OF SCIENCE

Tracy Ann Aston*
Linda Sue Babb*
Robin Elaine Bivings
Patricia Lynn Boyd
Kenryu Maeda Bryson
Kathy Lynn Weir Carlton
Margaret Joyce Campbell
Kevin S. Early
Cosmos Bryan A. Ekwunife
Peggy A. Emery
Debbie Rhodes Forsander
John Robert Gilley, II*
James Randall Goff
Mary Evelyn Guthrie*
Kenneth Lynn Hailey*
Lynn B. Hamilton*
Randall C. Hammontree*
Phyllis Patrick Hart
Kenneth Wayne Hill
Jerry Anglin Hunter*
Wanda Lee Hunter*
Bret Wright Johnston
Julie Humphrey Kirl*
William Earl Kuykendall*
Charles Douglas Lightfoot
Jannabeth McComb
Janetta Cole Milburn*
Aletha Cole Pridgen
Kevin Mark Rushing
James Lee Russworm*
Lynette Moore Sandlely
Jerry Fulton Scott
Benita Shirley
Charles U. Starkey
James Lindsey Thompson
Rhonda Tullis Wright*
Charlton Howard Wood
Jackson Yenn-Batah*

Criminal Justice
Criminal Justice
Criminal Justice
Criminal Justice
Journalism
Sociology
Criminal Justice
Criminal Justice
Political Science
Journalism
History
Criminal Justice
Criminal Justice
Criminal Justice
Criminal Justice
Criminal Justice
Sociology
Sociology
Criminal Justice
Criminal Justice
Criminal Justice
History
Criminal Justice
Sociology
Criminal Justice
Journalism
Criminal Justice
Political Science
Political Science
Criminal Justice
Speech
Sociology
Journalism
Political Science
History
Sociology
Political Science
Political Science

Dallas, Texas
Tyler, Texas
Dallas, Texas
Tyler, Texas
Canton, Texas
Katy, Texas
Tyler, Texas
Tyler, Texas
Abba, Nigeria
Tyler, Texas
Hallsville, Texas
Tyler, Texas
Jacksonville, Texas
Troup, Texas
Longview, Texas
Tyler, Texas
Overton, Texas
Tyler, Texas
Marshall, Texas
Tyler, Texas
Tyler, Texas
Lake Jackson, Texas
Longview, Texas
Athens, Texas
Palestine, Texas
Winona, Texas
Longview, Texas
Tyler, Texas
Pittsburg, Texas
Austin, Texas
Tyler, Texas
Tyler, Texas
Tyler, Texas
Tyler, Texas
Hawkins, Texas
Waco, Texas
Accra, Ghana

*Denotes Fall Semester Graduates

NOTES: Upon completion of all exams and class requirements, a list of all students entitled to receive their degrees is submitted by the Registrar to the University Faculty Senate for approval. This list is referred to during the commencement ceremony as the "Official Program."

Spring students announced as "graduating with honors" are official only after verification of spring grades.



Panache
Fine Casuals

Congratulations Grads of '84
and may you have a bright and
successful future!

Don't Forget...

**STUDENT ID DAY
EVERY THURSDAY**

15% Off**Any Purchase**

(Does not apply to sales merchandise)

**Tom Thumb-Page
Shopping Center**

(on Paluxy side)

1908 E. SE. Loop 323

592-6630

Hours: 10:00-5:30



A sheriff's proper mission

One of the first things a sheriff should understand is that he is a public servant of ALL the people. He must never forget that he is to use his authority ONLY to protect the lives and property of the citizens he serves — and NOT for his own personal ends.

Frank Brunt

Sheriff Frank Brunt offers solid record of public service



Since March 10, 1983, one of Texas' most respected law enforcement officers has served as Sheriff of Smith County.

In that position, Frank Brunt has restored honor, pride, and efficiency to our Sheriff's Department.

The following is a capsule summary of Brunt's career background.

- After attending Allen Military Academy in Bryan, was employed three years as special agent by Southern Pacific Railroad.
- Became deputy sheriff of Cherokee County.
- Was elected Cherokee County

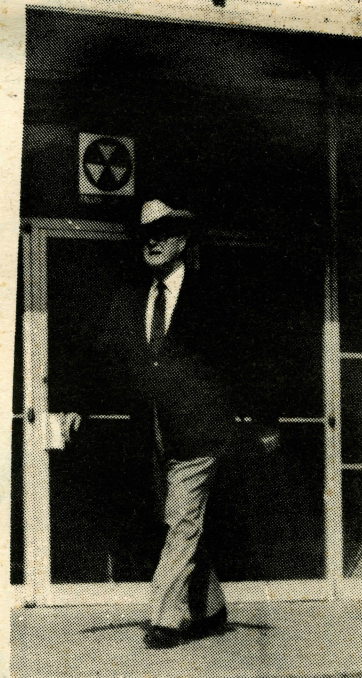
sheriff and re-elected to seven more terms.

- Received numerous commendations from the FBI, Department of Public Safety, grand juries and other Texas law enforcement offices.
- Brunt's department was subject of in-depth feature in Texas Sheriff's Magazine on officer recruitment, jail management and securing of "technicality-proof" evidence in criminal cases.
- Became president of Texas Sheriff's Association.
- Was employed by Exxon Corp. as special investigator for security matters.
- Completed Texas Ranger

School in Austin and was appointed by Governor as a Special Texas Ranger (while with Exxon).

- Assisted in founding East Texas Peace Officers Association. Was that organization's first president.
- Resident of Tyler since 1966.
- Came out of retirement to fill vacancy existing in Smith County Sheriff's office.
- At 1984 Honors Luncheon for outstanding East Texas law enforcement officers was described by retired Capt. Ferman C. Carpenter of Highway Patrol as "fearless, effective, fair."

Pictured are (from top) Sheriff Frank Brunt and Campaign Chairman Harry Loftis at January press conference announcing Brunt's candidacy for full 4-year term. Sheriff Brunt during workday. And Brunt with other honorees at recent honors luncheon for veteran East Texas law enforcement officers.



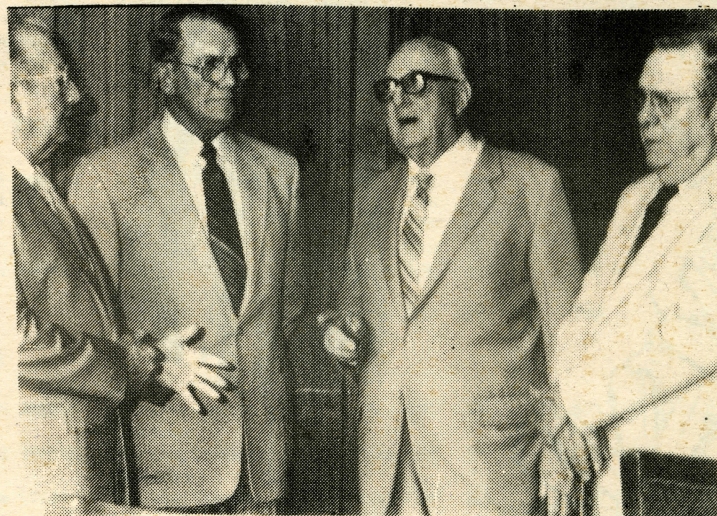
KEEP HONOR IN THE OFFICE



Keep FRANK

BRUNT

Smith County Sheriff



(Pol. Adv. Pd. by Citizens For Sheriff Brunt Committee, George Hall, Treas., 916 First Place, Tyler, Texas 75701)



Pro rodeo is Whitehouse girl's dream

By Dian Windham

Horses, calves, goats, barrels and rodeos are synonymous with Stephanie Cordell. "My father, Pancho, had roped calves and steers in rodeos since his college days," said Stephanie.

Stephanie followed in his foot steps. "I began barrel racing in rodeos when I was seven. Me and my three sisters would go to all the rodeos that daddy rode in," said the younger Cordell.

The Cordell's have lived in Whitehouse since Stephanie was 9-years-old. She attended Whitehouse schools and was a cheerleader in high school. Her rodeo days began paying off when she was in the tenth grade.

Cordell won the 1980 and 1981 All-Around Cowgirl for the East Texas High School Rodeo Association. Also in 1980 she was the Texas High School All-Around Cowgirl. Cordell's weekends are consumed year-round with rodeos over the North and Southeast parts of Texas; not just one rodeo per weekend, but as many as five.

During the week the petite brunette attends The University of Texas at Tyler and is a junior majoring in elementary education. Week day afternoons, she teaches riding lessons to groups of all ages. "I guess the oldest student is about 50," said Cordell.

In 1983, Region V of the North American Rodeo Commission sent the top three contestants to Denver, Colorado. Cordell, a high school senior, captured the Texas Rodeo Association Rookie of the Year in barrel racing. She placed second in break-away roping,

third in goat tie and seventh in barrel racing.

Stephanie attended Tyler Junior College and holds a degree in Liberal Arts. While at TJC she won the 1982 Champion Barrel Racer award from the Stephen F. Austin State University and the 1983 Texas Barrel Racing Association Spectacular Champion Barrel Racer.

"We have about 15 quarter horses, 10 calves, some steers and goats. I have three horses I usually ride. Gay Bar Eagle "Gabe," is my barrel horse. I use Charley for roping and Trigger is for goat tying. He's about 11-years old," said Cordell.

Cordell is "sitting in second place for the year in money winnings" for the 1984 Central Rodeo Association.

She proudly shows the belt buckles she has won and talks of the saddles she has won; "I win a saddle just about every time. And they always get stolen. The insurance replaces them, but it's not the same."

Her window is filled with trophies. "Yeah, my older sister and I have won about 400 altogether." Her voice lowers, "They are pretty, but there's just no place to put them and they collect dust."

This weekend, Stephanie is entered in the Third Annual World Junior Champion Barrel Race to be held in Karnack. "It is statewide competition for the 20 and under age group with a \$30,000 prize."

Her plans after college include a year on the pro circuit.

"I will go pro and join the

Women's Professional Rodeo Association and then I plan to get married," said Cordell.

The man in her future is East Texas State junior business major, Travis Harmon.

"I've been dating Travis since high school. We met at a high school rodeo. He's a calf roper. We haul together now, you know, chip in on the gas and stuff."

"When he graduates from East Texas and I graduate from UT, we will turn pro and we'll ride together. After a year we will marry and probably live in Sulphur Springs or somewhere in this area," concluded Stephanie.

Graphic artist brushes through fine arts

(Continued from page 1)

how to market your work," says Spurgers.

Not a materialistic person, Spurgers' goals are "...simply to get [his house and some acreage] paid for." Since his degree will be in fine arts, will he leave the commercial art field?

"I might not quit completely, but I might be more selective in what I do," Spurgers says.

Dr. Bill Stephens, professor and chairman of the Department of Art, believes Spurgers is some one who should be commended for all that he is accomplishing. "Lannie has pursued his dream and you can't help admire someone who's paid the price to do that, because it doesn't come easy," says Stephens.



CALF ROPER—UT Tyler Junior Stephanie Cordell of Whitehouse has been involved in the rodeo circuit since she attended Whitehouse High School. She plans to turn to the professional rodeo circuit after she graduates from UT Tyler. [Courtesy photo]

'The Sage' offers his wisdom on voting alternatives

(Continued from page 2)

me, Wise One. Who should I vote for?"

"Who have you considered, my son?" came the benevolent reply.

"Would Mondale be the one?" I asked, chin quivering.

"No, my son. Walter stands for the Democratic Party of the 1930s. He seeks to revive the coalitions that swept FDR into office for four consecutive terms. He promises the world, recalls the past jargon of the Golden Years of the Democrats. Walter is not the one to lead into the future."

"Could it be Ronnie?"

The Sage muffled a laugh. "Ronnie is a unique combination of the 1950s and the late 1800s. He sees the world in the eyes of a post-World War II alignment, where there was the U.S.S.R., the United States and the rest of the world that was either too destroyed by war or too backward to prove any threat to the first two. Our industrial might was built upon a world that had no industry to speak of, a world of needers, not makers. He also regards Big Business with the eye of the old Industrial Tycoon that built up his business with little or no thought to the environment or the consumer, whose only concern was the dollar sign."

Two of the four candidates had been eliminated from the choice. My shoulders began to pick up; the burden was lifting. With a trace of hope in my voice, I asked, "Would Jackson be the right one?"

"Jesse is carrying the ghost of Martin Luther King, Jr. in front

of him. He seeks to bring us into the 60s, with freedom marches on Washington, a reopening of issues long dormant."

"But, Sage, surely there is still a great need for racial equality in this nation. Surely there is still a need for Martin Luther King today."

"To be sure, there is still a great deal of injustice and bias because of race in the U.S. today. I did not say there wasn't. But Martin Luther King was for his time, his day. Jesse Jackson must move beyond Dr. King and break new ground."

"To anticipate your next question, just as Mondale is FDR, Reagan is a cross between Vice-President Nixon and Rutherford B. Hayes, and Jesse Jackson is Dr. King, so Mr. Hart is trying to be JFK. The similarities are striking, but that is all they are—similarities. Mr. Hart tells of new ideas, but he does not articulate them. He could take us into the 90s and beyond, but then again he may take us back to the early 60s."

Again my shoulders sagged. "Wise One, if all the candidates are unqualified for the task of moving the country forward, of facing the problems of today and of creating new concepts and new endeavors to shape the country into the next generation, who is there?"

The Sage smiled knowingly. "There are two possible answers. The first is difficult to do."

"What is it?" I asked.

"We must start over. Scrap the

Constitution and rewrite a new one. Do away with the present bureaucracies and institutions

and create new ones. The present constitution has been around for 200 years. It is time for a new one. We need a clean slate, a new beginning."

"But, Sage," I cried, half in shock, half in horror, "you are

proposing a revolution. Peaceful, perhaps, but revolution, nonetheless."

He nodded. "That is true, my son, but it is either that or the alternative."

I swallowed hard, afraid to ask the next question, yet I knew I had come too far to stop now. "And—and what is the—alter-

native?" I stammered.

The Sage beckoned me closer with his finger. He also leaned closer to me so that our heads almost touched. Looking around to insure no one was watching, the Sage pulled a small round disk from his pocket.

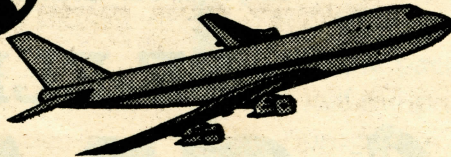
"Take this," he said. "When

(Continued on page 4)

TRAVEL BANQUE INTERNATIONAL INC.

agents for business and pleasure travel

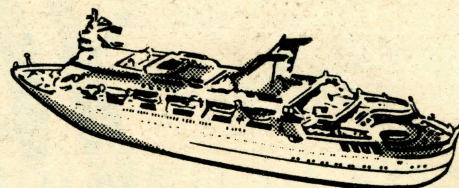
TBI



COMPUTERIZED
AIRLINE RESERVATIONS



SPECIALIZING IN
AIRLINE TICKETS
HOTEL & CAR RESERVATIONS
CUSTOMIZED GROUP TOURS
CRUISES



NO SERVICE CHARGE

561-2828

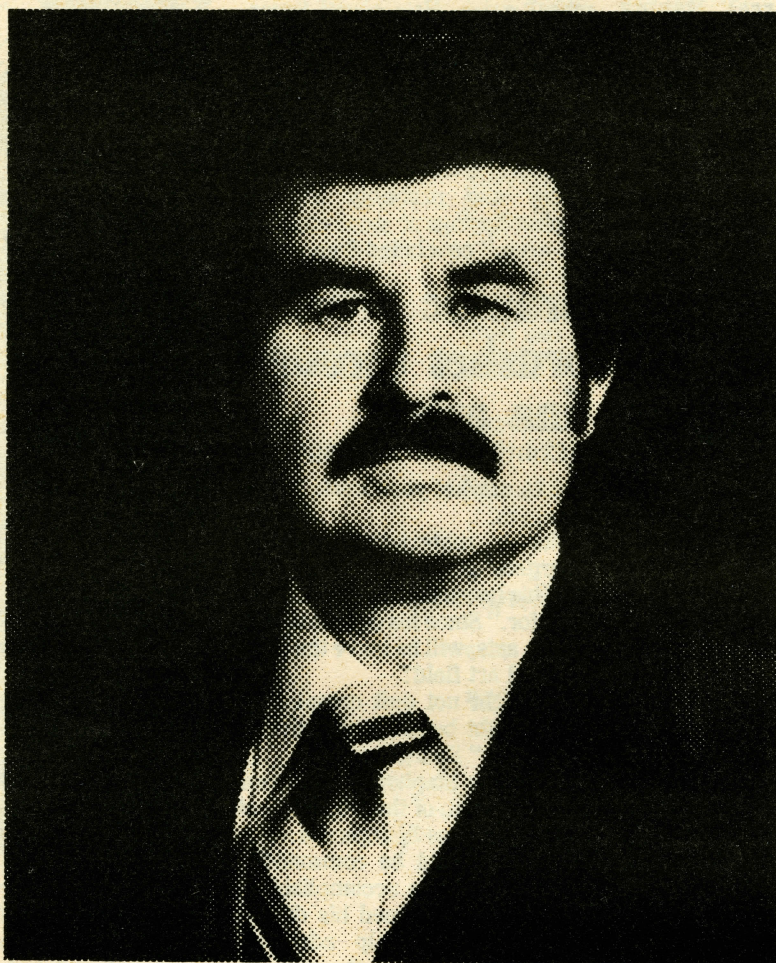
595-5500

4205 S. BROADWAY

INTERFIRST PLAZA - DOWNTOWN

MOST MAJOR CREDIT CARDS ACCEPTABLE

There's alot more to being sheriff than just wearing a badge.



Look around. Smith County is thriving, bustling with new business and new opportunities. And hard-on-the-heels of the booming economy are new and perplexing problems for county law enforcement officials.

The future of Smith County depends on leaders who are equipped to handle the mandates of progress. One candidate for sheriff has met this challenge. . . and his record proves it. J. B. Smith.

HIS RECORD

As sheriff, he implemented a number of wide-ranging programs:

- Round-the-clock protection by marked patrol cars and uniformed deputies
- Juvenile officers for young offenders, their parents and school systems
- A female deputy investigating crimes against women and children
- Road gangs or county prisoners assigned to clean up trash along county roads and on

Tyler's downtown square • An effective Reserve Force made up of volunteers donating up to 1500 hours a month to the county at no additional cost to the taxpayer

- Crime prevention and Awareness Programs stressing the prevention of rape, home burglaries and theft.

HIS TRAINING

To stride confidently into the future, the Smith County Sheriff's office needs a professional. J. B. Smith has the expertise and knowledge to oversee a complex law enforcement agency. To date, he has logged over 2,000 hours of intensive training and study. The list is long:

- Graduate of National FBI Academy, Quantico, Va.
- Graduate of University of Texas at Tyler, Bachelor of Science in Criminal Justice
- Graduate of the National Sheriff's Academy, University of Southern California, Los Angeles, Ca.
- Graduate of the

National Institute of Corrections, Boulder, Co.

- Graduate of Hostage Negotiations School - National Police Chief's Association, New Orleans, La.
- Highest certification obtainable from the Texas Commission on Law Enforcement, Officers, Standards and Education.

HIS PLANS

And aside from impressive credentials and experience, J. B. Smith offers Smith County a blueprint for the future. One that includes improved response time by uniformed patrol; a course designed for women on self-protection and the use of firearms; a drug abuse prevention program; and the reinstatement of road gangs.

But the most important reason to re-elect J. B. Smith as Sheriff of Smith County is his simple belief. We are all alike in the eyes of the Law - it plays no favorites.

RE-ELECT

JBS **SMITH**
The Sheriff
for All The People -
not a privileged few.

Music Department 'recharges' students with qualified teachers

By Debra Abbuhl

"Music tends to recharge the batteries..." Dr. R. Kenneth Muckelroy, chairman of the Department of Music, said.

Muckelroy came to UT Tyler in January 1974, when it was still called Tyler State College. He came here with the purpose of forming a music department for an upper division school.

The school was to provide state supported degree granting institutions for commuters in areas heavily populated by junior colleges. This makes it possible for students to go to a junior college and then transfer to an upper level school to continue their education in that field.

Today, the music department employs three full-time and seven part-time instructors. One full-time instructor, of course, is Muckelroy. He received his Bachelor of Music Education degree at Southwestern University of Georgetown. He received his Master of Music Literature and Doctor of Education degrees at the University of Houston.

Another full-time instructor is Daisy Highfill. She received her Bachelor of Music Education degree and her Master of Music Education degree at North Texas State University.

Highfill has had the honor of singing the Star Spangled Banner at the Aloha Bowl with Robert E. Lee in Hawaii. Her husband is the Robert E. Lee Band director. She leads and directs the campus

Madrigal singers.

The third full-time instructor is Dr. Chadwick Edwards. Edwards received his Bachelor of Science degree at Bridgewater College in Virginia and his Master of Music and Doctor of Education degrees at Arizona State University. Edwards teaches the music literature and music history classes, and choir and choral conducting. He conducts the campus Choral singers.

The seven part-time instructors teach a variety of things. Gerald Orr of Jacksonville received his Master of Music Education degree from the University of Oklahoma. He is a pianist.

Frank Kimlicko received his Bachelor of Music degree at North Texas State University, and his Master of Music degree at Southern Methodist University. Kimlicko gives private guitar lessons and is a full-time instructor at Tyler Junior College.

A third part-time instructor is Richard Herr. He gives music lessons on the organ. The lessons are given at the First Presbyterian Church, because the school does not have its own organ.

Another part-time instructor is Jim Yancy. He received his Bachelor of Science and Master of Art degrees at Stephen F. Austin University and teaches an opera class. Yancy is another instructor who teaches full-time at Tyler Junior College.

Camille Smith, received her Bachelor of Arts degree at U T Austin in English and Music, and her Master of Arts degree here at U.T. Tyler, gives piano lessons on campus and also gives lessons at Tyler Junior College and Henderson County Junior College.

The part-time instructor that teaches only during the summer semester is Dr. Doris Harrel who received her Bachelor of Science and Master of Science degrees from the Juilliard School of Music and her Doctor of Musical Arts degree from the University of Texas at Austin.

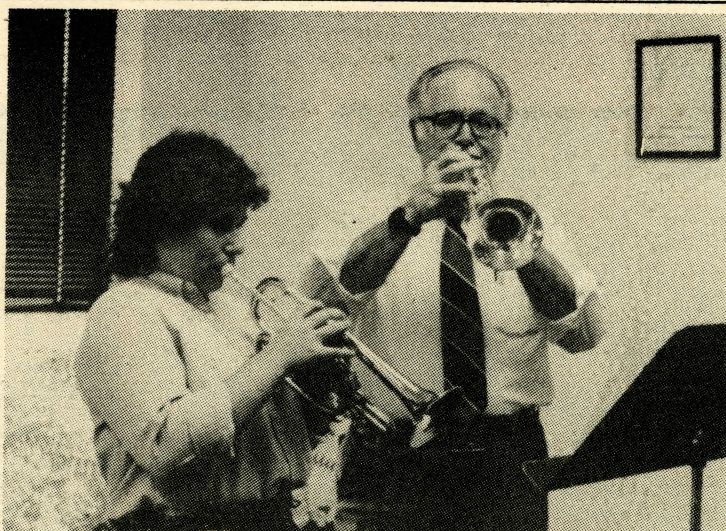
She teaches piano methods and literature, and also teaches the Suzuki method.

Scott Rhame, another part-time instructor, teaches guitar with emphasis in popular and contemporary guitar stylings. He received a Bachelor of Fine Arts degree at Stephen F. Austin University and a Master of Arts degree in music at UT Tyler.

There are a variety of classes offered in music at U T Tyler. The school offers music history, the stylistic and structural analysis of the study of music, music literature, the study of social and historical music of the Western Civilization; two different choirs one directed by Highfill and the other by Edwards, which periodically perform at colleges in the area.

Also there is a music theatre, the development and use

(Continued on page 20)



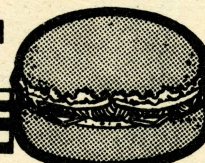
TRUMPET SOUNDS—Jeanna Smith, a student from Jacksonville, receives trumpet lessons from Dr. Kenneth Muckelroy, chairman, Music Department.

7:30a.m. — 7:30p.m. M-Th
7:30 a.m. — 5:00 p.m. Fridays

University Center

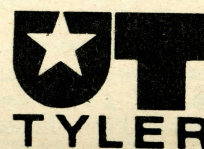
MESSAGE FROM UT SNACK BAR

**hamburger
TIME**



Buy a hamburger, fries
and medium size drink
for only \$2.45

Expires May 11, 1984



UT SNACK BAR



Authorized Dealer

AppleWorks.
Words, files and numbers easier than A.B.C.

The Apple™ IIe Personal Computer can now fun fully integrated software that lets you fly from one application to another with the greatest of ease.

It's called AppleWorks because it gives you the works:

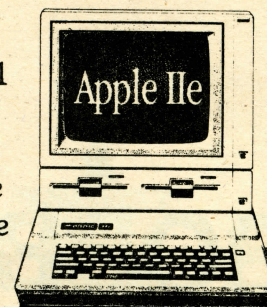
Word processing that shows you on-screen centering, margins, bullet-points, etcetera, just as they'll appear in print.

Electronic filing that quickly sorts through data and generates reports and mailing labels. And a sophisticated spreadsheet that's 999 rows deep by 127 columns wide.

Once you've learned the simple commands for one of these applications, you're already in command of the rest. Because they all work the same way.

We're offering this easy-to-use package for about half the price of other 3-in-1 programs. We also offer all the service, support and training you need to get the most of the advanced Apple products we sell.

So see us. For the Works.



COMPUTER PLACE
(Tom Thumb/Southpark Shopping Center)
1918 E. SE. Loop 323
Tyler, Tx. 592-8800

Apple and the Apple logo are trademarks of Apple Computer, Inc. © 1984 Apple Computer, Inc.

Tennis team goes to nationals

By John Berry

The Patriots, UT Tyler's tennis team, have advanced to the NAIA national tennis tournament.

The Patriots earned the right to go to the championship matches after defeating The University of Mary Hardin-Baylor, 6-3. The team will make its first appearance in the tournament after regular season play, which now stands at 15 wins and four losses.

The matches were played on a neutral site at Navarro College in Corsicana. Patriots taking wins were Jorge Jimenez, 6-0, 6-0; Ricardo Henning, 4-6, 6-5, 6-1; Robert Van Der Schans, 6-0, 7-5; and Peter Dixon, 6-3, 6-1.

Doubles wins were by Jimenez and Henning, 6-2, 6-0; and Van Der Schans and Dixon, 6-0, 6-0.

Taking singles losses were Kevin Clark, 2-6, 6-7; and Mike Ealem, 6-7, 2-6. Clark and Ealem lost in doubles, 4-6, 1-6.

The Patriots finished No. 1 among the five best independents in their division.

Of the win over Mary Hardin-Baylor, Coach Jason Morton said, "We're glad for the win, and we're ready for the nationals. We fully expect to take the win. We don't play for losses."

Prior to the match against Mary Hardin-Baylor, the Pats played two teams which typified the way the season had gone for them.

Against Paris Junior College,

April 25, they went 8-1. Against Tyler Junior College, one of the best teams in tennis competition, the Pats fell 1-8.

But of their first competitive season, all members of the team are proud of the results.

Jimenez said, "The first season out was a good learning experience for us."

And Van Der Schans expressed the other side of the net best when he said, "We had a good year, but we needed more school support. Turnouts to games by students were very poor. We're out here working, but not very many people come to watch."

Jimenez, No. 1 position on the team, is a business major who previously studied at North Texas State University. In 1982 he was the winner of the National Juniors Tournament.

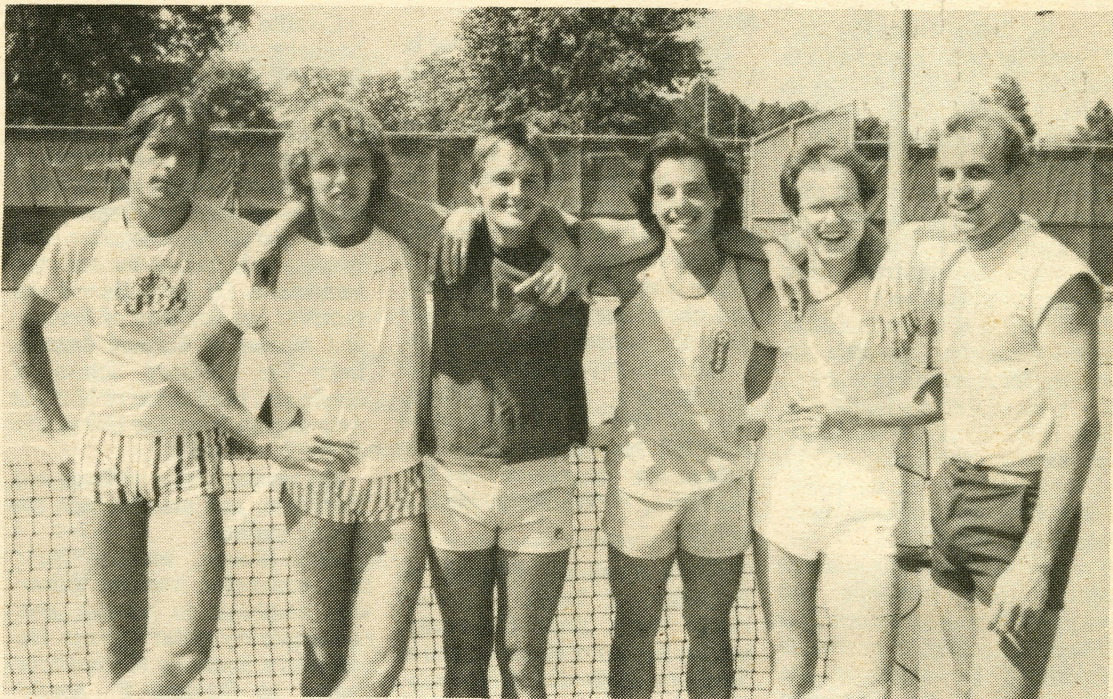
Ricardo Henning, No. 2 spot, is a computer science major and attended TJC. While at TJC, he won the National Championship, flight five.

"After UT Tyler, I plan to play the tennis circuit," he said.

Robert Van Der Schans, No. 3, is a management major and attended NTSU. In his early tennis career he was ranked among the top players in Holland in the 12- to 16-year-old class.

Peter Dixon, No. 4, is a computer science major and attended TJC. He is ranked twenty-third in Texas.

Kevin Clark, No. 5, is an accounting major who studied



PATRIOTS WIN—The tennis team is on its way to nationals. Players from left to right are Ricardo Henning, Peter Dixon, Robert Van Der Schans, Jorge Jimenez, Mike Ealem and Kevin Clark. [Photo by Terry Shirley.]

previously at Temple Junior College, or "TJC," as he called it.

Mike Ealem, No. 6, studied at NTSU and at TJC before coming here. Ealem is a pre-med student and played in area tennis tournaments before playing for the Patriots.

Buddy Ferrington also practices with the team though he is ineligible to play in the matches. "When I came here to play ten-

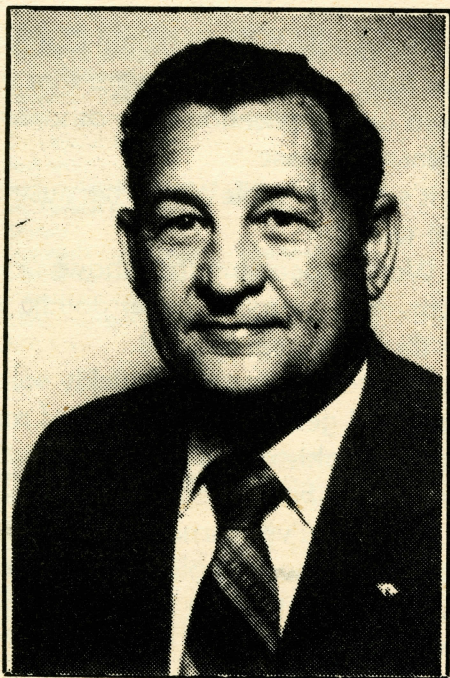
nis I didn't know if I had enough hours to be eligible to play or not. I needed 24 hours credit to play. But I found out too late that I only had 22.

"At registration, they were supposed to tell me how many hours I had and if I could play. The school didn't let me know until only a few days before the first match that I didn't have enough. "If they'd told me in time, I

could have taken some more physical education classes and made the team. I think it was the school's mistake for not checking the records in time. And I'm really disappointed because this semester was my only chance to play here."

After his studies here are complete, Farrington hopes to be a satellite player on the Association of Tennis Professionals circuit.

TO INSURE PROFESSIONAL LAW ENFORCEMENT



DEMOCRAT

ELECT

BOBBY MILLER

Smith County SHERIFF

★ **QUALIFIED**

★ **EXPERIENCED**

★ **DEPENDABLE**

★ **BOBBY MILLER**, has 23 yrs. of Law Enforcement experience - 10½ yrs. as a State Trooper with the Texas Dept. of Public Safety and 12 yrs. 9 mos. with the Smith County Sheriff's Dept.

★ **BOBBY MILLER**, was the first Deputy in the history of Smith County Sheriff's Dept. to be promoted to the rank of Lieutenant - in charge of the Warrant Division, Civil Process Division and the Day Shift Patrol.

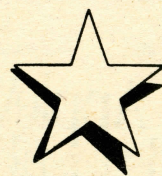
★ **BOBBY MILLER**, was the first Deputy in the history of Smith County Sheriff's Dept. to receive the "Advanced" Certification from the Texas Commission on Law Enforcement Officers Standards and Education - The highest certification awarded by said commission.

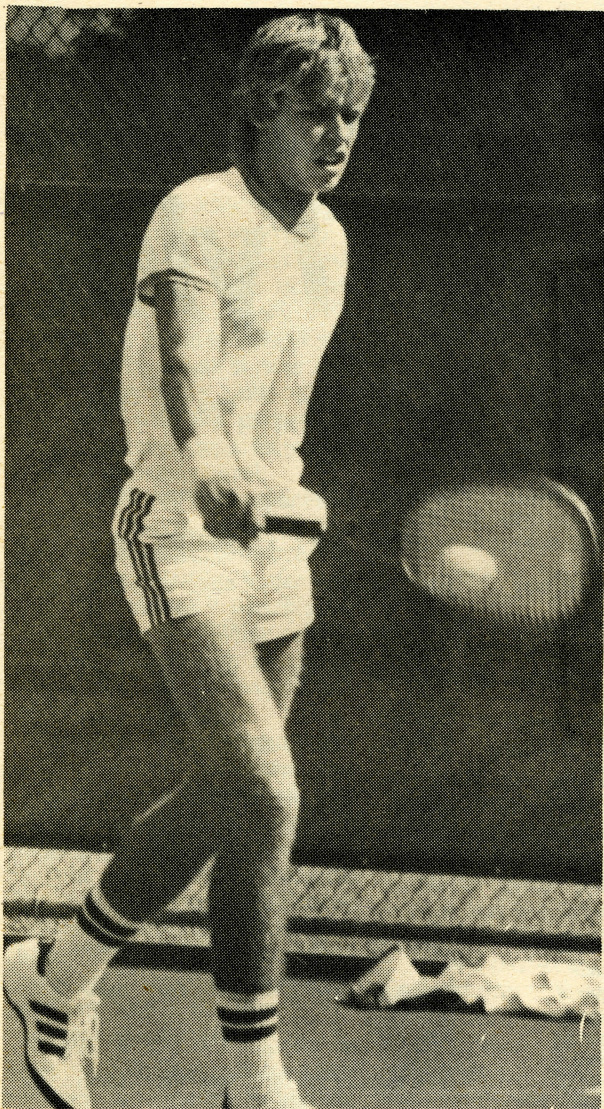
★ **BOBBY MILLER**, is a current member of the Smith County Peace Officers Association. - he served on the Board of Directors and the Committee on Constitution and By-Laws. He served on the Smith County Employees Association, and represented the Sheriff's Dept. on the Formulation of the Smith County Employees Rules and Regulations. He has served on the Smith County Bail Bond Board.

★ **BOBBY MILLER**, has instructed Deputies from two adjoining Sheriff Depts. on Civil Process procedures. he has worked in each and every department within the Smith County Sheriff's Dept. and has the working knowledge necessary to provide the proper leadership and training for the entire Sheriff's Dept.

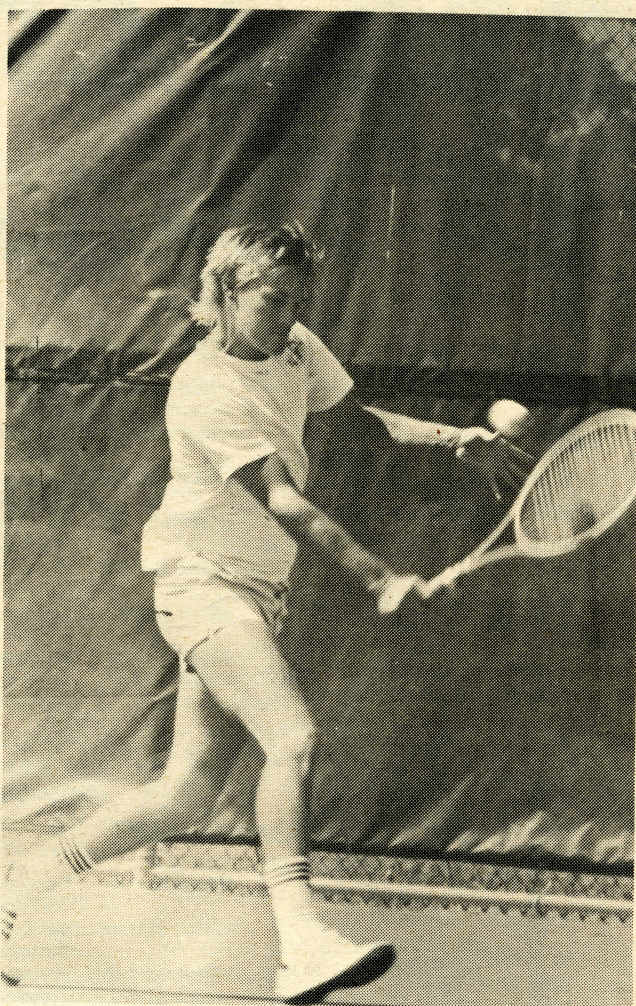
Although, investigations of major crimes would have priority he wants every call answered - regardless of the nature of the call.

★ **BOBBY MILLER**, plans to: continue the neighborhood crime watch program; improve call response time; improve public relations with all citizens and other Law Enforcement agencies within the county, and will stand on his motto of Courtesy, Service, and Protection.

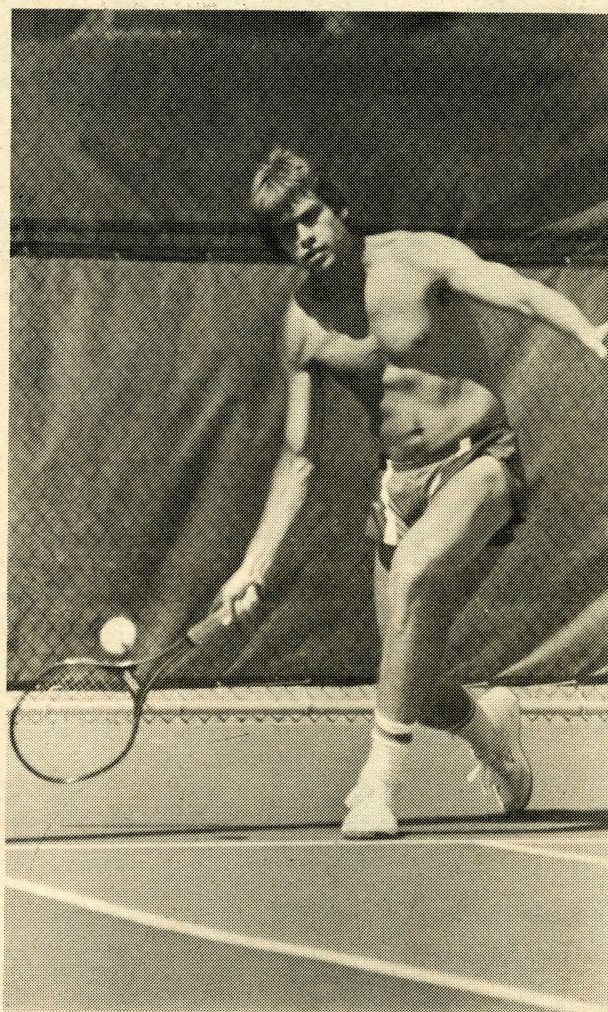




TEXAS' BEST—Peter Dixon steps into a backhand shot. A computer major, he is ranked 23rd in Texas.



DUTCH MASTER—Robert Van Der Schans, former NTSU student, was ranked among the top players in Holland.



MODEL PLAYER—Ricardo Henning goes for the low return during practice. He modeled in the Student Association fashion show.

**Good Luck
at Nationals!**

**Photos
by
Ken
Bryson**

**Good Luck
at Nationals!**

ELECT OSWALT COUNTY TAX COLLECTOR

QUALIFICATIONS

EDUCATION:

- | | | |
|-------------------|--------------------|---------------------|
| Master's Degree | - Hospital Admin. | - Baylor Univ. |
| Bachelor's Degree | - Business Admin. | - Univ. of Texas |
| | - Real Estate Mgt. | - Tyler Jr. College |

JOB EXPERIENCE: 26 Years

- Smith County Treasurer
- Hospital Administrator
- Comptroller
- Budget Officer
- Management Analyst
- Auditor
- Personnel Management

Native Texan

Korean & Vietnam War Veteran

Pol. Ad. Pd. By H. Oswalt, Rt. 8, Box 905, Tyler, Tx.

Fall Class Schedule

University of Texas at Tyler

SCHOOL OF BUSINESS ADMINISTRATION

Course & Section	Title	Time	Days	Room	Instructor
ACCOUNTING					
ACCT 3300-81	Survey of Accounting	5:40- 8:20	M(N)	BUS 108	Staff
ACCT 3301-01	Managerial Accounting	9:30-10:45	MW	BUS 104	Coplan
ACCT 3301-02	Managerial Accounting	8:00- 9:15	TTh	BUS 210	Coplan
ACCT 3301-81	Managerial Accounting	5:40- 8:20	M(N)	BUS 104	Staff
ACCT 3311-01	Intermediate Accounting I	12:30- 1:45	MW	BUS 151	Staff
ACCT 3311-02	Intermediate Accounting I	11:00-12:15	TTh	BUS 258	Wink
ACCT 3311-03	Intermediate Accounting I	2:20- 5:00	T	BUS 151	Wink
ACCT 3311-81	Intermediate Accounting I	5:40- 8:20	M(N)	BUS 106	Staff
ACCT 3312-01	Intermediate Accounting II	11:00-12:15	MW	BUS 151	Gordon
ACCT 3312-81	Intermediate Accounting II	5:40- 8:20	T(N)	BUS 210	Gordon
ACCT 3315-01	Cost Accounting	8:00- 9:15	TTh	BUS 151	Sellers
ACCT 3315-02	Cost Accounting	2:20- 5:00	W	BUS 151	Sellers
ACCT 3325-01	Income Tax I	8:00- 9:15	MW	BUS 152	Staff
ACCT 3325-02	Income Tax I	12:30- 1:45	TTh	BUS 151	Wink
ACCT 3325-81	Income Tax I	5:40- 8:20	Th(N)	BUS 151	Wink
ACCT 3326-01	Income Tax II	9:30-10:45	MW	BUS 151	Staff
ACCT 4310-81	C.P.A. Problems	5:40- 8:20	T(N)	BUS 151	Staff
ACCT 4320-01	Advanced Accounting	9:30-10:45	TTh	BUS 151	Coplan
ACCT 4325-01	Oil and Gas Accounting	8:00- 9:15	MW	BUS 151	Gordon
ACCT 4325-81	Oil and Gas Accounting	5:40- 8:20	M(N)	BUS 153	Gordon
ACCT 4330-01	Governmental and Not-for-Profit Accounting	9:30-10:45	MW	BUS 257	Staff
ACCT 4330-81	Governmental and Not-for-Profit Accounting	5:40- 8:20	T(N)	BUS 102	Staff
ACCT 4380-81	Auditing	5:40- 8:20	W(N)	BUS 151	Staff
ACCT 4385-01	Accounting Theory	11:00-12:15	TTh	BUS 151	Sellers
ACCT 5320-81	Accounting for Management Control	5:40- 8:20	M(N)	BUS 152	Sellers

ECONOMICS

ECON 3300-01	Economic Concepts	12:30- 1:45	TTh	BUS 104	Staff
ECON 3301-01	Economic Analysis	12:30- 1:45	MW	BUS 106	Kane
ECON 3301-02	Economic Analysis	11:00-12:15	TTh	BUS 104	Kane
ECON 3301-81	Economic Analysis	5:40- 8:20	Th(N)	BUS 104	Hayden
ECON 3311-01	Money, Banking, and the Federal Reserve System	11:00-12:15	MW	BUS 106	Staff
ECON 3311-81	Money, Banking, and the Federal Reserve System	5:40- 8:20	T(N)	BUS 108	Staff
ECON 3317-01	Aggregate Economics	9:30-10:45	TTh	BUS 106	Kane
ECON 4310-01	Central Banking and Monetary Policy	2:20- 5:00	M	BUS 152	Hayden
ECON 5320-81	Advanced Economic Analysis	5:40- 8:20	T(N)	BUS 152	Hayden

FINANCE

FINA 3311-01	Financial Management	11:00-12:15	MW	BUS 102	Staff
FINA 3311-02	Financial Management	9:30-10:45	TTh	BUS 102	Odom
FINA 3311-81	Financial Management	5:40- 8:20	M(N)	BUS 102	Odom
FINA 3312-01	Capital Budgeting	12:30- 1:45	TTh	BUS 106	Odom
FINA 3330-81	Investments	5:40- 8:20	W(N)	BUS 106	Staff
FINA 3390-01	Money and Capital Markets	9:30-10:45	MW	BUS 106	Kane
FINA 5320-01	Advanced Financial Management	2:20- 5:00	Th	BUS 152	Odom

GENERAL BUSINESS

GENB 3300-01	Small Business Management	12:30- 1:45	MW	BUS 102	Ussery
GENB 3301-01	Legal Environment & Social Responsibility	8:00- 9:15	TTh	BUS 158	Waits
GENB 3301-02	Legal Environment & Social Responsibility	8:00- 9:15	MW	BUS 102	Waits
GENB 3301-03	Legal Environment & Social Responsibility	12:30- 1:45	TTh	BUS 158	Staff
GENB 3301-81	Legal Environment & Social Responsibility	5:40- 8:20	W(N)	BUS 158	Staff
GENB 3305-01	Business Law	9:30-10:45	TTh	BUS 158	Waits
GENB 3305-81	Business Law	5:40- 8:20	T(N)	BUS 158	Waits
GENB 3315-81	Personal Finance	5:40- 8:20	Th(N)	BUS 102	Staff
GENB 3353-01	Statistics	12:30- 1:45	MW	HPR 135	Cranford
GENB 3353-02	Statistics	11:00-12:15	TTh	HPR 135	Cranford
GENB 3353-81	Statistics	5:40- 8:20	W(N)	HPR 135	Hendrickson
GENB 3370-01	Information & Communication Techniques	12:30- 1:45	MW	BUS 152	Staff
GENB 3370-02	Information & Communication Techniques	12:30- 1:45	TTh	BUS 152	Staff
GENB 3370-03	Information and Communication Techniques	2:20- 5:00	M	BUS 151	Staff
GENB 3370-04	Information and Communication Techniques	8:00- 9:15	TTh	BUS 152	Staff
GENB 3370-81	Information & Communication Techniques	5:40- 8:20	T(N)	BUS 106	Staff

GENB 4320-01	Quantitative Decision Making	9:30-10:45	MW	BUS 152	Goff
GENB 4320-02	Quantitative Decision Making	11:00-12:15	TTh	BUS 152	Goff
GENB 4320-81	Quantitative Decision Making	5:40- 8:20	Th(N)	BUS 106	Staff
GENB 4395-01	Managerial Strategy and Policy	11:00-12:15	MW	BUS 152	Ezell
GENB 4395-02	Managerial Strategy and Policy	9:30-10:45	TTh	BUS 152	Ezell
GENB 4395-81	Managerial Strategy and Policy	5:40- 8:20	M(N)	BUS 151	Ezell
GENB 5320-81	Quantitative Methods in Business	5:40- 8:20	Th(N)	BUS 152	Goff
GENB 5380-01	Management Consulting	2:20- 5:00	M	BUS 106	Goff
GENB 5395-01	Business Policy Formulation	2:20- 5:00	W	BUS 152	Ezell

Course & Section	Title	Time	Days	Room	Instructor
MANAGEMENT					
MANA 3311-01	Management of Organizations	9:30-10:45	MW	BUS 210	Ussery
MANA 3311-02	Management of Organizations	9:30-10:45	TTh	BUS 210	Ussery
MANA 3311-03	Management of Organizations	2:20- 5:00	T	BUS 104	Ussery
MANA 3311-81	Management of Organizations	5:40- 8:20	Th(N)	BUS 108	Staff
MANA 3315-01	Organizational Behavior	12:30- 1:45	MW	BUS 104	Young
MANA 3315-02	Organizational Behavior	12:30- 1:45	TTh	BUS 210	Young
MANA 3315-81	Organizational Behavior	5:40- 8:20	T(N)	BUS 104	Staff
MANA 3320-01	Personnel Administration	9:30-10:45	MW	BUS 108	Gullett
MANA 3320-81	Personnel Administration	5:40- 8:20	M(N)	BUS 154	Gullett
MANA 4305-01	Operations Management	9:30-10:45	MW	BUS 260	Staff
MANA 4305-81	Operations Management	5:40- 8:20	W(N)	BUS 108	Staff
MANA 4325-01	Wage and Salary Administration	11:00-12:15	MW	BUS 108	Gullett
MANA 4325-02	Wage and Salary Administration	8:00- 9:15	TTh	BUS 106	Gullett
MANA 4385-01	Organization Development	11:00-12:15	TTh	BUS 212	Young
MANA 5305-01	Production & Operation Management	2:20- 5:00	T	BUS 152	Staff
MANA 5320-81	Human & Organizational Behavior	5:40- 8:20	W(N)	BUS 102	Young

MARKETING

MARK 3311-01	Marketing & Society	8:00- 9:15	MW	BUS 104	Joyce
MARK 3311-02	Marketing & Society	8:00- 9:15	TTh	BUS 104	Joyce
MARK 3311-03	Marketing & Society	12:30- 1:45	MW	BUS 210	Hewett
MARK 3311-04	Marketing & Society	11:00-12:15	TTh	BUS 210	Hewett
MARK 3311-81	Marketing & Society	5:40- 8:20	W(N)	BUS 104	Staff
MARK 3325-81	Retailing	5:40- 8:20	Th(N)	BUS 257	Staff
MARK 4365-01	Sales Management	11:00-12:15	MW	BUS 104	Joyce
MARK 4390-01	Marketing Management	9:30-10:45	TTh	BUS 104	Hewett
MARK 4390-02	Marketing Management	5:40- 8:20	W	BUS 152	Hewett
MARK 5390-81	Administrative Marketing	5:40- 8:20	M(N)	BUS 158	Joyce

SCHOOL OF EDUCATION AND PSYCHOLOGY

Course & Section	Title	Time	Days	Room	Instructor
ALLIED HEALTH SCIENCE					
ALHS 3301-01	Health Ecology	9:30-10:45	TTh	PHE 124	Sears
ALHS 3302-01	Diseases of Man	11:00-12:15	TTh	PHE 124	Sears
ALHS 3350-81	Health Biometry	5:00- 6:15	TTh(N)	PHE 214	Staff
ALHS 4301-01	Allied Health Sciences Seminar (Oct. 6, 27, Nov. 17, Feb. 2, 23, March 16)	8:30- 4:00	S	PHE 110	Staff
ALHS 5315-81	Cardiovascular Disease and Rehabilitation	5:00- 7:40	T(N)	PHE 210	Ballard
ALHS 5322-81	Nutrition, Health and Disease	7:05- 9:45	M(N)	PHE 124	Lundberg
ALHS 5347-81	Epidemiology and Health Care Planning	4:15- 6:55	W(N)	PHE 110	Sears

BILINGUAL EDUCATION

EDBE 5310-81	Overview of Bilingual Education	5:40- 8:20	T(N)	SCI 205	Nava
EDBE 5338-81	Science, Math and Social Studies in Bilingual Education	5:40- 8:20	Th(N)	UC 225	Nava
ENGL 5375-81	Language Acquisition and Development of the Bilingual Learner	5:40- 8:20	M(N)	SCI 205	Davila
ENGL 5376-81	Reading and Language Arts in Bilingual Education	5:40- 8:20	W(N)	UC 225	Davila

Course & Section	Title	Time	Days	Room	Instructor
CLINICAL EXERCISE PHYSIOLOGY					
HOSE 5311-01	Clinical Instrumentation	2:00- 4:40	M	PHE 200	Staff
HOSE 5323-01	Medical Physiology: Cardiorespiratory	2:00- 3:15	TTh	PHE 200	Schwane
HOSE 5325-01	Medical Physiology: Renal-Endocrine	11:00-12:15	MW	PHE 200	Schwane

COUNSELING					
COUN 5315-01	Marriage Therapy I	10:00-12:40	Th	HPR 247	Sibley
COUN 5316-81	Marriage Therapy II	4:15- 6:55	M(N)	HPR 246	Mitchell

EARLY CHILDHOOD EDUCATION					
EDEC 3327-01	Survey of Early Childhood Education	3:30- 6:10	Th	ADM 326	Randel
EDEC 3335-01	Language and Cognitive Development of Young Children	9:30-10:45	MW	ADM 326	Randel
EDEC 3382-01	Teaching Mathematics to Young Children	12:30- 1:45	TTh	UC 211	Wagner
EDEC 4338-01	Curriculum Methods and Materials for Early Childhood Education	3:30- 6:10	T	ADM 326	Hicks
EDEC 4352-01	Student Teaching in the Kindergarten	TBA	TBA	TBA	Staff
EDEC 5302-81	Graduate Research Project in Early Childhood Education	TBA	TBA	TBA	Staff
EDEC 5325-81	Analysis and Application of Learning in Early Childhood Education	5:40- 8:20	M(N)	ADM 326	Hicks
EDEC 5335-51	Developmental Language Experiences for Young Children (Longview)	4:30- 7:10	W(N)	TBA	Randel
EDEC 5337-81	Creative Activities for the Young Child	5:40- 8:20	W(N)	ADM 326	Wagner
EDEC 5342-81	Development of the Young Child	5:40- 8:20	T(N)	SCI 204	Wagner
EDEC 5352-01	Graduate Practicum in the Kindergarten	TBA	TBA	TBA	Staff
EDEC 5395-01	Thesis	TBA	TBA	TBA	Staff
EDEC 5396-01	Thesis	TBA	TBA	TBA	Staff

EDUCATION					
EDUC 3311-01	Professional Decision Making	11:00-12:15	MW	ADM 326	Staff
EDUC 3311-03	Professional Decision Making	12:30- 1:45	MW	ADM 326	Staff
EDUC 3332-01	Generic Teaching Competencies for Elementary and Secondary Teachers - I	11:00-12:15	TTh	UC 211	Fischer, C.
EDUC 3332-03	Generic Teaching Competencies for Elementary and Secondary Teachers - I	2:00- 3:15	TTh	UC 211	Fischer, C.
EDUC 3332-04	Generic Teaching Competencies for Elementary and Secondary Teachers - I	2:00- 3:15	TTh	UC 225	Sowell
EDUC 3372-01	Teaching Language Arts in the Elementary School	8:00- 9:15	TTh	ADM 326	Fischer, O.
EDUC 3372-02	Teaching Language Arts in the Elementary School	9:30-10:45	TTh	ADM 326	Fischer, O.
EDUC 3382-01	Teaching Mathematics in the Elementary School	8:00- 9:15	TTh	UC 211	Sowell
EDUC 3382-02	Teaching Mathematics in the Elementary School	9:30-10:45	TTh	UC 211	Sowell
EDUC 4333-01	Generic Teaching Competencies for Elementary and Secondary Teachers - II	TBA	TBA	TBA	Hubble
EDUC 4353-01	Student Teaching in the Elementary School	TBA	TBA	TBA	Staff
EDUC 4354-01	Student Teaching in the Elementary School	TBA	TBA	TBA	Staff
EDUC 4355-01	Student Teaching in the Secondary School	TBA	TBA	TBA	Staff
EDUC 4356-01	Student Teaching in the Secondary School	TBA	TBA	TBA	Staff
EDUC 4373-01	Teaching Social Studies in the Elementary School	12:30- 1:45	TTh	ADM 359	Daniels
EDUC 4373-02	Teaching Social Studies in the Elementary School	2:00- 3:15	TTh	ADM 359	Daniels
EDUC 4383-01	Teaching Science in the Elementary School	12:30- 1:45	TTh	ADM 326	Staff
EDUC 4383-02	Teaching Science in the Elementary School	2:00- 3:15	TTh	ADM 326	Staff
EDUC 5301-81	Research Methods for the Behavioral Sciences	5:00- 7:40	T(N)	ADM 359	Sowell
EDUC 5302-81	Graduate Research Project in Curriculum and Instruction	TBA	TBA	TBA	Fischer, C.
EDUC 5305-81	Overview of Graduate Study in Education	5:40- 8:20	W(N)	UC 211	Nava
EDUC 5309-81	Educational Applications of Microcomputers	5:40- 8:20	M(N)	UC 224	Staff
EDUC 5309-82	Educational Applications of Microcomputers	5:40- 8:20	T(N)	UC 224	Fischer, C.
EDUC 5352-81	Curriculum Development: Early Childhood-Adult Education	5:40- 8:20	W(N)	ADM 359	Staff

EDUC 5353-81	Personalizing Instruction	5:40- 8:20	M(N)	UC 211	Rodgers
EDUC 5355-81	Analysis of Instructional Strategies	5:40- 8:20	T(N)	UC 211	Fischer, O.
EDUC 5357-81	Affective Personal Growth in Teaching	5:40- 8:20	M(N)	UC 225	Cox
EDUC 5358-81	Human Relations in the Classroom	5:40- 8:20	M(N)	ADM 359	Hubble
EDUC 5395-01	Thesis	TBA	TBA	TBA	Staff
EDUC 5396-01	Thesis	TBA	TBA	TBA	Staff

EDUCATIONAL ADMINISTRATION					
EDAD 5310-81	Introduction to School Administration	5:40- 8:20	Th(N)	HPR 134	Bowser
EDAD 5320-81	School Law	5:40- 8:20	M(N)	SCI 215	Bowser
EDAD 5330-81	The Principalship	4:15- 6:66	T(N)	UC 240	Bowser
EDAD 5333-81	Administration of Special Programs in Schools	5:40- 8:20	Th(N)	HPR 135	Lowery
EDAD 5340-81	The Administrator and Community Relations	7:05- 9:45	T(N)	UC 225	Bowser

EDUCATIONAL PSYCHOLOGY					
EPSY 3342-01	Educational Psychology: Development	11:00-12:15	MW	UC 211	Fisk
EPSY 3342-03	Educational Psychology: Development	12:30- 1:45	MW	UC 211	Fisk
EPSY 4343-01	Educational Psychology: Learning	9:30-10:45	TTh	ADM 359	Hubble
EPSY 4343-03	Educational Psychology: Learning	11:00-12:15	TTh	ADM 359	Hubble

HEALTH EDUCATION					
HLED 3360-01	School Health	12:30- 1:45	TTh	PHE 124	Sears
HLED 4315-01	Nutrition in Health and Performance	2:00- 3:15	MW	PHE 110	Sloan
HLED 4324-01	Mood Modifiers That Affect Behavior	12:30- 1:45	MW	PHE 124	Lundberg
HLED 4260-01	Stress/Sedentary Syndrome	9:30-10:45	MW	PHE 110	Ballard
HLED 4160-01	Stress/Sedentary Syndrome Laboratory	9:30-10:45	TTh	PHE 110	Ballard
HLED 4260-81	Stress/Sedentary Syndrome	5:00- 6:15	MW(N)	PHE 124	Staff
HLED 4160-81	Stress/Sedentary Syndrome Laboratory	5:00- 6:15	TTh(N)	PHE 124	Staff

HEALTH AND EXERCISE CORE COURSES					
HECC 4395-81	School and Community Recreation	5:00- 7:40	M(N)	PHE 110	Staff
HECC 5301-81	Laboratory Techniques	7:05- 9:45	M(N)	PHE 200	Staff
HECC 5317-81	Biometric Methods	5:40- 8:20	Th(N)	PHE 110	Staff

Course & Section	Title	Time	Days	Room	Instructor
KINESIOLOGY					
KINE 3101-01	Motor Control Laboratory	2:00- 3:15	M	PHE 220	McCoy
KINE 3101-02	Motor Control Laboratory	2:00- 3:15	W	PHE 220	McCoy
KINE 3101-03	Motor Control Laboratory	3:30- 4:45	M	PHE 220	McCoy
KINE 3101-04	Motor Control Laboratory	3:30- 4:45	W	PHE 220	McCoy
KINE 3112-01	Physiology of Exercise Laboratory	8:00-10:45	Th	PHE 214	Schwane
KINE 3201-01	Motor Control	12:30- 1:45	MW	PHE 214	McCoy
KINE 3211-01	Physiology of Exercise	8:00- 9:55	T	PHE 214	Schwane
KINE 3303-01	Motor Development	2:00- 3:15	TTh	PHE 214	Sellers
KINE 4333-01	Applied Kinesiological Anatomy	12:30- 1:45	TTh	PHE 110	Sloan
KINE 5306-81	Topics in Motor Performance	7:05- 9:45	Th(N)	PHE 220	McCoy
KINE 5313-81	Exercise Physiology I	7:05- 9:45	T(N)	PHE 200	Schwane
KINE 5314-01	Exercise for Special Populations	3:30- 6:10	T	PHE 110	Sloan
KINE 5315-81	Exercise Physiology II	5:00- 7:40	M(N)	PHE 214	Ballard
KINE 5335-81	Biomechanics I	7:05- 9:45	W(N)	PHE 110	Sloan

PHYSICAL EDUCATION					
PYED 3356-01	Health and Physical Education Programming for Early Childhood and Elementary Teachers	9:30-10:45	TTh	PHE 200	Sellers
PYED 4252-01	Curriculum Construction in School Physical Instruction	8:00- 9:15	MW	PHE 214	McCoy
PYED 4153-01	Laboratory in Curriculum Construction for the Elementary School	9:30-12:15	M	PHE 214	McCoy
PYED 4154-01	Laboratory in Curriculum Construction for the Secondary School	9:30-12:15	W	PHE 214	McCoy
PYED 4356-01	Topics in Motor Performance (Nov. 3, 17, Dec. 1, Jan. 26, Feb. 16, and March 23)	8:30- 4:00	S	PHE 124	Staff

PSYCHOLOGY					
PSYC 3232-81	Laboratory in Experimental Psychology	7:05- 8:45	Th(N)	UC 237	Buckman
PSYC 3301-01	Elements of Behavior	9:30-10:45	MW	UC 237	Lundberg
PSYC 3301-81	Elements of Behavior	7:05- 9:45	M(N)	UC 237	Staff
PSYC 3306-01	Social Psychology	11:00-12:15	TTh	UC 237	Geffner
PSYC 3331-81	Experimental Psychology	7:05- 9:45	T(N)	UC 237	Buckman

Course & Section	Title	Time	Days	Room	Instructor
PSYC 3354-01	Psychological Statistics	12:30- 1:45	TTh	UC 237	Buckman
PSYC 4311-01	Abnormal Psychology	9:30-10:45	TTh	UC 237	McClure
PSYC 4318-01	Physiological Psychology	11:00-12:15	MW	UC 237	Lundberg
PSYC 4321-81	The History of Psychology	7:05- 9:45	W(N)	UC 237	Staff
PSYC 4351-01	Developmental Psychology I	12:30- 1:45	MW	UC 237	McClure
PSYC 5308-51	Advanced Psychopathology I (Rusk)	TBA			Sibley
PSYC 5312-01	Counseling Theories and Psychotherapy	3:00- 5:40	M	UC 237	McClure
PSYC 5320-81	Advanced Study in Human Growth and Development	7:05- 9:45	W(N)	PHE 214	McClure
PSYC 5345-81	Group Processes	7:05- 9:45	M(N)	SCI 204	Mitchell
PSYC 5350-81	Clinical Neuropsychology	4:15- 6:55	Th(N)	UC 237	Mears
PSYC 5358-81	Neuropsychological Assessment II	4:15- 6:55	T(N)	UC 237	Geffner
PSYC 5361-81	Behavior Modification	4:15- 6:55	W(N)	UC 237	Buckman
PSYC 5366-81	Assessment of Individual Mental Ability I	4:15- 6:55	W(N)	BUS 210	Fisk
PSYC 5366-82	Assessment of Individual Mental Ability I	7:05- 9:45	W(N)	BUS 210	Fisk
PSYC 5380-51	Pro-seminars in Psychology (Rusk)	TBA			Sibley

READING

READ 4335-01	Reading: Overview and Application in the Elementary School	12:30- 1:45	TTh	UC 225	Staff
READ 4335-02	Reading: Overview and Application in the Elementary School	12:30- 1:45	TTh	UC 240	Staff
READ 4338-01	Middle and Secondary School Reading	11:00-12:15	TTh	UC 207	Bryant
READ 4350-01	Pre-School and Primary Reading	8:00- 9:15	MW	UC 207	Staff
READ 4350-02	Pre-School and Primary Reading	9:30-10:45	MW	UC 207	Staff
READ 4360-01	Reading Materials and Methods	8:00- 9:15	MW	UC 240	Wright
READ 4360-02	Reading Materials and Methods	9:30-10:45	MW	UC 240	Wright
READ 4364-01	Classroom Reading Diagnosis and Evaluation	8:00- 9:15	TTh	UC 240	Wright
READ 4366-01	Corrective Reading for the Classroom	3:30- 4:45	TTh	UC 225	Bryant
READ 4368-01	Current Issues in Secondary Reading	TBA	TBA	TBA	Wright
READ 4371-01	Secondary Reading Internship	TBA	TBA	TBA	Wright
READ 4374-01	Seminar in Reading	2:00- 4:40	W	UC 240	Martin
READ 5300-81	Inservice Workshop: ECRI	4:15- 6:55	Th(N)	UC 240	Armstrong
READ 5360-81	Advanced Developmental Reading	5:40- 8:20	W(N)	UC 240	Bryant
READ 5362-81	Reading Diagnosis	5:40- 8:20	M(N)	UC 240	Wright
READ 5364-51	Reading Research and Current Issues (Longview)	5:40- 8:20	M(N)		Martin
READ 5366-01	Practicum in Reading	TBA		TBA	Staff
READ 5368-81	Organization and Supervision of Reading Programs	5:40- 8:20	T(N)	BUS 257	Staff
READ 5388-51	Reading in the Secondary School (Athens)	4:15- 6:55	M(N)		Staff

SPECIAL EDUCATION

EDSP 4350-01	Survey of Exceptional Children	9:30-10:45	MW	UC 225	Moseley
EDSP 4357-01	Student Teaching in Special Education	TBA	TBA	TBA	Staff
EDSP 4361-01	Characteristics of Learners with Special Learning Needs	8:00- 9:15	MW	UC 225	Staff
EDSP 4365-01	Assessment of Learners with Special Learning Needs	2:00- 4:40	M	UC 225	Moseley
EDSP 4369-01	Educational Strategies in Teaching Children with Special Learning Needs	2:00- 4:40	W	UC 225	Staff
EDSP 4374-81	Instructional Methods and Materials for Exceptional Learners	4:15- 6:55	Th(N)	UC 207	Austin
EDSP 5300-01	Inservice Workshop: Meeting Needs of Special Learners in the Regular Classroom (Sept. 14-15, Oct. 12-13, Nov. 9-10, Dec. 7-8)	4:15- 6:55	F(N)	UC 237	Austin
EDSP 5300-81	Activities for Creative and Gifted Students	9:00-12:00	S		
EDSP 5350-81	Overview of Education of Exceptional Learners (Birth - 21)	1:00- 4:00	S		
EDSP 5352-81	Infants and Young Children with Special Learning Needs	5:40- 8:20	Th(N)	TBA	Elder
EDSP 5357-01	Practicum in Education of Exceptional Children	TBA		TBA	Moseley
EDSP 5380-81	Seminar - Characteristics of Exceptional Children	5:40- 8:20	W(N)	UC 207	Staff
EDSP 5382-81	Adolescents with Special Learning Needs	4:15- 6:55	Th(N)	HPR 131	Staff
EDSP 5364-01	Seminar - Assessment and Evaluation of Children with Special Learning Needs	2:00- 4:40	M	UC 225	Moseley
EDSP 5368-01	Seminar—Educational Strategies for Special Education	2:00- 4:40	W	UC 225	Staff
EDSP 5375-81	Communication Disorders of Children with Special Learning Needs	4:15- 6:55	T(N)	UC 207	Moseley

TECHNOLOGY

TECH 3311-01	Manufacturing Technology	8:00- 9:15	MW	HPR 251	Dunham
TECH 3311-51	Manufacturing Technology (Longview)	7:05- 9:45	TTh(N)		Dunham
TECH 3311-81	Manufacturing Technology	7:05- 9:45	M(N)	HPR 247	Gilbreath
TECH 3312-01	Industrial Maintenance	9:30-10:45	TTh	HPR 251	Dunham
TECH 3312-81	Industrial Maintenance	5:40- 6:55	MW(N)	HPR 251	Dunham
TECH 3313-01	Construction Technology	9:30-10:45	MW	HPR 251	Harbaugh
TECH 3313-81	Construction Technology	7:05- 9:45	M(N)	HPR 251	Staff
TECH 3313-51	Construction Technology (Longview)	7:05- 9:45	W(N)		Staff
TECH 3314-01	Transportation Technology	11:00-12:15	MW	HPR 251	Harbaugh
TECH 3314-81	Transportation Technology	7:05- 8:20	TTh(N)	HPR 251	Harbaugh
TECH 4303-81	Fire Loss Control	7:05- 9:45	M(N)	BUS 266	West
TECH 4305-81	Industrial Distribution	7:05- 9:45	T(N)	PHE 214	Kirksey
TECH 4320-01	Job Analysis Techniques	11:00-12:15	TTh	HPR 251	Garrison
TECH 4320-81	Job Analysis Techniques	5:40- 6:55	TTh(N)	HPR 251	Garrison
TECH 4330-01	Occupational Safety and Health	8:00- 9:15	TTh	HPR 251	Gilbreath
TECH 4330-81	Occupational Safety and Health	7:05- 9:45	W(N)	HPR 251	Gilbreath
TECH 4351-81	Topics in Industrial Studies: Petroleum Technology	7:05- 9:45	W(N)	SCI 204	Fairbanks
TECH 5303-81	Research Reading and Current Trends in Industrial Education and Technology	7:05- 9:45	M(N)	HPR 246	Allen
TECH 5329-81	Trends in Industry	7:05- 9:45	W(N)	HPR 247	Mayfield
TECH 5346-81	Controlling the Industrial Environment	5:40- 6:55	MW(N)	HPR 247	Gilbreath
TECH 5328-81	Topics in Technical Programs: The Manager and Automated Systems	7:05- 9:45	T(N)	HPR 247	Garrison

VOCATIONAL EDUCATION

EDVO 4310-81	Sponsoring Student Activity Programs	7:05- 9:45	T(N)	HPR 246	Mayfield
EDVO 4313-51	Industrial Education Laboratory Organization and Management (Kilgore)	3:00- 5:40	Th		Allen
EDVO 4325-81	Accident Prevention for Technical Programs	8:30- 9:45	TTh(N)	HPR 251	Harbaugh
EDVO 4331-81	Goals and Objectives for Technical-Vocational Programs	7:05- 9:45	W(N)	HPR 246	Allen
EDVO 4333-51	Human Relations for Industrial Teachers (Athens)	4:00- 6:40	M(N)		Garrison
EDVO 5310-81	Sponsoring Student Activity Programs	7:05- 9:45	T(N)	HPR 246	Mayfield
EDVO 5313-51	Organization and Management of Instructional Environment (Kilgore)	3:00- 5:40	Th		Allen
EDVO 5333-51	Human Relations for Vocational Teachers (Athens)	4:00- 6:40	M(N)		Garrison

SCHOOL OF LIBERAL ARTS

ART

ART. 3315-01	Crafts for the Elementary Teacher	2:00- 4:40	M	HPR 248	Stephens
ART. 3315-02	Crafts for the Elementary Teacher	2:00- 4:40	W	HPR 248	Stephens
ART. 3321-01	Life Drawing II	12:30- 3:15	MW	HPR 274	Bridges
ART. 3325-81	Advertising Art	5:40- 8:20	M(N)	HPR 248	Dobbs
ART. 3330-01	Art in Contemporary Living	2:00- 4:40	T	HPR 248	Bain
ART. 3375-01	Graphic Arts	3:30- 6:15	MW	HPR 275	Bridges
ART. 4192-01	Senior Exhibition	8:00- 9:15	Th	HPR 274	Van Horn
ART. 4311-01	Advanced Painting	9:30-12:15	MW	HPR 252	Stephens
ART. 4320-01	Advanced Drawing	9:30-12:15	TTh	HPR 274	Van Horn
ART. 4343-01	Greek and Roman Art	8:00- 9:15	MW	HPR 248	Brown
ART. 4345-01	Renaissance Art	12:30- 1:45	TTh	HPR 248	Weaver
ART. 4379-01	Advanced Sculpture	2:00- 4:40	TTh	SCI 232	Van Horn
ART. 5310-51	Graduate Studio Problems in Drawing and Painting (Longview Museum)	4:15- 6:55	M(N)		Coggin
ART. 5310-52	Graduate Studio Problems in Drawing and Painting (Longview Museum)	TBA			Coggin
ART. 5310-81	Graduate Studio Problems in Drawing and Painting	5:40- 8:20	T(N)	HPR 252	Stephens
ART. 5310-82	Graduate Studio Problems in Drawing and Painting	5:40- 8:20	Th(N)	HPR 248	Nunn
ART. 5312-81	Graduate Studio Problems in Graphics and Photography	5:40- 8:20	T(N)	HPR 275	Bridges

* Students at the Longview Museum must be registered for both sections of ART 5310-51 and ART 5310-52 and be currently teaching in a school.

CRIMINAL JUSTICE

CRIJ 3306-81	Recognition and Handling of Abnormal Persons	7:05- 9:45	M(N)	BUS 210	Staff
CRIJ 3311-01	Management for Criminal Justice I	9:30-10:45	TTh	BUS 202	Rich
CRIJ 3311-81	Management for Criminal Justice I	5:40- 6:55	TTh(N)	BUS 202	Staff
CRIJ 3320-01	Criminology and Criminal Typologies	11:00-12:15	MW	BUS 202	Staff

POLS 3300-01	United States Constitutional Development	9:30-10:45	MW	BUS 205	Bennett
POLS 3300-81	United States Constitutional Development	7:05- 9:45	M(N)	BUS 204	Lefevre
POLS 3301-01	Texas Government and Politics	12:30- 1:45	TTh	BUS 208	Stanley

Course & Section	Title	Time	Days	Room	Instructor
POLS 3301-81	Texas Government and Politics	7:05- 9:45	W(N)	BUS 208	Nolan
POLS 3330-01	American Political Parties	11:00-12:15	MW	BUS 205	Stanley
POLS 3340-01	Introduction to Public Administration	12:30- 1:45	MW	BUS 204	Bennett
POLS 3350-01	Western Political Theory: Antiquity to Machiavelli	9:30-10:45	TTh	BUS 204	Lefevre
POLS 3372-01	The Soviet Political System	2:00- 4:40	W	BUS 259	Stanley
POLS 4345-81	Public Policy Analysis	7:05- 9:45	T(N)	BUS 259	Lefevre
POLS 4349-01	State and Local Planning	11:00-12:15	TTh	BUS 204	Bennett
POLS 4370-01	Internship Program	TBA	TBA	TBA	Bennett
POLS 4371-01	Internship Program	TBA	TBA	TBA	Bennett
POLS 5310-81	Seminar in Political Science	8:00- 8:40	M(N)	BUS 259	Stanley
POLS 5331-81	Public Administration and Management	8:00- 8:40	W(N)	BUS 257	Bennett

SOCIOLOGY

SOCI 3315-01	Social Stratification	9:30-10:45	TTh	BUS 205	Martin
SOCI 3321-01	Multi-Cultural Studies	11:00-12:15	MW	BUS 208	Jedlicka
SOCI 3321-02	Multi-Cultural Studies	2:00- 3:15	TTh	BUS 205	Jedlicka
SOCI 3341-01	Marriage and Family Life	11:00-12:15	TTh	BUS 208	Jedlicka
SOCI 3345-81	Medical Sociology	8:00- 8:40	Th(N)	BUS 205	Jedlicka
SOCI 3386-81	Social Research Methods	8:00- 8:40	T(N)	BUS 205	Victor
SOCI 4305-01	Juvenile Delinquency (Same as CRIJ 4305)	8:00- 9:15	MW	BUS 208	Victor
SOCI 4311-01	Majority-Minority Relations	9:30-10:45	MW	BUS 204	Victor
SOCI 4320-81	Introduction to Social Work	6:00- 8:40	Th(N)	BUS 263	Land
SOCI 4330-81	Social Services	6:00- 8:40	M(N)	BUS 208	Land
SOCI 4370-01	Internship Program	TBA	TBA	TBA	Bennett
SOCI 4371-01	Internship Program	TBA	TBA	TBA	Bennett
SOCI 5307-81	Seminar in Metropolitan Problems	6:00- 8:40	T(N)	BUS 208	Martin
SOCI 5321-81	Intercultural Studies	6:00- 8:40	M(N)	BUS 258	Martin
SOCI 5321-82	Intercultural Studies	4:15- 6:55	W(N)	BUS 208	Martin
SOCI 5380-81	Seminar in Sociological Theory	7:05- 9:45	W(N)	BUS 204	Victor

SPANISH

SPAN 3300-01	Conversation and Composition	2:00- 3:15	TTh	BUS 258	Glascock
SPAN 3355-81	Survey of Spanish Literature Since 1700	4:15- 6:55	M(N)	BUS 205	Glascock
SPAN 4360-81	Special Topics in Spanish Literature and Language: Spanish For Health Personnel	6:00- 8:40	T(N)	BUS 258	McAndrews
SPAN 4360-82	Special Topics in Spanish Literature and Language: Spanish for Health Personnel	6:00- 8:40	Th(N)	BUS 258	McAndrews
SPAN 4360-83	Special Topics in Spanish Literature and Language: Spanish for Bilingual Teachers - I	4:30- 5:45	MW(N)	BUS 257	Staff
SPAN 4360-84	Special Topics in Spanish Literature and Language: Spanish for Bilingual Teachers - II	4:30- 5:45	TTh(N)	BUS 259	Glascock

SPEECH

SPCH 3320-81	Advanced Interpersonal Communication	5:40- 8:20	M(N)	BUS 212	Freeman
SPCH 3320-51	Advanced Interpersonal Communication (Longview)	6:00- 8:40	M(N)		Sorber
SPCH 3321-01	Business and Professional Speaking	9:30-10:45	MW	BUS 258	Schmidt
SPCH 3322-01	Small Group Communication	9:30-10:45	TTh	BUS 212	Freeman
SPCH 3325-01	Persuasive Communication	2:00- 3:15	MW	BUS 258	Schmidt
SPCH 4302-01	Oral Interpretation of Dramatic Literature	11:00-12:15	MW	BUS 212	Staff
SPCH 4326-51	Studies and Practices in Advanced Public Speaking (Longview)	6:00- 8:40	Th(N)		Sorber
SPCH 4331-01	Intercultural Communication	12:30- 1:45	TTh	BUS 205	Freeman
SPCH 4331-02	Intercultural Communication	12:30- 1:45	TTh	BUS 212	Schmidt
SPCH 5325-81	Public Communication	5:40- 8:20	T(N)	BUS 212	Schmidt
SPCH 5340-81	Seminar in Intercultural Communication	5:40- 8:20	W(N)	BUS 212	Freeman

SCHOOL OF SCIENCES AND MATHEMATICS

BIOLOGY

BIOL 3320-01	Human Physiology	8:30- 9:45	MF	SCI 250	Ford
BIOL 3320-81	Human Physiology	4:15- 5:30	TTh(N)	SCI 140	Ford
BIOL 3121-01	Human Physiology Laboratory	10:00-12:50	M	SCI 129	Staff
BIOL 3121-02	Human Physiology Laboratory	10:00-12:50	F	SCI 129	Staff
BIOL 3121-03	Human Physiology Laboratory	1:15- 4:05	F	SCI 129	Staff
BIOL 3121-81	Human Physiology Laboratory	5:40- 8:30	T(N)	SCI 129	Staff
BIOL 3328-01	Pathophysiology I	8:00- 9:15	MF	SCI 248	Staff

Course & Section	Title	Time	Days	Room	Instructor
BIOL 3332-01	Genetics	8:00- 9:15	TTh	SCI 140	Killebrew
BIOL 3332-81	Genetics	5:00- 6:15	TTh(N)	SCI 250	Killebrew
BIOL 3345-01	Plant Morphology	9:30-10:45	MW	SCI 125	Sherrod
BIOL 3146-01	Plant Morphology Laboratory	2:00- 5:00	W	SCI 125	Sherrod
BIOL 3336-01	Ecology	11:00-12:15	MW	SCI 140	Killebrew
BIOL 3137-01	Ecology Laboratory	2:00- 5:00	M	SCI 128	Killebrew
BIOL 4114-01	Seminar	12:30- 1:45	W	SCI 140	Stewart
BIOL 4350-81	Immunology	6:00- 7:15	MW(N)	SCI 140	Nash
BIOL 4151-01	Immunology Lab	2:00- 5:00	W	SCI 132	Stewart
BIOL 5390-01	Ethology	11:00-12:15	TTh	SCI 140	Ford
BIOL 5191-01	Ethology Laboratory	1:15- 4:05	Th	SCI 129	Ford

CHEMISTRY

CHEM 3107-01	Pharmacology I	7:30- 8:20	M	SCI 247	Moss
CHEM 3108-01	Pharmacology II	7:30- 8:20	T	SCI 205	Moss
CHEM 3310-01	Analytical Chemistry	11:00-12:15	MW	HPR 134	Riddle
CHEM 3111-01	Analytical Chemistry Laboratory	2:00- 5:00	M	HPR 146	Riddle
CHEM 3342-01	Organic Chemistry I	9:30-10:45	TTh	HPR 145	McClagherty
CHEM 3143-01	Organic Chemistry I Laboratory	1:00- 5:00	T	HPR 153	McClagherty
CHEM 3352-01	Physical Chemistry I	9:30-10:45	MW	HPR 145	McClagherty
CHEM 3153-01	Physical Chemistry I Laboratory	1:00- 5:00	Th	HPR 156	McClagherty
CHEM 4330-01	Inorganic Chemistry	8:00- 9:15	TTh	HPR 145	Riddle
CHEM 4334-01	Biochemistry	9:30-10:45	TTh	SCI 140	Stewart
CHEM 4135-01	Biochemistry Laboratory	2:00- 5:00	T	SCI 132	Stewart
CHEM 4191-01	Seminar	2:00- 3:00	W	SCI 140	Riddle

COMPUTER SCIENCE

COSC 3302-01	PLI Programming Applications	12:30- 1:45	MW	HPR 131	Whitson
COSC 3308-01	Personal Computing	8:00- 9:15	MW	HPR 135	Staff
COSC 3308-02	Personal Computing	2:00- 3:15	TTh	HPR 135	Staff
COSC 3308-81	Personal Computing	5:40- 8:20	M(N)	HPR 135	Staff
COSC 3311-01	Fortran Applications Programming	2:00- 3:15	MW	HPR 131	Staff
COSC 3311-02	Fortran Applications Programming	8:00- 9:15	TTh	HPR 135	Staff
COSC 3311-03	Fortran Applications Programming	12:30- 1:45	TTh	HPR 131	Staff
COSC 3311-81	Fortran Applications Programming	5:40- 8:20	W(N)	HPR 131	Staff
COSC 3312-01	Assembly Language Programming	9:30-10:45	TTh	HPR 135	Pittman
COSC 3322-01	Computer Organization	12:30- 1:45	TTh	HPR 135	Pittman
COSC 3330-01	Simulation and Scientific Applications	11:00-12:15	TTh	HPR 131	Whitson
COSC 3365-01	Commercial Applications Programming	11:00-12:15	MW	HPR 135	Baker
COSC 3365-81	Commercial Applications Programming	5:40- 8:20	T(N)	HPR 135	Baker
COSC 4321-01	Data Structures	12:30- 1:45	MW	HPR 134	Rainwater
COSC 4350-01	Advanced Applications	2:00- 3:15	MW	HPR 135	Baker
COSC 4375-01	Computer System Programming	11:00-12:15	MW	HPR 131	Pittman
COSC 4377-01	Compiler Techniques	9:30-10:45	MW	HPR 131	Whitson
COSC 5306-81	Personal Computing	5:40- 8:20	W(N)	HPR 134	Rainwater
COSC 5314-81	Computer Assisted Instruction	5:40- 8:20	M(N)	HPR 134	Rainwater
COSC 5315-81	Microcomputer System Applications	5:40- 8:20	M(N)	HPR 131	Baker
COSC 5330-81	Operating Systems	5:40- 8:20	W(N)	SCI 248	Pittman
COSC 5340-81	Programming Languages	5:40- 8:20	T(N)	SCI 140	Whitson

MATHEMATICS

MATH 3304-01	Multivariate Calculus	11:00-12:15	MW	SCI 248	Keagy
MATH 3310-01	Mathematical Analysis	11:00-12:15	TTh	HPR 134	Staff
MATH 3310-81	Mathematical Analysis	5:40- 8:20	T(N)	HPR 131	Staff
MATH 3325-01	Foundations of Mathematics	9:30-10:45	MW	HPR 135	Morris
MATH 3325-02	Foundations of Mathematics	9:30-10:45	TTh	HPR 134	Morris
MATH 3350-81	Statistical Methods in Research	4:20- 7:00	M(N)	SCI 248	Morris
MATH 3353-01	Statistics	12:30- 1:45	MW	HPR 135	Cranford
MATH 3353-02	Statistics	11:00-12:15	TTh	HPR 135	Cranford
MATH 3353-81	Statistics	5:40- 8:20	W(N)	HPR 135	Hendrickson
MATH 3381-01	Numerical Analysis	2:00- 3:15	MW	HPR 134	Keagy
MATH 4350-01	Theory of Probability	12:30- 1:45	TTh	HPR 134	Morris
MATH 5305-81	Logic and Foundations	5:40- 8:20	T(N)	HPR 134	Cranford
MATH 5341-81	Real Analysis I	5:40- 8:20	M(N)	SCI 250	Keagy

MEDICAL TECHNOLOGY

MEDT 4601-01	Immunohematology	8:30- 4:30	M-F	SCI 124	Pundt
	Clinical	8:00- 4:30	M-F	TBA	Pundt
MEDT 4613-01	Hematology	8:30- 4:00	M-F	SCI 124	Koukl
	Clinical	6:30- 3:00	M-F	TBA	Koukl
MEDT 4309-01	Diagnostic Immunology	8:00- 4:30	M-F	SCI 124	Pundt
	Clinical	6:30- 3:00	M-F	TBA	Koukl

NURSING

NURS 3205-01	Nursing Concepts and Theories I	3:00- 4:50	Th	SCI 205	Riemen
NURS 3205-02	Nursing Concepts and Theories I	3:00- 4:50	Th	SCI 204	Staff
NURS 3210-01	Nursing Process I	1:00- 2:00	M	SCI 215	Smerke
	Clinical	2:00- 5:00	M	SCI 222	Smerke
NURS 3210-02	Nursing Process I	1:00- 2:00	M	SCI 215	Smerke
	Clinical	2:00- 5:00	M	SCI 218	Staff
NURS 3401-01	Nursing Process II	2:00- 3:50	T	SCI 247	Brown
	Clinical	8:00- 1:30	T	TBA	Brown
NURS 3401-02	Nursing Process II	2:00- 3:50	T	SCI 247	Brown
	Clinical	8:00- 1:30	W	TBA	Brown
NURS 3401-03	Nursing Process II	2:00- 3:50	T	SCI 247	Brown
	Clinical	8:00- 1:30	Th	TBA	Staff
NURS 3403-01	Nursing Competencies	2:00- 3:50	W	SCI 247	Rowe
	Clinical	8:00- 1:30	T	SCI 218	Rowe

Course & Section	Title	Time	Days	Room	Instructor
NURS 3403-02	Nursing Competencies Clinical	2:00- 3:50	W	SCI 247	Rowe
NURS 3403-03	Nursing Competencies Clinical	8:00- 1:30	W	SCI 218	Staff
NURS 3611-01	Nursing Process III Laboratory	2:00- 3:50	W	SCI 247	Rowe
	Clinical	8:00- 1:30	Th	SCI 218	Rowe
NURS 3611-02	Nursing Process III Laboratory	9:00-11:50	T	SCI 205	Campbell
	Clinical	2:30- 6:00	T	SCI 218	Campbell
	Clinical	1:00- 6:00	W	TBA	Campbell
	Clinical	6:45- 2:00	Th	TBA	Campbell
NURS 3613-01	Nursing Process IV Clinical	9:00-11:50	T	SCI 205	Campbell
	Clinical	2:30- 6:00	T	SCI 218	Campbell
	Clinical	1:00- 6:00	W	TBA	Campbell
	Clinical	6:45- 2:00	Th	TBA	Campbell
NURS 3613-02	Nursing Process IV Clinical	12:00- 2:50	M	SCI 250	Bockmon
	Clinical	8:00- 3:00	W	TBA	Bockmon
	Clinical	8:00- 3:00	Th	TBA	Bockmon
NURS 4621-01	Nursing Process V Clinical (Longview)	12:00- 2:50	M	SCI 250	Bockmon
	Clinical	8:00- 3:00	W	TBA	Bockmon
	Clinical	8:00- 3:00	Th	TBA	Bockmon
NURS 4621-02	Nursing Process V Clinical (Longview)	1:00- 3:50	M	SCI 248	Southerland
	Clinical	6:45- 2:00	W	TBA	Southerland
	Clinical	6:45- 2:00	Th	TBA	Southerland
	Clinical	1:00- 3:50	M	SCI 248	Southerland
	Clinical	6:45- 2:00	W	TBA	Southerland

Course & Section	Title	Time	Days	Room	Instructor
NURS 4623-01	Clinical (Longview) Nursing Process VI	6:45- 2:00	Th	TBA	Southerland
	Clinical	9:00-11:50	M	SCI 204	Munoz
	Clinical	12:00- 6:00	W	TBA	Munoz
NURS 4623-02	Clinical Nursing Process VI	6:45- 2:15	Th	TBA	Munoz
	Clinical	9:00-11:50	M	SCI 204	Munoz
	Clinical	12:00- 6:00	W	TBA	Munoz
NURS 4233-01	Clinical Nursing Concepts and Theories II	6:45- 2:15	Th	TBA	Munoz
	Clinical	3:00- 4:50	M	SCI 205	Rieman
NURS 4233-02	Clinical Nursing Concepts and Theories II	3:00- 4:50	M	SCI 204	Staff
NURS 4931-01	Advanced Nursing Process Seminar	9:00-11:50	M	SCI 215	McBryde
	Clinical (Leadership)	2:00- 2:50	M	SCI 215	McBryde
	Clinical	TBA	T	TBA	McBryde
	Clinical	TBA	W	TBA	McBryde
	Clinical	TBA	Th	TBA	McBryde
NURS 4931-02	Advanced Nursing Process Seminar	9:00-11:50	M	SCI 247	Galvan
	Clinical (Adv. M-S)	2:00- 2:50	M	SCI 247	Galvan
	Clinical	1:00- 7:00	W	TBA	Galvan
	Clinical	6:45- 1:45	Th	TBA	Galvan

U.S. revolutionary terrorism target of Reagan administration in Congress

(Continued from page 2)

the Summer Olympics in Los Angeles and political conventions in Dallas and San Francisco, authorities are growing worried. No longer is terrorism confined to some distant banana republic. Terrorists are now determined to bring their guerrilla warfare to the contiguous 48 states. They no doubt were greatly encouraged in their efforts when they saw the ease with which the U.S. Capitol Building was blasted last November.

What can be done to combat

this swelling tide of terrorism? Since the early 1970s leftists in the government have been weakening the internal security network of the U.S. through devices such as the Freedom of Information Act and the Privacy Act.

Authorities on terrorism say there is but one way to handle domestic terrorism—intelligence capabilities that allow the U.S. to be knowledgeable of terrorists intentions before they are able to ply their bloody trade.

The senior editor of "Reader's Digest," Eugene Methvin, a noted writer of articles on terrorism, said, "There is no single way to prevent an outbreak of terrorism in the United States. But if I were asked to name just one thing we could do to help prevent terrorist incidents, it would be, without a doubt, improve domestic intelligence."

President Reagan, in a statement accompanying a package of anti-terrorism legislation he introduced this past week said, "I

am determined that my administration will do whatever is necessary to reduce the incidence of terrorism against us anywhere in the world and to see that the perpetrators of terrorist acts are brought to justice."

His proposals would establish federal jurisdiction in cases where hostages are taken, give rewards and protection to informants, tighten laws dealing with aircraft sabotage, and imprison Americans up to 10 years if they recruit, train, supply or solicit people to engage in terrorism in the U.S.

It's high time that we begin to fight back against these vicious forces seeking to advance the cause of revolution in our country. It would do us all well to remember what the founder of Marxism, Karl Marx, said, "There is only one way to shorten the murderous death of agonies of the old society, only one way to shorten the bloody birth pangs of the new society...only one means...revolutionary terrorism."



PRESIDENTIAL HOPEFUL—Senator Gary Hart prepares himself to meet the press and Tyler supporters. [Photo by Janet Price]

UNIVERSITY CENTER SNACK BAR

Open for your convenience

M-TH

7:30 a.m. — 7:30 p.m.

Fridays

7:30 a.m. — 5:00 p.m.



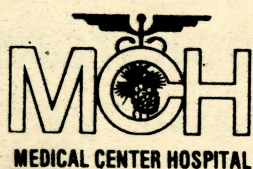
GN's & RN's...
GROW WITH PRIDE

AT MEDICAL CENTER HOSPITAL

Medical Center Hospital is now accepting applications for its 16-week clinical nurse internship program.

- Applicants must be GN's with less than 6 months of clinical experience.
- Entry salary paid at beginning nurse level (\$9/Hr.) plus 10% shift differential.
- Upon completion of the program, participants are guaranteed employment at Medical Center Hospital.

Aims of the program are to assist in the transition from nursing school to the hospital environment, plus to expand and refine assessment, evaluative and technical skills. Specialized clinical experiences will be available in critical care areas, if participants qualify.



For More Information, Contact
Karen Kincaid, RN, MSN
Coordinator of Nurse Internship Program
(214)597-0351
Ext. 4620

FINAL EXAMINATION SCHEDULE

IF CLASS MEETS AT:	DAYS:	EXAMINATION WILL BE:	IF CLASS MEETS AT:	DAYS:	EXAMINATION WILL BE:
Monday, May 7, 1984			Wednesday, May 9, 1984		
8:00	MW	8:00-10:00	9:30	MW	8:00-10:00
8:00	MWF	8:00-10:00	9:30	MWF	8:00-10:00
11:00	MW	10:30-12:30	12:30	MW	12:30- 2:30
11:00	MWF	10:30-12:30	12:30	MWF	12:30- 2:30
2:00	M	2:00- 4:00	2:00	W	2:00- 4:00
2:00	MW	2:00- 4:00	2:50	W	2:50- 4:50
2:00	MWF	2:00- 4:00	4:15	W	4:00- 5:50
2:50	M	2:50- 4:50	5:40	W	6:00- 7:50
4:15	M	4:00- 5:50	5:40	MW	6:00- 7:50
4:15	MW	4:00- 5:50	6:00	W	6:00- 7:50
5:40	M	6:00- 7:50	7:05	W	8:00- 9:50
6:00	M	6:00- 7:50	8:30	MW	8:00- 9:50
7:05	M	8:00- 9:50			
7:05	MW	8:00- 9:50			
Tuesday, May 8, 1984			Thursday, May 10, 1984		
8:00	TTh	8:00-10:00	9:30	TTh	8:00-10:00
11:00	TTh	10:30-12:30	10:00	MTH	8:00-10:00
2:00	T	2:00- 4:00	12:30	TTh	12:30- 2:30
2:00	TTh	2:00- 4:00	2:00	Th	2:00- 4:00
2:50	T	2:50- 4:50	2:50	Th	2:50- 4:50
4:15	T	4:00- 5:50	4:15	Th	4:00- 5:50
4:15	TTh	4:00- 5:50	5:40	Th	6:00- 7:50
5:40	T	6:00- 7:50	6:00	TTh	6:00- 7:50
6:00	T	6:00- 7:50	7:05	Th	8:00- 9:50
7:05	T	8:00- 9:50	8:30	TTh	8:00- 9:50
7:05	TTh	8:00- 9:50			

Times listed above are for classes scheduled in normal time periods. For classes which have different starting times, exam schedules will be announced by the faculty.

Drug abuse program acts as local treatment center

By Debora Pennington

Drug abuse. Tyler shares this problem with nearly every city in the nation, as the United States continues to spend more than \$40 billion a year on marijuana alone. However, Tyler is luckier than most of these cities because the answer is available and free of charge—the Palmer Drug Abuse Program (PDAP).

Nearly 100 teenagers and adults pass through the counselors' doors every year, some by choice, others by persuasion of friends or family, others because a judge tells them to.

Nonetheless, a helping hand is waiting to take a firm hold on anyone who desires assistance with a drug problem, whether it is their own problem, or that of a friend or relative.

"When someone comes in for help, all we require is a thirty day commitment to abstain from all drugs and alcohol and the desire to permanently abstain from them," explained counselor Steve Mistos. "More than 50 percent are successful on their first attempt."

Mistos is one of the four counselors with the program, all

of whom are former drug abusers. He is a part-time counselor who is assisted in the program by his wife, Gale, the program director and counselor; Annie Cole, a counselors' aide; and Ken Hartman, a volunteer counselor's aide.

All PDAP counselors participate in a twelve-step program, such as PDAP or Alcoholics Anonymous, for at least one year in order to become a certified counselor.

PDAP is a non-profit organization which is spiritually based, though not "religious," that recognizes tremendous power of peer group pressure.

"Most of the kids who come here do not know any sober people and we encourage them to make new friends," said Mistos.

The secret of PDAP is their constant encouragement to find alternatives to drug abuse, with fellowship, weekly meetings, parties, activities and "straight" friends to provide an on-going support, companionship and encouragement to the abuser.

"It's an alternative to single's bars," added Mistos, who recalled his own experiences where he "hit the bars" daily, not for mingling, but for the sole purpose of getting drunk. Talking to him or another counselor who has "been there" seems to be the biggest advantage for the abuser seeking help.

PDAP is available to anyone who is seeking assistance. It is a free program that is supported entirely through charitable contributions from foundations, businesses, churches, service organizations and individuals.

Joining the program is simple. PDAP works with any substance abuser and their parents from the age of twelve and up. Members are divided into groups, "for the sake of organization."

Groups are divided into 12-16, 17-24 and 25 and over, the latter being referred to as the "over the hill gang," Mistos said.

PDAP also offers a Special Peoples Program for younger members of the family whose ages range from five to 12 years

of age. This program was developed for special needs of children who live in families plagued with drug abuse.

All information concerning a member is kept confidential within the program. Counselors will meet for individual conferences along with the weekly meetings.

"We encourage members of PDAP to make as many meetings as possible," Mistos explained, "because meetings help you remember that you have friends to help you with your problem. It's too easy to stray away."

An interesting concept with the program is that they look at alcohol and drug abuse as a disease, something that cannot be overlooked or denied.

"It's easy to deny a problem," said the counselor, "but people always seek help for diseases, whether it is for themselves, a friend or a family member."

The Palmer Drug Abuse Program was founded in the summer of 1971 at Palmer Memorial Episcopal Church in Houston. The rector, Father Charles Wyatt-Brown, began working with an ex-heroin addict who, in turn, helped discourage teenagers from using drugs by sharing his story. With time, the need for a parent service became evident and the parent group was begun. The parent group is still very active in the Tyler chapter.

Mistos says the most common drugs dealt with in Tyler are alcohol, caffeine pills, diet pills, speed, heroin and opiates, but you can't categorize the problems or people who come in seeking help. Abusers in the area range from broken homes to professional people, poor, wealthy and even those from happy home situations. There are no barriers as to the types of people who are in need of PDAP's services.

Although the problem exists, it appears that Tyler has a reason to be optimistic. There is always a concerned listener and new friends waiting to help at the Tyler Palmer Drug Abuse Program.

DID YOU KNOW THAT?

1. Eighty percent of the women in Texas prisons are there on drug related charges.
2. The drug industry ranks in size with AT&T, General Motors and Exxon....It's a \$50-60 billion dollar a year industry.
3. The United States spends as much on marijuana—\$40 billion a year—as much as what is spent on imported oil.
4. The drug paraphernalia business is a \$3 billion a year industry.
5. Approximately 11 percent of the nation's high school seniors use marijuana daily.
6. Twenty-nine percent of 14-15-year-olds have tried marijuana. Forty-seven percent of 16-17-year-olds have tried marijuana. Sixty percent of 18-year-olds have tried it.
7. Five typical marijuana cigarettes have the same cancer causing capability as smoking 112 cigarettes. Marijuana has more carcinogens than tobacco tar.
8. Today's cultivated marijuana has an average potency of four percent THC, the major

psychoactive ingredient, as compared to the marijuana of the 1960's which had an average potency of .25 percent THC.

9. THC remains in the fatty tissues of every cell, especially the brain and gonads. Even a week after marijuana is smoked, 30 to 50 percent of the THC is still in the body in active form.
10. Reaction time for the motor skills, such as driving, is reduced by 41 percent after smoking a joint, by 63 after smoking two.
11. Marijuana use reduces or alters the fundamental cellular defenses against disease. White blood cell count is reduced 41 percent from normal levels with regular use of the drug.
12. THC is able to pass from an expectant mother to her unborn child. The principal male hormone, testosterone, is 44 percent below normal levels in adolescent male users.

Source: "Texan's War on Drugs Committee," by Drug Abuse Research & Education (DARE) Foundation, Inc.

Music rooms

available to all

(Continued from page 11)

of music theatre in society; Hymnology, the study of hymns and gospel song; Music in American Society, study in the role of music in America starting at the 17th century; and some rock music.

Private lessons are also taught for the piano, organ, guitar, harpsicord, clarinet, percussion and flutes. There are six pianos provided by the school, and ten guitars which are on a first-come, first-serve basis.

There are three grand pianos, one in the UC 134, one HPR 253, and the other in HPR 270. The remaining pianos are located in HPR 254, 268 and 269. A total of eight rooms are available for classes. One room, HPR 263 contains 10 electric pianos. HPR 254 contains one piano and is used for voice and choir students, HPR 263 for a regular classroom and HPR 253 for recitals. Four of the remaining eight rooms are used for private lessons and practicing.

Many activities are sponsored by the music department and all are open to the public. One upcoming event is a concert by the Choral, directed by Edwards. The Choral consists of 14 people: juniors, seniors and graduates. They come from all disciplines: music, business, elementary education and preministerial study.

There will also be a men's barbershop quartet, a soloist and several other performing groups. This is an informal concert, and all faculty and students are encouraged to go. It is a come-and-go type concert.

The music department is a great learning experience for music and non-music majors. If anyone is interested in seeing what the department is like or would like more information, it is located in the HPR building in room 272.

TIP: Something brand new for Fall Early Registration:

You can early register for the fall semester anytime during office hours between June 14, 1984 and August 10, 1984. There are two exceptions: students cannot early register for the fall semester during the regular and late registration dates for Summer II (July 5, 6 and 9). Payment can be deferred until August 17, 1984. Early registration course selections will be cancelled if payment is not received by the deadline.

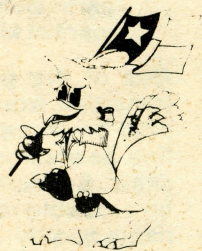
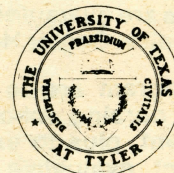
TIP: Realizing schedule changes may need to be made, we have set aside the week of August 13-17 for this purpose. Changes can be made and the deferred payment deadline of August 17, 1984, can still be met.

More in the fall schedule!

Semester Imprint Sale 20 Percent Off

All Imprinted merchandise

- * Clothing
- * Paperweights
- * Pens
- * Glassware
- * Umbrellas
- * Desk Accessories
- * Decals
- * Portfolios



UNIVERSITY BOOKSTORE

University Center at UT Tyler

3900 University Blvd.

Tyler, Texas

President George F. Hamm
and
the Faculty of
The University of Texas at Tyler
cordially invite
all graduates of 1984
to a reception
honoring
distinguished graduates.

Friday, May 11, 1984

10:30 - 11:30 a.m.

University Center
The University of Texas at Tyler

People's presidential choices are tough

country stronger but only pick the pocket of the taxpayer."

"Ronald Reagan is spending this country poor. Unless we negotiate real limitations on nuclear weapons, invest in our career military personnel and in conventional forces that really defend this nation, we will continue to slip down the slope towards nuclear war."

"The American flag does not

belong to Ronald Reagan and the right wing of the Republican Party. It belongs to all the people of this country."

Gary Hart described Walter Mondale as old-fashioned and offered himself as the best hope for the future of both the Democratic Party and the country.

"My No. 1 national priority is education," he told the crowd. "I will expand the opportunities for higher education and not shrink it

which is what the president is doing."

"We must create the best education and training system in the world, and increase student loans for those going on to colleges and universities."

Hart said, "I voted for the Senate bill which would extend the time limit on educational benefits for Vietnam Veterans." The Senator promised "True

equality for the majority of American citizens who just happen to be women through ratification of the ERA. We must surpass the advances of the 1960s and 70s to guarantee genuine civil rights for all citizens in this society."

Hart challenged Mondale to explain his energy program to Texans. "Mondale has not spelled out his national policy. My record shows I stood firmly against the wind-fall profits tax," Hart said.

He hopes western and southern states will narrow the margin between him and Mondale. Polls show Hart ahead of Mondale in California's June 5 contest for 300-plus delegates.

UT Tyler students polled after

the rally remained uncommitted.

"It was an excellent presentation. He is a good speaker and I enjoyed it," said Megan Harrell.

But history major Bruno Rumbow said, "He doesn't have the Kennedy charisma needed to overwhelm the voting public. I can see Hart as the strong candidate in 1988, carrying Mondale's old line Democratic support."

Ellen Heard questioned the ability of the rally format to honestly present a candidate. "People go to these rallies and think that the candidate will be able to do all the things he promises. He will run into the same road blocks all presidents do, namely Congress."

TOM HAYS

For

Tax Assessor/Collector SMITH COUNTY

Serving You With Eleven Years Experience

- ★ 8 Years Experience County Tax Office.
- ★ 3 Years Experience Appraisal District.
- ★ Registered Member Board of Tax Professional Examiners.
- ★ Continuing Education in Ad Valorem Taxation.

Pol. Adv. Paid By Tom Hays Campaign Fund,
P.O. Box 8689, Tyler, Texas 75711, Alan Jackson, Treasurer

WE. the undersigned, endorse the candidacy of:

TOM HAYS

for

SMITH COUNTY TAX ASSESSOR/COLLECTOR

BILL HUFF
Smith Co. Tax Assessor

JOE D. LOWRY
Former Tyler Tax Assessor

JESSE MCKAY
Lindale ISD Tax Assessor

JACK STRIPLING
Bullard ISD Tax Assessor

BARBARA SANDERS
Arp ISD Tax Assessor

DAVID E. STONE
City of Tyler Tax Assessor

GEORGE ENGLAND
Former Tyler Tax Assessor

CLYDE S. COULTER
Winona ISD Tax Assessor

DAVID S. WILSON
Tax Agent

LOUELLA JENNINGS
Chapel Hill ISD Tax Assessor

CHRISTINE OLIVER
Tyler Junior College Tax Assessor

Pol. Ad. pd for by Tom Hays Campaign Fund,
PO Box 8689, Tyler, TX 75711, Alan Jackson, Treasurer

Opportunity given for volunteer work

By Debora Pennington

Students will have a chance to work with people in their community for college credit without the basic textbook and lecture class, according to Dr. Bob Geffner, assistant professor of psychology, who is supervising the course.

Psychology 4371 is a three-hour course that is being offered during the second summer session by the psychology department to give students a chance to get "hands-on experience with other people," said Geffner.

"Students will be placed with an agency of their choice, such as the Crisis Center or the Mental Health-Mental Retardation Center," he explained. "Students can also arrange their own placement with my approval. We're flexible."

Participants will do 150 hours of volunteer work that will be arranged between the agency and the student and they will also be expected to attend meetings for class, which is usually once a week," he said.

Geffner explained that the placing is not only in the Tyler

area, but students have worked in Athens, Mineola and various other cities. There are many agencies looking for people to do this volunteer work.

Students will be able to work out their own assignments but most agencies will try to arrange for students to some peer counseling.

This course is not only for psychology students but for anyone who can use the course as an elective.

"There is no limit on the number of people who can take this course. Last year we had 20 or 25 students and I'm expecting at least that many again. Many students have already asked me if they can sign up for this course," said Geffner.

Students may start this internship at any time during the summer. It is offered twice a year with a six-hour credit maximum. It is not only for the second summer session. "Anyone who is interested in this course should contact me as soon as possible at extension 352 in the psychology department," said Geffner.

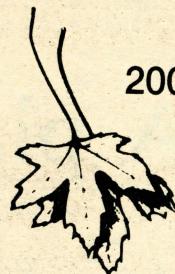
WOODCREEK

APARTMENTS

200 Muller Garden Road

561-0460

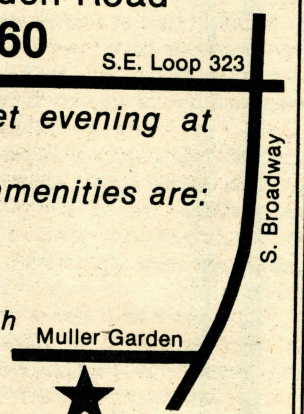
S.E. Loop 323



Enjoy a quiet evening at
Woodcreek.

For you the amenities are:

- *Pool-and-Sun area
- *Furnished Clubroom with Fireplace
- *Washer/Dryer Connections
- *Hand-laid Stone Fireplaces



Showing Mon. - Fri. 8 a.m. - 6 p.m. Sat. &
Sun. 9 a.m. - 6 p.m.

Professionally Managed by Southwest Management
System - Temple, Texas

CAM

In a class by ourselves...
we'd like you to join us!

Strawberry/Raspberry Ridge Apartments

-
- 2 Clubrooms
 - 2 Swimming Pools
 - Weight Room
 - Pool Table
 - Security Patrol
 - Basketball
 - Woodburning Fireplace
 - Private Patios
-

Models Open Daily
Monday-Friday: 9:00 - 6:00
Saturday: 10:00 - 6:00
Sunday: 12 - 6:00
Or By Appointment

A place to get away...
yet close!

2611 S.SE. Loop 323

597-2373

With This Ad - Get Half Off Deposit

Physical Plant's efforts gain recognition

By Pam Kirby

Who keeps UT Tyler running? Did you ever notice how well the campus is kept clean? Did you ever wonder who turns the lights out? These are just a few questions that the employees of the physical plant can answer.

L.J. Grubbs, director of the Physical Plant and resident engineer of UT Tyler, said that the duties of the employees of the physical plant is the overall maintenance and construction of the grounds.

Grubbs, employed with UT Tyler since 1972, was the manager of the design and construction of the buildings.

"Before, it was only native land. There wasn't anything here," Grubbs said. As manager he also had the duty of deciding where the buildings were to go on campus.

TACT elects new officers for 1984-85

The UT Tyler Chapter of the Texas Association of College Teachers (TACT) elected new officers in a meeting April 27. Dr. Allen Martin was re-elected president, Marian Rowe was elected vice president; and Dr. Lawton Bennett was elected secretary-treasurer.

Terms of office will be effective for the 1984-85 academic year.

TACT is a state-wide organization which promotes professional standards in colleges and universities, promotes academic interests in the legislature and state governments and provides its members with information concerning public policies concerning public education.

Clydell McPeak, Grubbs' assistant, does most of the drafting and redesigning of rooms. He is also in charge of all the keys of the university. Inspection of the fire extinguishers is another one of his duties.

The four major departments of the physical plant are: building, grounds, utility and custodial. Each has its own duties.

One overlooked section is the receiving and inventory department. This department receives all the goods and equipment purchased, which are then inspected and distributed.

Loyd Ellis, building maintenance supervisor, is in charge of general maintenance. The duties of this department include the setting of the air conditioner thermostats and the heaters. This department is also in charge of all walk lights located around the university, which includes changing the bulbs when they burn out. When the gas and water lines break they have to repair these also.

Other problems occur when someone changes the thermostats and opens the windows. These, Ellis said, cause the air conditioner to get out of balance.

"Our main problem is that the instructors won't turn the lights out after a class," Ellis said. He advised that the students and instructors should be aware and turn out the lights when they are not in use.

"Both students and teachers have to work together to save energy," Ellis said.

R.C. Thomas, utilities operation supervisor, handles everything in the power plant. He keeps all systems going that have to do with the heat and air

distribution.

The power plant has three 250-horse-power boilers and four 100-ton chillers. Each unit is electrically distributed. The motor control center controls the pumps, chillers, cooling towers, boiler pumps and air handlers. The power plant employees also treat the water. The water is tested and chemicals are added.

Thomas said that they have to stay up-to-date and a perfectly balanced system has to be maintained.

"Boots" Wilson, Building Services Supervisor, makes sure that all the buildings are clean and in order.

Wilson said he was called "Boots" because his father didn't like his name. The father nicknamed him "Boots" because he wore cowboy boots.

"Spring cleaning is the hardest time for us," Wilson said. They clean the school thoroughly three times a year. They do most of the cleaning during student vacations.

They clean the baseboards, desks, floors, ceilings, windows, restrooms and also take out the trash. The outside of the windows are cleaned twice a year. In addition to cleaning, the department has to set up for all school activities and functions held at UT Tyler. Wilson said there is always someone at the meetings to take care of everything that's needed.

Shampooing the carpets is one of the duties that happens less frequently. They shampoo all carpets three times a year and the University Center's carpet once a week. The wood floor in

the UC is buffed and waxed twice a year.

Wilson said, "We all do our best." He said that overall it is a pretty good job. Wilson has been employed with UT Tyler for two years. He has 21 employees that work three shifts.

Wilson said they stay pretty busy cleaning the president's office. "Housekeeping is something you never get through with," he said. "We start one day, finish and start the next."

The grounds department is supervised by Roy Moore. This department is in charge of grounds maintenance. Mowing and watering is one of their main duties. They have recently planted shrubbery and flowers around the main entrance.



GETTING PHYSICAL—Physical Plant employees are in charge of buildings and grounds maintenance. The staff includes: from left to right back row, L.J. Grubbs, Clydell McPeak, R.C. Thomas and Loyd Ellis; front row, "Boots" Wilson, Sue Willis, Reuben Phillips and James Anderson.

2202 E. Fifth
592-8960

Mr. Gatti's

The best pizza in town. *Honest!*

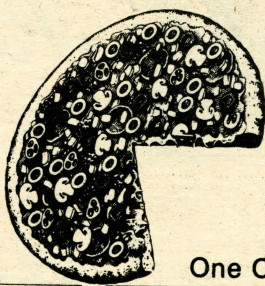
**Food
For Thought
At Gatti's.**

Apply this simple equation: Hunger is to satisfaction as pepperoni, sausage, Canadian bacon, burger, mushrooms, green

olives, onions, black olives, green peppers, jalapenos, and provolone cheese is to 4,089 different combinations. Now, what kind of fresh Gatti's pizza are you thinking about? That answer is easy, isn't it?

597-5537
Delivery

The best pizza in town. *Honest!*



FREE

2 Free 20 Oz. Glass Coca-Cola Tumblers full of Coke with the purchase of any medium or large pizza.

In Store Dining Only

One Coupon Per Visit

Expires 5-31-84

The best pizza in town. *Honest!*



FREE

Free FINGER FLINGER with the purchase of any small or individual pizza.

In Store Dining Only

One Coupon Per Visit

Expires 5-31-84

The best pizza in town. *Honest!*

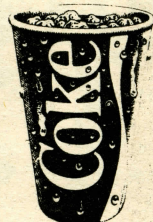


FREE

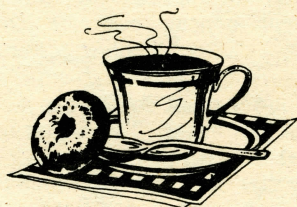
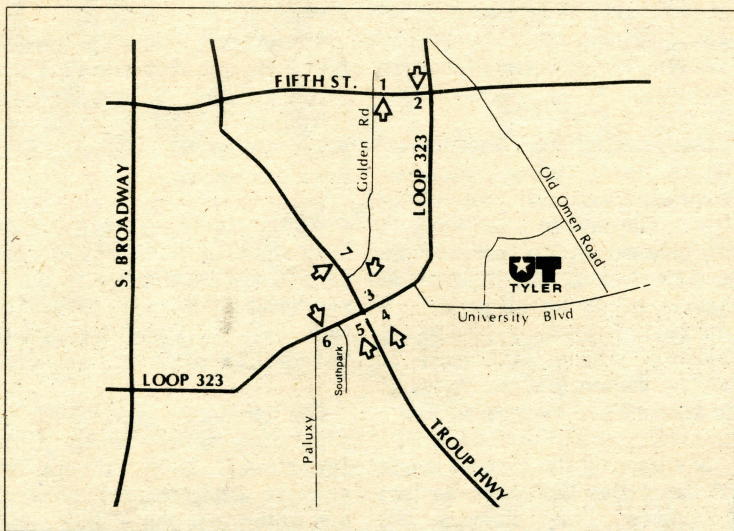
Free Liter of Coke with each medium or large pizza. **DELIVERED** or in store.

One Coupon Per Visit

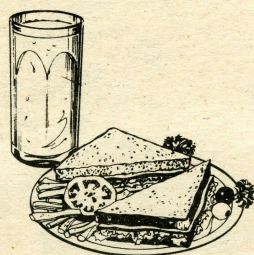
Expires 5-31-84



Congratulations Graduates of 1984!



1. Red Acker's - 2500 E. Fifth - 597-1857
2. Dairy Queen - 2611 E. Fifth - 593-8247
3. Mazzio's - 2222 E. SE. Loop 323 - 593-1818
4. Hickory Fare Bar-B-Q - 2333 E. SE. Loop 323 - 561-8881
5. Pizza Inn - 2119 E. SE. Loop 323 - 561-1455
6. Dairy Queen - 1809 E. SE. Loop 323 - 561-2972
7. Steak and Ale - 3300 Troup Hwy. - 593-2655



Family Dining Catering
Take Out

HICKORY FARE BAR-B-Q

2333 E. SE. Loop 323 Ph: 561-8881

LUNCH SPECIAL \$2.99

Get into the good of it with a trip to the salad bar and one of our delicious sandwiches or mini pizzas for only \$2.99. Come by Mazzio's Pizza for lunch today.

MAZZIO'S PIZZA
GET INTO THE THICK OF IT

2222 E. SE. Loop 323

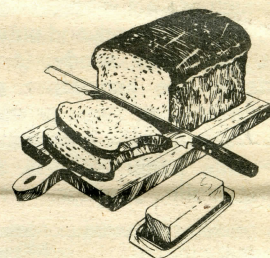
593-1818

STEAK and ALE
RESTAURANT

Now Open For Business

3300 Troup Hwy.
For Reservations Call
593-2655

Mon. - Thu.: 5 to 10:30, Fri. - Sat.: 5 to 11:30, Sun.: 5 - 10



Red Acker's

Oysters
On Half Shell

597-1857

2500 E. 5TH (HWY 64)

**SEAFOOD
& STEAKHOUSE**

Club Membership Available
Party Facilities

CLOSED MONDAYS

Tues - Thur 11:00 AM - 10:00 PM
Fri - Sat 11:00 AM - 11:00 PM
Sundays 11:00 AM - 9:00 PM

As an active member
of the business community,
Dairy Queen
supports the educational
activities of our school.

Dairy Queen

"Just keeps on getting better."

Pizza Inn
You get More of the Things you Love

Buy one large, medium or small size
Original Thin Crust pizza, get next
smallest Original Thin Crust, with
equal number of ingredients,

99¢

Present this coupon with guest check.
Not valid with any other offer.
Offer not valid for gourmet pizza.

Tuesday night buffet.
From 6:00 p.m. - 8:30 p.m.
All you can eat.

\$3.19

209 W.S.W. Loop 323
561-6012

2119 E.S.E. Loop 323
561-1455