

University of Texas at Tyler

Scholar Works at UT Tyler

The UT Tyler Patriot

Student Newspapers

11-8-1982

UT Tyler Patriot Vol. 10 no. 5

University of Texas at Tyler

Follow this and additional works at: <https://scholarworks.uttyler.edu/uttylerpatriot>

Recommended Citation

University of Texas at Tyler, "UT Tyler Patriot Vol. 10 no. 5" (1982). *The UT Tyler Patriot*. 41.
<https://scholarworks.uttyler.edu/uttylerpatriot/41>

This Book is brought to you for free and open access by the Student Newspapers at Scholar Works at UT Tyler. It has been accepted for inclusion in The UT Tyler Patriot by an authorized administrator of Scholar Works at UT Tyler. For more information, please contact tgullings@uttyler.edu.



SMILING FOR THE CAMERA -- Model, cheerleader, beauty pageant winner are all familiar roles for Tyler junior, Jannabeth McComb. (Staff photo by Ken Bryson)

"Model student" works toward variety of goals

Suzanne Norwood

There are seemingly not enough hours in the day for petite, blue-eyed blonde Jannabeth McComb while she pursues her dream of obtaining a college degree, works as a model and a cashier, performs as a semi-pro football cheerleader and participates in many church activities.

Jannabeth, 21, serves Tyler's Fair Park Baptist Church as song director for her Sunday School class, choir member and church treasurer.

A journalism major, Jannabeth graduated from Winona High School after receiving the Distinguished High School Student award. She was a member of Quill and Scroll, the honorary journalism society, served as twirler and drum major for the high school band and was FFA District Sweetheart.

Miss East Texas Steel Beauty was one title that Jannabeth received

through participation in beauty pageants. She was second runner-up in the East Texas Junior Miss Pageant, the Miss Lake of the Pines Pageant and the Miss North East Texas Pageant.

About her dreams and ambitions, Jannabeth said, "I want to be a 'working woman' in the field of public relations or journalism, and I also want to be a stewardess."

"I just want to be able to say that I have made it on my own. There are a lot of little goals that a person can have in their life before they can actually reach the big ones," she added.

"I would like to become a model, and when I say model, I mean a real 'big time' model. I know that I am too short at 5'3-1/4" to be a good, good model but I have a contract with JT's Modeling Agency now," she said.

"My most embarrassing moment happened while freeze modeling. You pretend that you are a mannequin and must stand for five or ten minutes without blinking your eyes, smiling or moving at all."

During one of these modeling sessions, a man sat down on the podium where Jannabeth was positioned, preventing her from

moving when it was necessary to do so.

"It was time to move but I couldn't because if I did move, I would step on him," Jannabeth said.

"His wife said, 'Honey, you've got to move, that girl is modeling,' and he turned around and looked at me for a long time. He said, 'Oh she ain't real, I just know she's not'."

"About that time I started moving and doing several turns. He goes, 'Oh my gosh' and jumped back, looked at me and just died laughing. I couldn't help but laugh and I did get a little embarrassed, but I guess that I was doing a good job if I really convinced someone that I was real, while supposedly looking fake."

Through her modeling, Jannabeth sees and wears many different styles of clothes.

"I love the classy look. I don't go much with fads or trends, but I do like femininity and ruffles. I also like the business look, but I think that my favorite is the classy look in clothes."

Jannabeth has been involved in dancing and twirling for seven years. She

continued Page 7

Curious about what snakes really crave?

Kay Marsh
Staff Writer

If you have ever been curious about what snakes really crave as they slither around searching for food, UT Tyler senior, Randall Dukes may be able to give you a few ideas about snake food preferences.

In July, the UT Tyler Biology Department captured a harmless, female, diamondback water snake in one of the two UT lakes. In late August, she presented the department with 30 newborn snakes for experimentation. About this same time a female broad band water snake, captured from a nearby creek, also provided the university with 14 babies.

In early September, Dukes who plans to graduate in December, used these newborn snakes to do an independent study project on what they eat for credit toward his biology degree. Dukes became interested in the experiment after taking a course in Vertebrate Natural History. Dr. Nei Ford, assistant professor of biology at UT Tyler, provided Dukes with information on how studies of this kind have been performed at other universities.

Dukes placed live frogs, crickets, worms and minnows in warm water to make extracts of their scents and used these extracts to determine if the newborn snakes had a preference for a particular

prey. He then isolated each tiny snake in a glass container surrounded by a cardboard enclosure and held a cotton swab saturated with extract in front of the snake's nose for 60 seconds. During the 60 seconds he counted the number of times the snake flicked its tongue at the scented swab.

Since a snake's sense of smell is located in its tongue, the tongue flicks were considered an accurate measure of the snake's interest in the scents of the prey. A lot of tongue flicks indicated a lot of interest.

Distilled water was used as a neutral substance on which to base the degree of

See snake, page 3.



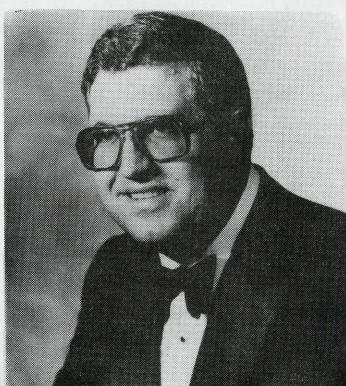
UT TYLER STUDENT--Randall Dukes, UT senior, has completed a study of diamond back water snakes found in campus lake. (Photo by Robert Sanders)

Tenor Roger Bryant gives concert

UT Tyler Student Association will present tenor Roger Bryant and pianist Robert Hunt in concert at 3 p.m., Sunday, Nov. 14, in UC 134.

Program selections include arias from Handel, Haydn, Mozart, Mendelssohn and Puccini.

Bryant is music department chairman at Ambassador College, Big Sandy, where he also teaches voice and leads the Ambassador Chorale. He



Roger Bryant

received a B.A. degree in music education and an M.A. degree in voice performance from Texas Christian University.

Hunt is minister of music at First Presbyterian Church in Richardson. He received a B.A. degree in piano at Southern Methodist University and recently completed an M.A. degree in musicology at TCU.

The public is invited.



POLITICAL FORUM--Newly elected State Representative David Hudson (left) and District Clerk Brad Burger (center) discuss the election with UT's Tommy Gilbreath, associate professor of technology.

Editorials

Strikes-----
The
American
way ?

Bill Fleisher
Staff Writer

In recent months the American public has witnessed through the news media a various and sundry labor union strikes across the country. The air traffic controllers, the railroad workers and the United Auto workers, along with others, have threatened private enterprise with walk-outs.

The air controllers gambled and lost, incurring the wrath of the Reagan administration. Many people who made less than \$35,000 a year had no sympathy. And those who regularly used air traffic were run through the gauntlet.

The UAW put the screws on the already ailing Chrysler Corporation and the railroad union boldly announced they would stop the nation's rail systems if they didn't get what they wanted.

These are strikes that grassroots America only hears in passing and isn't too concerned about, but when the baseball players and football players strike, the armchair quarterbacks begin to rise up out of the easy chair.

Sports addicts all over the country find themselves having to take their kids to the zoo on Saturday or some other horribly boring activity.

The average American has no sympathy for baseball and football jocks who get million dollar contracts, then strike so they can get more.

Let's hope that this university and other institutions of higher learning in this great country of ours will instill in this generation of college students that knowledge, experience and hard work brings promotion and increased monetary reward.

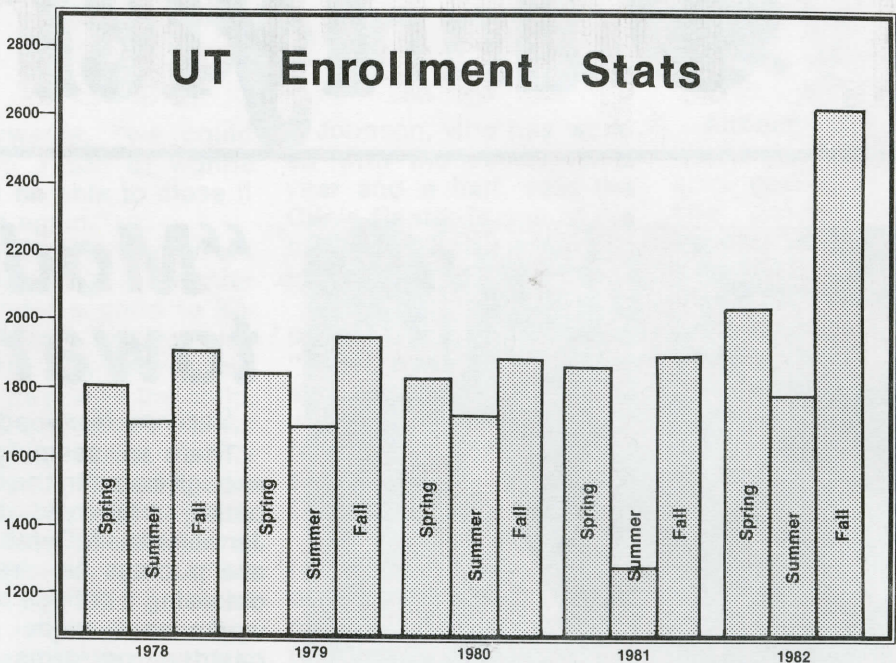
We all need to pull together to get this country on its feet again.

Sigma Tau new officers

UT Tyler technology student's Sigma Tau Epsilon Fraternity elected officers during its last meeting Oct. 28.

Elected were Martin Cheney, president, Mike Ragan and Jeff Pierce, vice presidents, Dana Vinson, secretary; Ken Redfearn, treasurer, Jim Bogue, reporter-historian, Charles Florence, parliamentarian, and Tom Lancaster, alumni secretary.

An initiation of officers is being planned.



(Chart by Kay Marsh and Ken Bryson)

Organization presidents
met with UT's Dr. Hamm

Orien Klein
Staff Writer

A convenient time for club meetings, housing and expanded parking were some of the topics discussed at a meeting between George Hamm, UT Tyler president and campus organization presidents held Oct. 26.

Dr. Hamm opened the meeting by asking the organization presidents to bring up any problems that they had found with the campus. Laurie Brantley, president of the Student Nurses Association, brought up the question of having lockers in the nursing department. Dr. Hamm said that he understood the situation and would look into it.

Music Students Association President Kris Hutson said that student organizations were finding it difficult to find convenient times to meet due to divergent student schedules. Dorothy Tucker, president of the Student Chapter of the Council for the Exceptional Children, suggested that departments establish a flexible schedule to allow their departmental organizations time to meet the greatest number of students in the course of a semester.

Miss Brantley then introduced the subject of additional parking.

After making a note of the concern, Dr. Hamm said, "I can promise you one thing, it will get worse."

Andre Hall, Student Foundation president and Phi Theta Kappa representative, asked Dr. Hamm for a status report on the housing situation. Dr. Hamm replied by listing several options including mobile housing, industrial revenue bonds, and individual contributions and contracting with private apartment owners for some units to be managed by the university.

Dr. Hamm concluded the

gathering by asking the organizations to help in recruiting new students by awarding scholarships or by word-of-mouth promotion of the university.

Present at the meeting were Dr. Hamm, Hutson, Miss Brantley; Mrs. Tucker; Patrick McGuffey, president of Phi Alpha Theta. See Presidents, page 3.

CALENDAR

TUESDAY, NOV 9

"Who, what, when, where, why family history," an introduction to genealogy by Sarah Harper, 12:30 p.m., ADM 127, co-sponsored by Tyler Public Library and UT Tyler Student Association.

WEDNESDAY, NOV 10

Continuing Education Seminar: Crisis Spanish, 6-9 p.m., UC 134, 101.

THURSDAY, NOV 11

Region VII Special Education Directors Meeting, 8:30 a.m. to 2 p.m., UC 134.

ET Council of Social Studies Meeting, 7-10 p.m., UC 101.

Alumni Association Executive Committee Meeting, 7 p.m., ADM 301.

ET Council of Teachers of English Meeting, 6-10 p.m., UC 224.

FRIDAY, NOV 12

Continuing Education Seminar: Safety, 8 a.m. to 4:30 p.m., UC 224.

SATURDAY, NOV 13

East Texas Association for the Gifted Super Saturday II, 7:45 a.m. to 4 p.m., University Center.

East Texas Crisis Center Training Program, 9 a.m.-5 p.m., ADM 364.

SUNDAY, NOV 14

Jim and Bonna Bess Vaughn Nursing Laboratory Recognition Program, 2 p.m., Open House 2-4 p.m.

Roger Bryant Concert, 3 p.m., University Center.

Tenor Roger Bryant and pianist Robert Hunt in concert, 3 p.m., UC 134, sponsored by UT Tyler Student Association.

MONDAY, NOV 15

East Texas Reading Council Reception 4-5 p.m., UC 134.

TUESDAY, NOV 16

Taunted Youth Seminar "Rubber Geometry" by Dr. Thomas A. Keagy, 9:30-11:30 a.m., ADM 127.

Student Recital, 2 p.m., UC 134.

WEDNESDAY, NOV 17

Continuing Education Seminar: Crisis Spanish, 6-9 p.m., UC 134, 101.

FRIDAY, NOV 19

Faculty Senate, 10 a.m., ADM 127.

SATURDAY, NOV 20

Basic CPR Course, 8 a.m. to 5 p.m., PHE 122.

MONDAY, NOV 22

Tyler Young Symphony Concert, 7:30 p.m., ADM 127.

UT Tyler Patriot

The U.T. Tyler Patriot is published at two-week intervals on Monday during the regular academic year, except during examination and vacation periods, in the journalism classes and laboratories of the Department of Humanities and Communication. Opinions expressed are those of student editors and do not necessarily reflect those of the student body, faculty or administration. The U.T. Tyler Patriot is printed by the U.T. Tyler Print Shop. Offices at the University of Texas at Tyler, 3900 University Boulevard, Tyler, Texas 75701, are located in HPR, Room 261, telephone (214) 566-1471, Ext. 249.

Co-EditorsRobert Sanders, Jannabeth McComb
News EditorAngie Patterson
Feature EditorJames Bynum
Classified Ad EditorDavid Bartley
PhotographerRobert Sanders, Ken Bryson
Calendar EditorJoyce Jarrel
TypesetterBecky Buford
Faculty AdviserDoris Bowman
Advisory AssistantTerry Shirley
Staff WritersJames Bynum, Brett Morman,
David Bartley, Nita Shirley, Diane Davis, Orien Klein, Angie
Patterson, Kay Marsh, Suzanne Norwood, Laura Hughes,
Richard Douglas, Joyce Jarrel, Bill Fleisher
PrinterBill Breckel

Fall fashion comes to campus



FASHION WITH A FLAIR--Jimmie Finn steps forward in leather and suede to captivate the attention of the audience.

The theme for this year's fall fashion is "take a fashion risk and win." Don't be timid, be untailored. Get your big, loose and longer-than-usual blazer, then add your favorite long skirt and be right in style.

The designers are bringing the straight lined suits and the "natty" tuxedo look out of the closet. All shapes of jackets and coats can be seen with classic trousers, or summer skirts.

Proportions are the key to this year's fall designs. Full-length coats mixed with hip-length, belted jackets over pants or tunics are the campus rage.

The sportswear look is one of sophisticated fabrics using gray, earth tone tweeds, plaids, checks, and pinstripes. Add a tie to complete a city suit look.

Fall also emphasizes the rugged look or pioneer spirit. This is accomplished by adding a quilted skirt and a patterned sweater of pure wool. The skirt is accented by the basic petticoat.

The Student Association sponsored a fall style show in the University Center. The clothes were donated by Casual Corner from the Broadway Square Mall. The models were Mary Ann Walker, Vicki Hammontree, Jimmy Finn, Nita Shiley, Kathy Carlton, Jannabeth McComb, Kay Marsh, Dana Davis, and Lou Ann Tutt.



HOUNDSTOOTH SUITS FOR FALL--Kathy Carlton wears a knitted suit that can go anywhere. Dress it up or down to fit the occasion.

Photos by Ken Bryson and Phil Hicks



FASHION LINE-UP--Wearing sophisticated designer clothes, student models wait patiently as the style show begins.



WAITING--Kay Marsh laughs as she waits with Jimmie Finn and Jannabeth McComb for the style show to begin.

Alpha Chi meets

Alpha Chi will meet at 4:00 p.m. Wednesday, Nov. 10 in HPR 135. All members are encouraged to attend this meeting.

cont. from page 2.

Presidents

historical honor society; Orien Klein, president of the UT Tyler Press Club; Jay Roberts, representing the Student Chapter of the Association for Computing Machinery; and Janet Jensen, president of the International Reading Association.

Others at the meeting were Laura Hughes, vice-president of the Student Association, DeAnn Denison, president of Beta Beta Beta; Lisa Axum, president of the Association of Psychology Students, Nancy Boatright, president of Quin Quatrus, Mary Elizabeth Dorsey, representing the Webb Historical Society; and Jerry Alexander, Director of Student Activities.

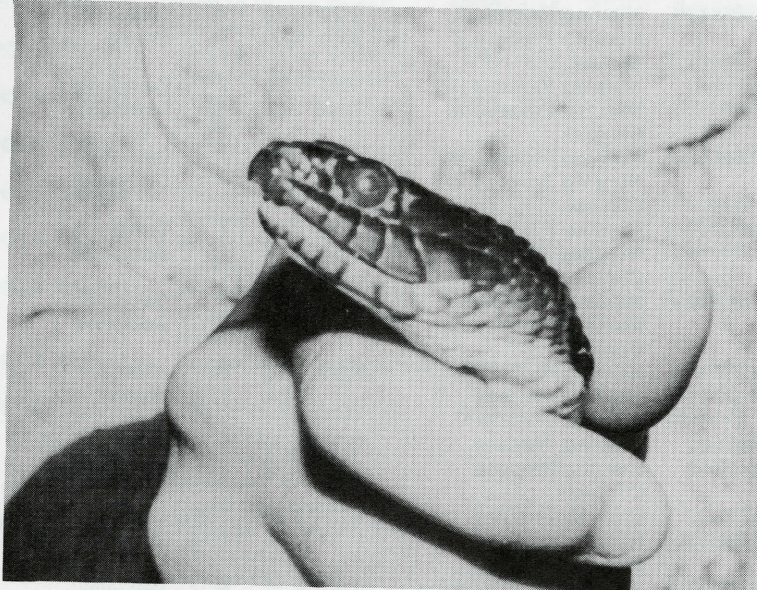
continued from Page 1

Snake

response, since it was believed the snakes would have a minimal response to the water. A new swab was introduced to the snake every 45 minutes until it had been tested with all five substances. All 44 snakes were tested in the

same manner.

Dukes' results show the broad band newborns prefer frogs over fish and crickets, but prefer distilled water to worms. The diamondback newborns prefer fish, frogs, crickets and worms, in that order, and showed little response to the distilled water.



MOTHER SNAKE--The proud mother of 40 new-born babies, this diamond back water snake makes her home in the UT Tyler laboratory.

Judging by the results of his experiments, Dukes believes the snake habitats have a lot to do with their food preferences.

He said, "The lake dweller (the diamondback water snake) would probably have access to larger fish than the creek dweller (the broad band). The creek dweller would have access to large frogs and toads than the lake dweller."

Dukes compiled a report with his finished test results which he submitted for publication to the "Occasional Papers of the Dallas Herpetological Society" on Oct. 20.

Student directories

Student directories and student activities calendars are available in the Student Activities Office, UC III, Jerry Alexander, student activities coordinator, said. Directories and calendars are free to students, faculty and staff.

Nurses plan blood drive

The Stewart Blood Center, Inc., and the UT Tyler Student Nurses Association will sponsor a blood drive Nov. 17 from 9 a.m. until 3 p.m., said Student Nurses Association President Laurie Brantley.

Brantley said that the inter-departmental competition, begun last year and won by the Department of Health and Physical Education, will be continued this year. "The department, with the greatest number of donors will win the package (the prize in the competition)."

To cheer up the students in the smaller departments, Miss Brantley added, "Donors don't have to be students. You can drag in your husband, wife, girlfriend...anyone. Just get them to sign in under your department."

The blood drive will be set up in UC 101, located on the ground floor of the University Center.

SCHOOL OF BUSINESS ADMINISTRATION

ACCOUNTING

ACCT 3300-81	Survey of Accounting	5:40- 8:20	M(N) Gordon
ACCT 3301-01	Managerial Accounting	8:00- 9:15	TTh Coplan
ACCT 3301-02	Managerial Accounting	11:00-12:15	MW Gordon
ACCT 3301-81	Managerial Accounting	5:40- 8:20	M(N) Coplan
ACCT 3311-01	Intermediate Ac- counting I	11:00-12:15	TTh Wink
ACCT 3311-81	Intermediate Ac- counting I	5:40- 8:20	Th(N) Brumlow
ACCT 3312-01	Intermediate Ac- counting II	8:00- 9:15	MW Sellers
ACCT 3312-02	Intermediate Ac- counting II	11:00-12:15	MW Sellers
ACCT 3312-03	Intermediate Ac- counting II	9:30-10:45	TTh Gordon
ACCT 3312-81	Intermediate Ac- counting II	5:40- 8:20	W(N) Gordon
ACCT 3315-81	Cost Accounting	5:40- 8:20	M(N) Sellers
ACCT 3325-81	Income Tax I	5:40- 8:20	T(N) Wink
ACCT 3326-01	Income Tax II	12:30- 1:45	TTh Wink
ACCT 3326-81	Income Tax II	5:40- 8:20	Th(N) Wink
ACCT 4320-01	Advanced Accounting	9:30-10:45	MW Coplan
ACCT 4380-01	Auditing	8:00- 9:15	TTh Brumlow
ACCT 5320-81	Accounting for Manage- ment Control	5:40- 8:20	W(N) Sellers

ECONOMICS

ECON 3301-01	Economic Analysis	9:30-10:45	TTh Kane
ECON 3301-02	Economic Analysis	2:00- 3:15	MW Hayden
ECON 3301-03	Economic Analysis	12:30- 1:45	MW Kane
ECON 3301-81	Economic Analysis	5:40- 8:20	T(N) Hayden
ECON 4310-81	Central Banking and Monetary Policy	5:40- 8:20	Th(N)Kane

FINANCE

FINA 3311-01	Financial Management	9:30-10:45	MW Kane
FINA 3311-02	Financial Management	11:00-12:15	MW Hayden
FINA 3311-03	Financial Management	11:00-12:15	TTh Dallin
FINA 3311-81	Financial Management	5:40- 8:20	W(N)Dallin
FINA 3330-81	Investments	5:40- 8:20	M(N)Meads
FINA 3390-01	Money and Capital Markets	9:30-10:45	TTh Dallin
FINA 5320-81	Advanced Financial Management	5:40- 8:20	T(N) Dallin

GENERAL BUSINESS

GENB 3300-81	Small Business Management	5:40- 8:20	T(N) Bigham
GENB 3301-01	Legal Environment & Social Responsibility	8:00- 9:15	TTh Berry
GENB 3301-02	Legal Environment & Social Responsibility	8:00- 9:15	TTh Goodwin
GENB 3301-81	Legal Environment & Social Responsibility	5:40- 8:20	T(N) Allen
GENB 3301-82	Legal Environoment & Social Responsibility	5:40- 8:20	W(N) Echols
GENB 3305-81	Business Law	5:40- 8:20	Th(N)Mason
GENB 3315-81	Personal Finance	5:40- 8:20	M(N) Williams
GENB 3321-01	Principles of Real Estate	9:30-10:45	MW Bigham
GENB 3321-81	Principles of Real Estate	5:40-8:20	M(N) Bigham
GENB 3353-01	Statistics	11:00-12:15	MW Hendrickson
GENB 3353-02	Statistics	12:30- 1:45	TTh Rainwater
GENB 3353-81	Statistics	5:40- 8:20	W(N) Campbell
GENB 3370-01	Information & Com- munication Techniques	12:30- 1:45	MW Hindsley
GENB 3370-02	Information and Com- munication Techniques	11:00-12:15	TTh Whisenhunt
GENB 3370-03	Information and Com- munication Techniques	9:30-10:45	MW Whisenhunt
GENB 3370-81	Information and Com- munication Techniques	5:40-8:20	Th(N)Hindsley
GENB 4320-01	Quantitative Decision Making	8:00- 9:15	MW Goff
GENB 4320-81	Quantitative Decision Making	5:40- 8:20	W(N) Goff
GENB 4395-01	Business Policy	9:30-10:45	MW Hewett
GENB 4395-81	Business Policy	5:40- 8:20	T(N) Hewett
GENB 5320-01	Quantitative Methods in Business	8:00- 9:15	MW Goff
GENB 5320-81	Quantitative Methods in Business	5:40- 8:20	W(N) Goff
GENB 5380-01	Management Consulting	TBA	TBA Goff
GENB 5395-01	Business Policy Formation	9:30-10:45	MW Hewett
GENB 5395-81	Business Policy Formation	5:40- 8:20	T(N) Hewett

MANAGEMENT

MANA 3311-01	Management of Organizations	11:00-12:15	MW Ussery
MANA 3311-02	Management of Organizations	9:30-10:45	TTh Ussery
MANA 3311-03	Management of Organizations	12:30- 1:45	TTh Ussery
MANA 3311-81	Management of Organizations	5:40- 8:20	T(N) Staff
MANA 3315-01	Organizational Behavior	11:00-12:15	MW Young
MANA 3315-02	Organizational Behavior	12:30- 1:45	TTh Young
MANA 3315-81	Organizational Behavior	5:40- 8:20	T(N) Pitre
MANA 3320-01	Personnel Administra- tion	9:30-10:45	TTh Gullett
MANA 3320-02	Personnel Administra- tion	9:30-10:45	MW Gullett
MANA 4305-81	Operations Management	5:40- 8:20	W(N)Hogan
MANA 4325-01	Wage & Salary Administration	11:00-12:15	TTh Gullett
MANA 4325-81	Wage & Salary Administration	5:40- 8:20	M(N)Gullett
MANA 4385-01	Organization Develop- ment	12:30- 1:45	MW Young

MARKETING

MARK 3311-01	Marketing & Society	8:00- 9:15	MW Joyce
MARK 3311-02	Marketing & Society	8:00- 9:15	TTh Joyce
MARK 3311-81	Marketing & Society	5:40- 8:20	W(N) Staff
MARK 3311-82	Marketing & Society	5:40- 8:20	Th(N)Crone
MARK 3321-81	Advertising Strategies	5:40- 8:20	Th(N)Staff
MARK 3340-01	Channel Systems & Market Structures	12:30- 1:45	MW Bigham
MARK 3350-01	Consumer Behavior	11:00-12:15	MW Joyce
MARK 4365-81	Sales Management	5:40- 8:20	Th(N) Bass
MARK 4380-81	Marketing Research	5:40- 8:20	T(N) Young
MARK 5320-81	Current Trends in Marketing	5:40- 8:20	M(N) Joyce
MARK 5380-81	Market Research & Analysis	5:40- 8:20	T(N) Young

SCHOOL OF SCIENCES AND MATHEMATICS

BIOLOGY

BIOL 3320-01	Human Physiology	8:00- 9:15	MF Ford
BIOL 3121-01	Human Physiology Laboratory	9:30-12:10	M Ford
BIOL 3121-02	Human Physiology Laboratory	9:30-12:10	F Stewart
BIOL 3328-01	Pathophysiology	11:00-12:15	MW Ford
BIOL 3328-81	Pathophysiology	4:15- 5:30	TTh(N) Ford
BIOL 3147-01	Plant Taxonomy	9:30-10:45	MW Sherrod
BIOL 3348-01	Plant Taxonomy Laboratory	2:00- 4:40	W Sherrod
BIOL 4300-01	Pathogenic Microbiology	11:00-12:15	TTh Stewart
BIOL 4101-01	Pathogenic Microbiology Laboratory	12:30- 1:45	TTh Stewart
BIOL 4115-01	Seminar	12:30- 1:45	W Ford
BIOL 4333-01	Parasitology	8:00- 9:15	TTh Killebrew
BIOL 4134-01	Parasitology Laboratory	9:30-10:45	TTh Killebrew
BIOL 4339-01	Invertebrate Zoology	12:30- 1:45	TTh Killebrew
BIOL 4140-01	Invertebrate Zoology Laboratory	2:00- 4:40	Th Killebrew
BIOL 5380-01	Selected Topics in Microbiology: Virology	11:00-12:15	MW Stewart
BIOL 5181-01	Selected Topics in Microbiology Laboratory: Virology	2:00- 4:40	W Stewart
BIOL 5396-01	Mycology	4:15- 5:30	TTh(N) Sherrod
BIOL 5197-81	Mycology Laboratory	5:40- 6:55	TTh(N) Sherrod

MEDICAL TECHNOLOGY

MEDT 4100-01	Problems in Medical Technology	8:00- 5:00	M-F Koukl
MEDT 4202-01	Morphological Techniques	8:00- 5:00	M-F Koukl
MEDT 4607-01	Clinical Microbiology	8:00- 5:00	M-F Koukl
MEDT 4611-01	Clinical Chemistry	8:00- 5:00	M-F Koukl

NURSING

NURS 3205-01	Nursing Concepts and Theories I	10:45-12:35	Th Riemen
NURS 3210-01	Nursing Process I Nursing Process I Laboratory	1:00- 1:50 2:00- 4:50	M Rowe M Rowe
NURS 3210-02	Nursing Process I Nursing Process I Laboratory	1:00- 1:50 2:00- 4:50	M Rowe M Southerland
NURS 3210-03	Nursing Process I Nursing Process I Laboratory	1:00- 1:50 4:00- 6:50	M Rowe Th Rowe
NURS 3403-01	Nursing Competencies Nursing Competencies Clinical	8:40-10:30 8:00- 2:00	Th Rowe T Rowe
NURS 3403-02	Nursing Competencies Nursing Competencies Clinical	8:40-10:30 8:00- 2:00	Th Rowe W Southerland
NURS 3401-01	Nursing Process II Nursing Process II Clinical	2:30- 4:20 8:00- 2:00	T Brown T Brown
NURS 3401-02	Nursing Process II Nursing Process II Clinical	2:30- 4:20 8:00- 2:00	W Brown W Brown
NURS 3611-01	Nursing Process III Nursing Process III Clinical	1:00- 3:50 7:00- 3:00	T Campbell Th Campbell
NURS 3611-02	Nursing Process III Nursing Process III Clinical	1:00- 3:50 1:00- 3:00	T Campbell F Campbell
NURS 3613-01	Nursing Process IV Nursing Process IV Clinical	9:00-12:00 8:00- 4:00	T Bockmon Th Bockmon
NURS 3613-02	Nursing Process IV Nursing Process IV Clinical	9:00-12:00 8:00- 4:00	T Bockmon F Bockmon
NURS 4321-01	Nursing Process	4:30- 7:20	W Munoz
NURS 4422-01	Nursing Process Clinical	TBA	TBA Munoz
NURS 4321-02	Nursing Process	8:30-11:20	M Southerland
NURS 4422-02	Nursing Process Clinical	TBA	TBA Southerland
NURS 4321-82	Nursing Process	6:00- 8:50	Th(N) Cushing
NURS 4422-82	Nursing Process: Clinical	TBA	TBA Cushing
NURS 4340-01	Leadership in Nursing	11:30- 2:20	M Cushing
NURS 4141-01	Leadership In Nursing: Clinical	TBA	M Cushing
NURS 4354-81	Research Methods in Nursing	5:00-7:50	M(N) Munoz

CHEMISTRY

CHEM 3303-01	Forensic Science I
CHEM 3107-01	Pharmacology
CHEM 3309-01	Science and Society Science and Society Laboratory
CHEM 3312-01	Instrumental Analysis
CHEM 3113-01	Instrumental Analysis Laboratory
CHEM 3344-01	Organic Chemistry II
CHEM 3145-01	Organic Chemistry II Laboratory
CHEM 4240-81	Organic Qualitative Analysis
CHEM 4241-81	Organic Qualitative Analysis Laboratory

COMPUTER SCIENCE

COSC 3302-01	PL/I Programming Applications
COSC 3308-01	Personal Computing
COSC 3308-02	Personal Computing
COSC 3311-01	Business Data Proc- essing and Computer Programming
COSC 3311-02	Business Data Proc- essing and Computer Programming
COSC 3311-81	Business Data Proc- essing and Computer Programming
COSC 3312-01	Assembly Language Programming
COSC 3322-01	Computer Organization
COSC 3350-01	RPG Applications- Programming
COSC 3365-01	Commercial Applica- tions Programming
COSC 4321-01	Data Structures
COSC 4350-01	Advanced Applications
COSC 5390-81	Topics in Computer Science: Personal Com- puting
COSC 5390-82	Topics in Computer Science: Computing Software
COSC 5390-83	Topics in Computer Science: Computer Assisted Instruction

MATHEMATICS

MATH 3310-01	Mathematical Analysis
MATH 3310-81	Mathematical Analysis
MATH 3320-01	Concepts of Modern Mathematics I
MATH 3325-01	Foundations of Mathematics
MATH 3350-01	Statistical Methods in Research
MATH 3353-01	Statistics
MATH 3353-02	Statistics
MATH 3353-81	Statistics
MATH 3365-01	Geometric Systems
MATH 3381-01	Numerical Analysis
MATH 4335-01	Introduction to Abstract Algebra
MATH 4350-81	Theory of Probability
MATH 5352-81	Mathematical Statistics
MATH 5391-81	Selected Topics in Mathematics: Geometry

SCHOOL OF LIBERAL ARTS

SOCIOLOGY

SOCI 3302-01	Deviant Behavior and its Social Impact (Same as CRIJ 3302)
SOCI 3315-01	Social Stratification
SOCI 3321-01	Multi-Cultural Studies
SOCI 3321-81	Multi-Cultural Studies
SOCI 3396-81	Social Research Methods
SOCI 4305-01	Juvenile Delinquency: Prevention and Remediation (Same as CRIJ 4305)
SOCI 4307-01	Urban Sociology
SOCI 4320-81	Introduction to Social Work
SOCI 4321-81	Methods of Social Work
SOCI 4340-01	Sex Roles and the Life Cycle
SOCI 5302-81	Seminar in Deviance
SOCI 5321-81	Intercultural Studies
SOCI 5321-82	Intercultural Studies
SOCI 5397-01	Studies in Applied Sociology

SPANISH

SPAN 3300-01	Conversation and Composition
SPAN 3360-81	Special Topics: Language and Culture for Health Personnel
SPAN 4331-81	Hispanic Culture and Civilization

ss Schedule

ART										SPEECH																
9:30-10:45	MW	Riddle	ART 3315-01	Crafts for the Elementary Teacher	2:00- 4:40	M	Stephens	SPCH 3320-01										Interpersonal and Small Group Interaction	2:00- 3:15	TTh	Sorber					
7:40- 8:30	Th	Moss						SPCH 3325-01										Persuasive Communication	9:30-10:45	TTh	Sorber					
9:30-10:20	TTh	Riddle						SPCH 4160-01										Speech Activities	TBA		Staff					
2:00- 5:00	Th	Riddle						SPCH 4331-01										Intercultural Communication	12:30- 1:45	TTh	Sorber					
11:00-12:15	MW	Riddle						SPCH 5340-81										Seminar in Intercultural Communication	7:05- 9:45	M(N)	Sorber					
2:00- 5:00	M	Riddle	ART 5310-51	Graduate Studio Problems in Drawing and Painting (Longview Museum)	4:15- 6:55	M(N)	Van Horn	SPCH 5350-81										Non-verbal Communication	7:05- 9:45	T(N)	Freeman					
9:30-10:45	TTh	McClaugherty						ART 5310-52										Graduate Studio Problems in Drawing and Painting (Longview Museum)	TBA	TBA	Coggin					
1:00- 5:00	T	McClaugherty						ART 5310-81										Graduate Studio Problems in Drawing and Painting	5:40- 6:55	Th(N)	Nunn					
5:40- 7:50	M(N)	McClaugherty						ART 5312-81										Graduate Studio Problems in Graphics and Photography	5:40- 9:45	T(N)	Van Horn					
TBA	TBA	McClaugherty						ART 5313-81										Graduate Studio Problems in Crafts	5:40- 8:20	M(N)	Stephens					
BLACK STUDIES										ENGLISH																
11:00-12:15	MW	Rainwater	HIST 4394-01	Topics in American History B. Black History (This will satisfy the core requirements for the black studies minor instead of BLST 4300).	12:30- 1:45	MW	Whisenhunt	ENGL 3310-81										Literary Appreciation	5:40- 8:20	T(N)	Staff					
2:00- 3:15	MW	Rainwater						ENGL 3335-01										American Literature Survey	11:00-12:15	TTh	Staff					
9:30-10:45	TTh	House						ENGL 3375-01										Modern Grammar	12:30- 1:45	MW	Anderson					
11:00-12:15	MW	House						ENGL 3375-81										Modern Grammar	7:05- 9:45	T(N)	Anderson					
11:00-12:15	TTh	Brodnax						ENGL 3380-01										Children's Literature	11:00-12:15	MW	Kolander					
5:40- 8:20	M(N)	Brodnax	ENGL 3390-01										Advanced Composition	12:30- 1:45	TTh	Staff										
11:00-12:15	TTh	Pittman	ENGL 4315-01										English Literature: The Neoclassical Period	2:00- 3:15	TTh	Hart										
2:00- 3:15	TTh	Pittman	SOC1 3321-01	Multi-Cultural Studies	12:30- 1:45	MW	Jedlicka	ENGL 4335-01										The English Novel	2:00- 3:15	MW	Anderson					
8:00- 9:15	TTh	Keagy						ENGL 4350-01										American Literature: The Period of Realism	11:00-12:15	MW	Smith					
12:30- 1:45	MW	Goddard						ENGL 4390-01										Creative Writing	2:00- 4:40	Th	Staff					
8:00- 9:15	MW	Keagy						ENGL 4390-81										Creative Writing	4:15- 6:55	T(N)	Staff					
9:30-10:45	MW	Goddard						ENGL 4391-81										World Literature Through the Renaissance: Classical Literature	7:05- 9:45	W(N)	Hindsley					
5:40- 8:20	M(N)	Goddard	ENGL 5315-81										Studies in the English Renaissance	5:40- 8:20	M(N)	Hart										
5:40- 8:20	T(N)	Pittman	ENGL 5325-81										Studies in Victorian Literature	5:40- 8:20	W(N)	Smith										
5:40- 8:20	M(N)	Rainwater	ENGL 5380-81										Advanced Grammar and Linguistics	5:40- 8:20	Th(N)	Anderson										
11:00-12:15	TTh	Burch	ENGL 5381-81										Children's Literature: Preschool Through Adolescence	5:40- 8:20	T(N)	Glascoc										
5:40- 8:20	M(N)	Burch	FREN 3300-81										Conversation and Composition	5:40- 6:55	MW(N)	Hindsley										
12:30- 1:45	MW	Pace	HISTORY										HIST 3376-01										Early Modern Europe	11:00-12:15	MW	Szarka
9:30-10:45	MW	Cranford	HIST 3377-01										The French Revolution and Napoleon, 1789-1815	2:00- 4:40	W	Szarka										
9:30-10:45	MW	Morris	HIST 3378-01										Nineteenth Century Europe, 1815-1914	8:00- 9:15	TTh	Gajda										
11:00-12:15	MW	Hendrickson	HIST 3395-81										Russia Since 1825	7:05- 9:45	M(N)	Gajda										
12:30- 1:45	TTh	Rainwater	HIST 4320-01										History of Texas	9:30-10:45	MW	Smyrl										
5:40- 8:20	W(N)	Campbell	HIST 4328-81										American Diplomatic History, 1898-Present	6:00- 8:40	W(N)	Falzone										
12:30- 1:45	MW	Cranford	HIST 4375-01										The New Nation: The United States, 1789-1828	9:30-10:45	TTh	Smyrl										
12:30- 1:45	TTh	Goddard	HIST 4375-02										The New Nation: The United States, 1789-1828	2:00- 4:40	M	Smyrl										
2:00- 3:15	MW	Pace	HIST 4383-01										Early Twentieth Century America, 1897-1929	8:00- 9:15	MW	Falzone										
4:00- 5:15	MW(N)	Morris	HIST 4394-01										Topics in American History B. Black History	12:30- 1:45	MW	Whisenhun										
5:40- 8:20	T(N)	Morris	HIST 4395-81										World Civilizations: Japan	6:00- 8:40	T(N)	Szarka										
5:40- 8:20	W(N)	Cranford	HIST 5320-81										Topics in State and Local History	5:40- 8:20	Th(N)	Smyrl										
8:00- 9:15	MW	Victor	HIST 5366-81										Readings in Early Modern Europe: The Reformation	6:00- 8:40	M(N)	Szarka										
11:30-12:15	MW	Martin	HONORS										HONS 4300-01										Honors Seminar Form and Human Expression	2:00- 4:40	M	Kolander
12:30- 1:45	MW	Jedlicka	JOURNALISM										JOUR 3301-81										Feature Writing	5:40- 8:20	T(N)	Robinson
6:00- 8:40	M(N)	Jedlicka	JOUR 3120-01										Publications Laboratory	2:00- 3:15	MW	Bowman										
6:00- 8:40	M(N)	Victor	JOUR 3360-01										Graphic Design and Editing	11:00-12:15	MW	Robinson										
12:30- 1:45	MW	Victor	JOUR 3395-81										Color Photography	5:40- 6:55	MW(N)	Casstevens										
9:30-10:45	TTh	Martin	JOUR 3196-81										Color Photography Laboratory	7:05- 9:45	M(N)	Casstevens										
7:05- 9:45	T(N)	Land	JOUR 4330-01										Television News Production	9:30-10:45	MW	Staff										
7:05- 9:45	W(N)	Land	JOUR 4360-01										Public Affairs Reporting	2:00- 3:15	TTh	Robinson										
11:00-12:15	TTh	Jedlicka	JOUR 4370-01										Undergraduate Internship Program	TBA		Staff										
7:05- 9:45	Th(N)	Victor	JOUR 5305-01										Theories of Mass Communication	9:30-10:45	TTh	Casstevens										
6:00- 8:40	M(N)	Martin	JOUR 5315-81										Mass Media and Popular Culture	5:40- 8:20	T(N)	Casstevens										
7:05- 9:45	T(N)	Martin	JOUR 5329-01										Topics in Mass Communication	11:00-12:15	TTh	Robinson										
1:00- 3:40	F	Jedlicka	POLITICAL SCIENCE										POLS 3300-01										United States Constitutional Development	12:30- 1:45	MW	Bennett
11:00-11:50	MTWTh	Glascoc	POLS 3300-81										United States Constitutional Development	7:05- 9:45	M(N)	Lefevre										
6:00- 8:40	T(N)	Staff	POLS 3301-01										Texas Government and Politics	8:00- 9:15	TTh	Whisenhunt										
4:15- 5:30	MW(N)	Glascoc	POLS 3301-81										Texas Government and Politics	5:40- 8:20	Th(N)	Stanley										
			POLS 3330-01										American Political Parties	11:00-12:15	TTh	Bennett										
			POLS 3340-01										Introduction to Public Administration	9:30-10:45	MW	Bennett										
			POLS 3351-01										Western Political Theory: Hobbes to the Present	11:00-12:15	MW	Lefevre										
			POLS 4321-01										American Constitutional Law	2:00- 4:40	T	Lefevre										
			POLS 4365-01										Topics in Political Science: B. Psychological Approaches to International Relations	9:30-10:45	TTh	Stanley										
			POLS 4396-01										Political Research and Methodology	12:30- 1:45	TTh	Stanley										
			POLS 5330-81										Topics in Public Administration: Finance and Budgeting	6:00- 8:40	W(N)	Bennett										
			POLS 5340-81										Topics in International Relations: Soviet Politics	6:00- 8:40	M(N)	Stanley										

MUSIC

MUSI 3316-01	History & Analysis of Music	2:00- 3:15	MW	Edwards
MUSI 3341-01	Choir	3:15- 4:05	MTWTh	Edwards
MUSI 3341-81	Choir	7:05- 9:45	T(N)	Edwards
MUSI 3355-81	Music Theatre	5:40- 8:20	Th(N)	Edwards
MUSI 4300-01	Chamber Music	2:00- 3:15	TTh	Highfill
MUSI 4350-01	Playing Guitar & Other Instruments for Social & Recreational Activities	11:00-12:15	TTh	Muckelroy

MUSIC EDUCATION

MUED 3324-01	Music Program in the Elementary School	9:30-10:45	TTh	Muckelroy
MUED 5350-51	Class Guitar	5:40- 8:20	M(N)	Rhame
MUED 5350-52	Class Guitar	5:40- 8:20	T(N)	Rhame
MUED 5312-81	Concepts of Music Education	5:40- 8:20	M(N)	Muckelroy

PHILOSOPHY

PHIL 3331-01	Modern Philosophy	2:00- 4:40	W	Krebbs
PHIL 4300-81	Topics in Philosophy: Studies in Metaphysics	5:40- 8:20	Th(N)	Krebbs

SCHOOL OF EDUCATION AND PSYCHOLOGY

ALLIED HEALTH SCIENCE

ALHS 3302-01	Diseases of Man	9:30-10:45	TTh	Sears
ALHS 3360-01	Community Health Principles	11:00-12:00	TTh	Sears
ALHS 4301-81	Allied Health Sciences Seminar	TBA	TBA	Staff
ALHS 4301-82	Allied Health Sciences Seminar	TBA	TBA	Staff
ALHS 4301-83	Allied Health Sciences Seminar	TBA	TBA	Staff
ALHS 4303-81	Emergency Health Care	5:40- 8:20	M(N)	Staff
ALHS 4305-81	Human Interactions	TBA	TBA	Staff
ALHS 4320-81	Overview of Epidemiology	TBA	TBA	Staff
ALHS 5303-81	Advanced Topics in Allied Health Science	4:15- 6:55	W(N)	Sears
ALHS 5314-81	Exercise and the Aging Process	5:40- 8:20	M(N)	Schwane
ALHS 5360-81	Topics in Health Education	5:40- 8:20	T(N)	Staff

EARLY CHILDHOOD EDUCATION

EDEC 3327-01	Survey of Early Childhood Education	3:30- 6:10	T	Staff
EDEC 3335-01	Language and Cognitive Development of Young Children	12:30- 1:45	MW	Randel
EDEC 3338-01	Teaching Science and Social Education to Young Children	12:30- 1:45	TTh	Wagner
EDEC 4338-01	Curriculum Methods and Materials for Early Childhood Education	3:30- 6:10	Th	Staff
EDEC 4352-01	Student Teaching in the Kindergarten	TBA	TBA	Martin
EDEC 5300-81	Inservice Workshop: Motor Development in Early Childhood	5:40- 8:20	T(N)	Sellers
EDEC 5302-81	Graduate Research Project in Early Childhood Education	TBA	TBA	Randel
EDEC 5335-51	Development Language Experiences for Young Children (in Longview)	4:30- 7:10	T(N)	Hicks
EDEC 5337-81	Creative Activities for the Young Child	5:40- 8:20	M(N)	Wagner
EDEC 5340-81	Seminar in Early Childhood Education	5:40- 8:20	W(N)	Wagner
EDEC 5352-81	Graduate Practicum in the Kindergarten	TBA	TBA	Staff
EDEC 5395-01	Thesis	TBA	TBA	Staff
EDEC 5396-01	Thesis	TBA	TBA	Staff

EDUCATIONAL PSYCHOLOGY

EPSY 3342-01	Educational Psychology: Development	8:00- 9:15	MW	Rodgers
EPSY 3342-02	Educational Psychology: Development	9:30-10:45	MW	Rodgers
EPSY 4343-01	Educational Psychology: Learning	8:00- 9:15	TTh	Fischer, O
EPSY 4343-02	Educational Psychology: Learning	9:30-10:45	TTh	Hubble
EPSY 4343-03	Educational Psychology: Learning	9:30-10:45	TTh	Sowell
EPSY 4343-04	Educational Psychology: Learning	11:00-12:15	TTh	Hubble

EDUCATION

EDUC 3311-01	Professional Decision Making	8:00- 9:15	MW	Randel
EDUC 3311-02	Professional Decision Making	9:30-10:45	MW	Randel
EDUC 3332-01	Generic Teaching Competencies for Elementary and Secondary Teachers I	8:00- 9:15	TTh	Fischer,C
EDUC 3372-01	Teaching Language Arts in the Elementary School	11:00-12:15	TTh	Fischer,O
EDUC 3372-02	Teaching Language Arts in the Elementary School	2:00- 3:15	TTh	Fischer,O
EDUC 3382-01	Teaching Mathematics in the Elementary School	11:00-12:15	TTh	Sowell
EDUC 3382-02	Teaching Mathematics in the Elementary School	2:00- 3:15	TTh	Sowell
EDUC 4333-81	Generic Teaching Competencies for the Elementary and Secondary Teacher II	4:15- 6:55	T(N)	Hubble
EDUC 4333-82	Generic Teaching Competencies for the Elementary and Secondary Teacher II	4:15- 6:55	T(N)	Turns
EDUC 4353-01	Student Teaching in the Elementary School	TBA	TBA	Martin
EDUC 4354-01	Student Teaching in the Elementary School	TBA	TBA	Martin
EDUC 4355-01	Student Teaching in the Secondary School	TBA	TBA	Martin
EDUC 4356-01	Student Teaching in the Secondary School	TBA	TBA	Martin
EDUC 4373-01	Teaching Social Studies in the Elementary School	12:30- 1:45	TTh	Daniels
EDUC 4373-02	Teaching Social Studies in the Elementary School	2:00- 3:15	TTh	Daniels
EDUC 4383-01	Teaching Science in the Elementary School	12:30- 1:45	TTh	Rodgers
EDUC 4383-02	Teaching Science in the Elementary School	2:00- 3:15	TTh	Rodgers
EDUC 5300-51	Inservice Workshop: Teaching Effectiveness (in Gladewater)	4:15- 6:55	M(N)	Hubble
EDUC 5300-52	Inservice Workshop: Experiential Outdoor Education (Camp Tyler)	TBA	TBA	Donaldson
EDUC 5301-81	Research Methods for the Behavioral Sciences	5:40- 8:20	W(N)	Fischer,C
EDUC 5302-81	Graduate Research Project in Curriculum & Instruction	TBA	TBA	Daniels
EDUC 5305-81	Contemporary Education	7:05- 9:45	T(N)	Turns
EDUC 5351-81	Assessment in Educational Settings	5:40- 8:20	T(N)	Sowell
EDUC 5352-81	Curriculum Development: Early Childhood-Adult Education	5:40- 8:20	W(N)	Fischer,O
EDUC 5357-81	Affective Personal Growth in Teaching	5:40- 8:20	M(N)	Cox
EDUC 5395-01	Thesis	TBA	TBA	Staff
EDUC 5396-01	Thesis	TBA	TBA	Staff

INDUSTRIAL EDUCATION

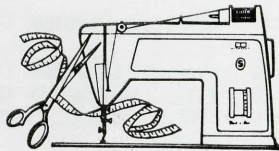
INED 3313-51	Construction Technology	7:05- 9:45	W(N)	Long
INED 3315-81	Visual Communication Technology	4:15-6:55	T(N)	Sowers
INED 3344-01	Industrial Safety	9:30-10:45	MW	Gilbreath
INED 3344-81	Industrial Safety	5:40- 6:55	TTh(N)	Robertson
INED 4301-01	Supervision	8:00- 9:15	TTh	Gilbreath
INED 4301-81	Supervision	5:40- 6:55	MW(N)	Gilbreath
INED 4301-51	Supervision	7:05- 9:45	Th(N)	Gains
INED 4302-81	Teaching Multiple Activities in Industrial Arts	7:05- 9:45	W(N)	Mayfield
INED 4303-81	Fire Loss Control	7:05- 9:45	W(N)	West
INED 4303-51	Fire Loss Control	7:05- 9:45	M(N)	West
INED 4304-81	Systems Safety Analysis	7:05- 9:45	T(N)	Propes
INED 4305-81	Industrial Distribution	7:05- 9:45	Th(N)	Kirksey
INED 4316-01	Time and Motion Study	11:00-12:15	TTh	Garrison
INED 4316-81	Time and Motion Study	8:30- 9:45	MW(N)	Garrison
INED 4323-01	Production Technology	9:30-10:45	TTh	Garrison
INED 4323-81	Production Technology	7:05- 8:20	MW(N)	Garrison
INED 4332-81	Industrial Environmental Problems	7:05- 9:45	Th(N)	Pringle
INED 4351-81	Topics in Industrial Studies: Building Cost Analysis and Estimating	7:05- 9:45	M(N)	Long
INED 5300-51	Inservice Workshop for Occupational Education: B. Trends in Industrial Training	7:05- 9:45	T(N)	Gains
INED 5301-81	History and Philosophy of Industrial Education	7:05- 9:45	T(N)	Mayfield
INED 5305-81	Seminar in Occupational Education and Technology A. Professional Development	5:40- 6:55	TTh(N)	Mayfield
INED 5305-82	Seminar in Occupational Education and Technology B. Controlling the Industrial Environment	7:05- 9:45	M(N)	Gilbreath
INED 5326-81	Planning and Development of Technical-Vocational Programs	7:05- 9:45	Th(N)	Allen

Classified

FOR SALE



1981 Honda Twinstar over 70 mpg (regular gas) 900 miles, adult owned List price \$1360. Sale price \$950. Call Mark 595-1091



Singer Golden Touch Sewing machine in cabinet \$225. Beaded lead crystal chandelier 24" long by 18" wide \$450. Call 566-0372.

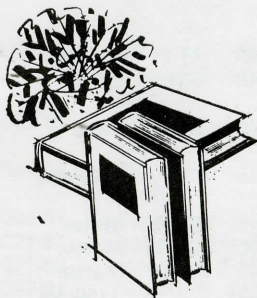
Queen size mattress and box springs. good condition \$80 Call 597-6100 or 581-1239

Early American plaid sofa and chair \$100. Gold point white washer Call ext 346, ask for Roxanne

EXPERT TYPING SERVICE



Able to type fast and accurate, Van Hout and Gentry Mrs We don, 592-6248. \$1.75 a page, 597-5012 or 561-2108 after 5:30 p.m. Charlotte George, 592-6304. Sharon, 593-9831 after 5 p.m. Alyson Bennett, 592-6165. Marilyn Terry, 593-9831 Delores Griffeth, 882-6652, Lou Ann Leonard, 593-0539. Will type term papers or other necessary papers Diane Davis, 753-8806.



TUTORING

Calculus, chemistry or general studies. Call Chris Ricks, 597-2424 after 7:30 p.m.

cont from page

Jannabeth spent many fall week-ends performing at football games as both twirler and drum major of her junior high and high school bands in Winona. Jannabeth, who graduated from Kiger Junior College in August, served as a twirler for the Ranger Band for two years.

She recently won a position on the Blazerette cheerleader squad. The Blazerettes represent the Trailblazers, the East Texas semi-pro football team which is based in Tyler and Longview.

"We have seven cheerleaders. There were two try-out sessions, and three (cheerleaders) were picked the first time. I was one of those three, and the remaining four cheerleaders were chosen during the last try-out session," Jannabeth said.

Describing the Blazerette's uniforms, she said, "The uniforms, which will be patented, are orange and white, have big sleeves and large collars. The vests at the midriff like those of the Dallas Cowboy cheerleaders. We decided to have a little skirt instead of shorts. The skirts will be orange on one side and white on the other, reversible, with orange boomerangs."

The Trailblazers are in the Northern Division of the United Football Teams of America semi-professional league and are coached by Sonnie Moore and Bob Jones. Their home games are played in Tyler or Longview.

"Our uniforms and all of our expenses for our trips will be paid for by Trailblazer owners, Carl Johnson and Mel Lewis," Jannabeth said.

Add that cheerleader activities include personal appearances that are arranged by the Blazerette choreographer, Candy Crocker Jordan.

"We hope to be in parades (the Blazerettes participated in the Tyler Rose Parade), to appear in the mall and at special functions. The more recognition you get, the better you have to be. I think it will be a lot of fun, and it will be something new and different."

To Jannabeth McComb, being different is not a new venture.

"I am a very individual person and keeping different cannot stand going with the trend or bending into the crowds in high school and even in junior college, peer pressure never put any pressure on me. I have always been different and have always tried to set an example."

(EDITOR'S NOTE: Immediately prior to publication, the Trailblazers announced that they were ceasing operations.)

KINESIOLOGY

KINE 3134-01	Biomechanics Laboratory	12:30- 1:45	MW	Sloan
KINE 3233-01	Biomechanics of Human Movement	11:00-12:15	MW	Sloan
KINE 4314-01	Prescriptive Exercise	8:00- 9:15	TTh	Schwane
KINE 4316-01	Cardio-Circulatory Stress	12:30- 1:45	TTh	Schwane
KINE 5303-81	Research Design and Statistical Analysis	7:05- 9:45	M(N)	Sloan
KINE 5307-81	Motor Learning	7:05- 9:45	W(N)	McCoy
KINE 5309-81	Advanced Motor Control	5:40- 8:20	T(N)	McCoy
KINE 5311-81	Topics in Exercise Physiology	4:15- 6:55	Th(N)	Schwane
KINE 5318-81	Strength Development	7:05- 9:45	W(N)	Sloan

HEALTH EDUCATION

HLED 4260-01	Stress/Sedentary Syndrome	9:30-10:45	MW	Schwane
HLED 4160-01	Stress/Sedentary Syndrome Laboratory	9:30-10:45	TTh	Schwane
HLED 4315-81	Nutrition in Health and Performance	4:15- 5:30	MW(N)	Sloan
HLED 4326-01	Human Sexuality	2:00- 3:15	TTh	Sears

PHYSICAL EDUCATION

PYED 3109-01	Perceptual Motor Laboratory	3:15- 5:00	TTh	Sellers
PYED 3153-01	Laboratory in Instructional Styles for the Elementary School	9:30-12:15	M	Staff
PYED 3154-01	Laboratory in Instructional Styles for the Secondary School	9:30-12:15	W	Staff
PYED 3208-01	Perceptual-Motor Diagnosis and Prescription	2:00- 3:15	TTh	Sellers
PYED 3252-01	Instructional Styles	12:30- 1:45	M	Staff
PYED 3355-01	Developmental Games and Activities	8:00- 9:15	MW	Ary
PYED 3356-01	Health and Physical Education Programming for Early Childhood and Elementary Teachers	9:30-10:45	TTh	Sellers
PYED 4153-01	Laboratory in Curriculum Construction for the Elementary School	9:30-12:15	T	Staff
PYED 4154-01	Laboratory in Curriculum Construction for the Secondary School	9:30-12:15	Th	Staff
PYED 4252-01	Curriculum Construction in School Physical Education	2:00- 3:15	MW	Staff
PYED 4337-01	Care and Prevention of Athletic Injuries	7:05- 9:45	W(N)	Gilbert
PYED 4375-01	School and Community Recreation	12:30- 1:45	MW	Ary

PSYCHOLOGY

PSYC 3232-01	Laboratory in Experimental Psychology	3:15- 4:05	MW	Goodwin
PSYC 3232-81	Laboratory in Experimental Psychology	6:05- 6:55	TTh(N)	Goodwin
PSYC 3301-01	Elements of Behavior	9:30-10:45	MW	Mitchell
PSYC 3301-81	Elements of Behavior	7:05- 9:45	M(N)	Geffner
PSYC 3311-01	Psychology of Sex Roles	12:30- 1:45	MW	Geffner
PSYC 3331-01	Experimental Psychology	2:00- 3:15	MW	Staff
PSYC 3331-81	Experimental Psychology	4:50- 6:05	TTh(N)	Staff
PSYC 3344-01	Industrial Psychology	8:00- 9:15	TTh	Fries
PSYC 3354-01	Psychological Statistics	11:00-12:15	TTh	Goodwin
PSYC 4311-01	Abnormal Psychology	12:30- 1:45	TTh	Staff
PSYC 4311-51	Abnormal Psychology	7:05- 9:45	Th(N)	Roberts
PSYC 4318-01	Physiological Psychology	9:30-10:45	TTh	Mears
PSYC 4318-81	Physiological Psychology	7:05- 9:45	W(N)	Mears
PSYC 4321-81	The History of Psychology	7:05- 9:45	T(N)	Allen
PSYC 4341-01	Personality Theories	11:00-12:15	MW	Mitchell
PSYC 4371-01	Undergraduate Internship Program	TBA	TBA	Geffner
PSYC 5313-01	Family and Marital Therapy	9:30-10:45	MW	McClure
PSYC 5314-01	Applied Counseling Therapy	TBA		McClure
PSYC 5320-81	Advanced Study in Human Growth and Development	7:05- 9:45	T(N)	McClure
PSYC 5340-81	Advanced Psychological Statistics and Design	5:40- 6:55	TTh(N)	Fisk
PSYC 5361-81	Behavior Modification	7:05- 9:45	M(N)	Staff
PSYC 5367-81	Assessment of Individual Mental Ability II	7:05- 9:45	T(N)	Fisk
PSYC 5368-81	Assessment of Personality	7:05- 9:45	Th(N)	McClure
PSYC 5380-81	Pro-seminar in Psychology: Introduction to Neuropsychological Assessment	4:15- 6:55	W(N)	Geffner
PSYC 5380-82	Pro-seminar in Psychology: Principles of Neuropsychology	4:15- 6:55	M(N)	Mears

READING

READ 4335-01	Reading: Overview and Application in the Elementary School	12:30- 1:45	TTh	Wright
READ 4338-01	Middle and Secondary School Reading	12:30- 1:45	TTh	Bryant
READ 4350-01	Pre-School and Primary Reading	2:00- 3:15	MW	Staff
READ 4360-01	Reading Materials and Methods	11:00-12:15	MW	Wright
READ 4364-01	Classroom Reading Diagnosis and Evaluation	11:00-12:15	TTh	Wright

READ 4366-01	Corrective Reading for the Classroom	3:30- 4:45	TTh	Martin
READ 4368-01	Current Issues in Secondary Reading	TBA		Staff
READ 4371-01	Secondary Reading Internship	TBA		Staff
READ 4374-01	Seminar in Reading	2:00- 4:40	W	Bryant
READ 5300-81	Inservice Workshop: ECRI	4:15- 6:55	Th(N)	Staff
READ 5360-81	Advanced Developmental Reading	5:40- 8:20	T(N)	Martin
READ 5366-01	Practicum in Reading	TBA		Staff
READ 5368-81	Organization and Supervision of Reading Programs	5:40- 8:20	T(N)	Staff
READ 5388-81	Reading in the Secondary School	5:40- 8:20	M(N)	Wright

SPECIAL EDUCATION

EDSP 4350-01	Survey of Exceptional Children	2:00- 4:40	M	Austin
EDSP 4357-01	Student Teaching in Special Education	TBA		Martin
EDSP 4362-01	Characteristics of Learners with Sensory and Intellectual Exceptionalities	11:00-12:15	MW	Elder
EDSP 4363-01	Behavioral Disorders of School Age Learners	12:30- 1:45	MW	Moseley
EDSP 4373-01	Applications of Learning Theory for Exceptional Learners	9:30-10:45	TTh	Elder
EDSP 5300-01	Inservice Workshop: Learning Disabled in the Regular Classroom	6:00- 9:20 9:00-12:00 1:00- 4:20	F(N) S S	Staff
EDSP 5352-81	Jan. 21-22; Feb. 18-19; March 18-19; April 29-30			
EDSP 5352-81	Infants and Young Children with Special Learning Needs	5:40- 8:20	Th(N)	Elder
EDSP 5357-01	Practicum in Education of Exceptional Children		TBA	Moseley
EDSP 5358-81	Teaching the Gifted in Middle and Secondary Schools	4:15- 6:55	W(N)	Bryant
EDSP 5360-81	Seminar Characteristics of Exceptional Children	5:40- 8:20	T(N)	Moseley
EDSP 5364-81	Seminar Assessment and Evaluation of Children with Special Learning Needs	4:15- 6:55	M	Moseley
EDSP 5368-81	Seminar Educational Strategies for Special Education	4:15- 6:55	Th(N)	Austin
EDSP 5370-81	Learning Theory as Applied to Exceptional Learners	5:40- 8:20	W(N)	Elder
EDSP 5378-81	Administration and Supervision of Programs in Special Education	5:40- 8:20	Th(N)	Staff

VOCATIONAL EDUCATION

EDVO 4310-01	Sponsoring Student Activity Programs	8:00- 9:15	MW	Mayfield
EDVO 4332-81	Course Construction in Technical-Vocational Programs	7:05- 9:45	M(N)	Allen
EDVO 4333-81	Human Relations for Industrial Teachers	7:05- 9:45	T(N)	Robertson
EDVO 5334-51	Organization and Coordination of the Vocational Industrial Cooperative Education Program	3:00- 5:40	W	Allen

SCHEDULE OF LATE REGISTRATION

January 18	Tuesday	8 a.m.- 6:30 p.m.
January 19	Wednesday	8 a.m. - 6:30 p.m.
January 20	Thursday	8 a.m. - 6:30 p.m.
January 21	Friday	8 a.m. - 5:00 p.m.
January 24	Monday	8 a.m. - 6:30 p.m.
January 25	Tuesday	8 a.m. - 5:00 p.m.
January 26	Wednesday	8 a.m. - 5:00 p.m.

REGISTRATION
Spring 1983
DATE: January 17, 1983
TIME: 1:30 - 6:30 p.m.
PLACE: University Center

ADVISEMENT/EARLY REGISTRATION WEEK

Nov. 29	Monday	8 a.m. - 5 p.m.
Nov. 30	Tuesday	8 a.m. - 5 p.m.
Dec. 1	Wednesday	8 a.m. - 6:30 p.m.
Dec. 2	Thursday	8 a.m. - 6:30 p.m.

Crisis Center in community

EDITOR'S NOTE. This is the second of a two-part article about the East Texas Crisis Center

The center owns a six-bedroom shelter to temporarily house abused women and their children. "We keep the shelter full," Johnson said, adding that sometimes more than six families are housed if the need arises.

She said that the Tyler Crisis Center works closely with the center in Longview. "If our shelter gets overly full, we can send women to the one in Longview or they can send them to us if theirs gets full," she explained.

When a battered woman calls in, hotline volunteers screen her to see if she is eligible for the shelter, she said. If so, a back-up counselor makes arrangements to meet the woman if she can get away from the house or wherever the violence is taking place. If not, police may be called in to help rescue the woman.

"We don't go to the house without the police," Johnson said. She explained that more policemen lose their lives handling domestic violence in-

cidents than in any other area of their jobs.

There have been many cases of abused women who have not only been abused by their husbands, but have children who have been physically and sexually abused. "Lots of times when the women come to the shelter, they are not aware of this, because they are in crisis situations themselves," she said, "and are not aware of the effects on the kids."

Johnson said that any individual who knows of a case of child abuse and does not report it is liable for the child abuse. She said it should be reported immediately to the Department of Human Resources.

Group counseling is offered each week to the women in the shelter. Johnson said it helps the women "bond together and do some of the things they need to get out of their situations."

Although counseling with the children is usually not done at the shelter, there are arts and crafts programs for them and various field trips. Johnson said if the center began counseling with the children and they left short-

ly afterwards, "we could open up a can of worms and not be able to close it back up again."

However, if a need arises for counseling, the center would refer a child to someone who could give long-term counseling and build a trust with the child.

The center offers marital counseling and a Family Preservation Program. "We don't advocate to anybody who comes to us what to do," Johnson said. "We don't tell the battered women to get a divorce or to leave their home—that's their decision," she said.

The Family Preservation Program was started specifically for families that have domestic violence problems, but want to stay together without the violence.

"When you go into the home, you can see the family dynamics a lot better than if they come into your office," she said. "And nine times out of 10 it's a breakdown in communication that's causing the majority of the problems."

Although the Crisis Center serves the three main areas of suicide, rape and domestic violence, it is also a referral service for many other types of problems. Johnson said calls are received needing information from drug and alcohol abuse to abortion.

"We don't ever turn anybody down. We deal with crises—all kinds," Johnson said. Referral lists, compiled by both the center and the Chamber of Commerce, are used by all hotline counselors.

Genealogy Discussion

"Who, What, When, Where, Why Family History," an introduction to genealogy, will be held at 12:30 p.m. Tuesday, Nov. 9, in ADM 127. Sarah Harper, genealogy librarian at the Tyler Public Library, will discuss America's No. 1 hobby.

Mrs. Harper has a B.A. degree from Brown University and a M.L.S. degree from Rutgers University. She came to the Tyler Public Library in 1972 and became head of the genealogy department in 1974.

This discussion is co-sponsored by the Tyler Public Library and the UT Tyler Student Association. The public is invited.

Tie-breaking Match

Michael Ealem defeated Thurmon Emmons 6-3, 6-2 in a tie-breaking match of the first campus tennis tournament, according to Jerry Alexander, student activities coordinator. The two players were tied for first place in the open division at the close of the tournament Oct. 16, forcing the tie-breaker.

Johnson, who has worked with the center for a year and a half, said the Crisis Center is one of the best places to get on-the-job training of this type.

"I want to be a clinical psychologist," she said, "and I don't know where else you could get the kind of access to all of the different kinds of situations except at the Crisis Center."

Johnson speaks weekly to schools and civic organizations offering public education programs to show the kinds of help the center offers. She explains the needs of the center, which is mostly funded by the community.

"When I go out and speak, it's amazing to me how many people have never heard of us," she said. "But I think we're becoming more and more well-known."

Although counseling involves a "trust" relationship, getting too close to the person receiving counseling may be destructive. "A good counselor learns how to keep emotionally distant from the people he's helping," Johnson said, "not because he doesn't care or isn't concerned, but because if he gets too emotionally involved, he ceases to be effective with them."

But working with people with problems has its benefits. "To me it's really rewarding to work with people who all of a sudden make a complete turnaround," she said.

Showing people new alternatives and opening their eyes to new ideas "makes you feel wonderful," Johnson said. "I don't think there's any greater reward than helping somebody."

News Briefs

UT Weight Clinic

The UT Tyler Department of Health and Physical Education announces the beginning of a clinic in bariatrics, or weight management.

The clinic, which includes a fitness evaluation, exercise classes, a behavior modification group, behavioral lectures, dietary recall and educational lectures, is to begin in mid-January on campus.

A typical week in the Clinic will consist of structured activity sessions on Monday, Wednesday and Friday, behavioral and educational lectures on Tuesday, and a behavior modification group on Thursday. Each class or session is one hour in length.

Participation in the clinic is open to anyone in East Texas and application is by physician referral only. Entrance into the program involves physician referral, and interview by the clinic staff, fitness and psychological testing and approval by the program director.

The class will last for 16 weeks. Interested persons should contact Mike Ary, coordinator of clinical programs, at 566-1471, ext. 323, or your personal physician.

Safety Precautions

As a safety precaution, the University Police

Department has installed floor plans in all buildings on campus which give information as to safe places to go in case of adverse weather conditions. All students, faculty and staff should become familiar with these safe areas.

In the event of adverse weather conditions the University Police will sound the siren and make announcement over the loud speaker. Should warning be given, a person should move quickly and orderly to safe areas.

Indians over Nurses

The Indians downed the Nurses 24-14 as intramural flag football continues, according to Student Activities Coordinator Jerry Alexander. Wendall Bass, Steve Brand, Kris Hutson and Scott Eyre each scored for the Indians. High scorer for the Nurses was Jill Hill with two touchdowns, including an interception return of 50 yards. Jana Jones ran for the two extra points.

The Processors also slipped by the Nurses 12-6 in a second game for both teams. Robert Tomlin and Jay Vanderberg scored TD's for the Processors. Paul Brown gained the Nurses' six points.

The league standings so far show Sigma Tau Epsilon with a 3-0 record, Indians 1-1, Processors 1-1, Business 0-1 and Nurses 0-2.



DISCOUNT CENTERS



Grumbacher ART SUPPLIES

Choose From Drawing Tablets, Paints, Oils, Brushes, Water Colors, Canvases, Pads, Library Books, Etc... Your Choice

20% off

You'll Find A Complete Line Of
Grumbacher Art Supplies In
Tyler, Palestine And Athens